



Friends of Pulpit Rock Tower, Inc.

November 1, 2013


Important Dates

Nov. 9th - Tower Open

Nov. 26th - Flatbread Night

Dear Members and Friends,

We have two terrific events coming up in November and hope that you can join us. In addition, we'd like to give you an update on our latest efforts to help restore and protect WWII Pulpit Rock Tower.

(1)  **Veterans' Day Weekend-
Public Tours- November 9, 2013.**

Friends of Pulpit Rock Tower will again be opening the Tower and giving tours of Pulpit Rock Tower to the general public in honor of Veterans' Day. The Tower will be open on **Saturday, November 9th from 10AM to 2 PM.** A \$5.00 per person/\$10 per family donation is suggested, but not required. In the event of rain, the tours will be cancelled.

At the open house, Pulpit Rock Tower will be open to the public for viewing, although the roof deck will remain closed due to safety considerations. Visitors can climb the stairs, learn about the tower's history and take in the amazing views from the observations windows. FOPRT volunteers will be on hand to answer questions, as will a representative of NH Fish and Game Dept.

Please note that the property is rough and not accessible for persons with mobility disabilities. A dirt path leads to the tower;

steep stairs and ladders must be climbed to reach the top level. Due to safety concerns, children must be 42" tall, no children may be carried shoes must be worn. (If you, or someone you know, is a disabled person, please call in advance, at 603-373-0646. FOPRT will make all reasonable accommodation to provide access or information for you during regular open house hours.)

Additional information is on our website:
<http://www.friendsofpulpitrocktower.org>

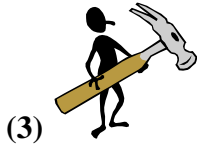
Volunteers are needed to assist the public at the open house. Please reply to this email (friendsofpulpitrocktower@hotmail.com) if you can spare a couple hours on 11/9 to help. Duties may include assisting with set up, donations, giving directions, traffic control, or guiding tours.

(2) **Community Night at Flatbread
Pizza Company- Portsmouth
Silent Auction and Fundraiser.
November 26, 2013.**



Please join us Tuesday November 26th at Flatbread Pizza Company in Portsmouth. Flatbread Pizza is generously donating a percentage from all food sold that evening to FOPRT. Take-out counts too if you cannot dine in! In addition to great pizza, FOPRT will also be holding a silent auction for some fabulous donated items. The proceeds of this night really help with our operating expenses and insurance, so please come, enjoy great food and take home some super items.

Items are needed for auction- Please donate any new merchandise, gift cards or services; they would be very much appreciated.



(3) Tower Repairs.

Roof: This summer we completed significant and desperately needed repairs to the Tower's roof. The original (1943) cracked and dried rubber membrane roof and broken railings were removed. A new, weather-tight rubber roof was installed and flashed. No more water infiltrating and weakening the concrete of tower through the roof! New safety rails were constructed to match the design of the old rails. As they needed to be replaced in-kind, they are not to present day building code but provide much needed safety at the edge of the 83' drop. In addition, the roof entrance-way dormer was repaired and painted. Our roof is now protected from water intrusion and is now safe for a very small number of careful persons to be on the roof!

Windows: Our next Project is to further close the Tower to the elements. In other words, to replace the windows. On most windows, the original wooden frames are deteriorated and glass is broken or missing. To adhere to regulations, we have to replace/replicate new windows to original specifications, which is time consuming and, as you can imagine, expensive.

Although this next step will be costly, it will ensure a relatively dry interior. With many windows missing or broken, water continues to affect the tower. The top floor, where the optical scopes were located, the wooden sub floor that we have replaced in sections due to moisture damage and again needs repair. On levels 6- 7 the wooden shelves and chairs for plotting are being affected by moisture. The new floor on the 6th floor (replaced due to the old floor containing asbestos), is starting to lift because of moisture. "Buttoning up" the tower and protecting it from the rain and snow will

help preserve the tower for future generations.



(4) Lease.

This spring and fall, the proposed lease of Pulpit Rock Tower to FOPRT made its way over significant hurdles. The proposed lease was approved by the CORD and Long Range Planning Commission of the State of New Hampshire. It has also been approved by the National Park Service. We expect the Governor and Executive Council to finalize approval soon. Many thanks to those who attended the meetings in Concord to support the lease!

The ten year lease will allow FOPRT to manage and maintain the Tower, continue opening the tower to the public periodically, make repairs, and gives FOPRT much needed time to raise the funds required by the Town of Rye before it will accept ownership of Pulpit Rock Tower. You may recall that in 2011, the voters of the Town of Rye voted to accept transfer of Pulpit Rock Tower provided a fund with at least \$120,000.00 was transferred to the Town simultaneously to be used for future maintenance and repairs.

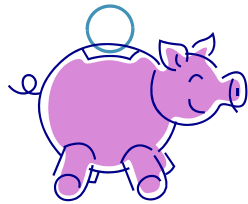


(5) Private Tours

Looking for a gift for the person who has everything? An unusual date night? Or have family visiting and you have run out of ideas of what to do? We have the answer!

Several persons have approached us regarding private tours of Pulpit Rock Tower for visiting family and friends, their club, school group or other organization. We

agree, it is a great idea, and have started offering private tours. For a tax-deductible donation between \$100-\$1000, or more, depending on the size of the group and duration, a private tour can be arranged. A director of FOPRT will guide your group through the tower, pointing out its features and history at a time and date convenient for you. You can gaze unhurried at the surrounding area from your unique vantage point and take lots of photos. Call or email us to arrange at least two weeks in advance.



(6) **Fundraising.**

We've been much busier putting our funds to work than fundraising lately. The much needed roof repairs depleted much of our reserve funds and used up the grant awarded to FOPRT by the State of New Hampshire Conservation/Heritage license plate fund. However, in order to fund repairs to the windows and other parts of the tower, to continue to open the tower to the public, and to fund a transfer to the Town of Rye, we will need to raise significant funds. Please give now to support our efforts. We have come far from the forgotten, rodent and bird infested, trash riddled tower of five years ago, to a nationally recognized historical landmark!

We are asking for your help; please help us move forward! Send your tax deductible donation to us today to the address below! Thank you!

Friends of Pulpit Rock Tower, Inc. is a tax- exempt 501(c)(3) organization.

It can be contacted at 603-373-0646 or friendsofpulpitrocktower@hotmail.com.

**Donations may be sent to:
Friends of Pulpit Rock Tower, Inc.,
26 Neptune Drive
Rye, NH 03870**

**or donate on-line at:
www.friendsofpulpitrocktower.org**