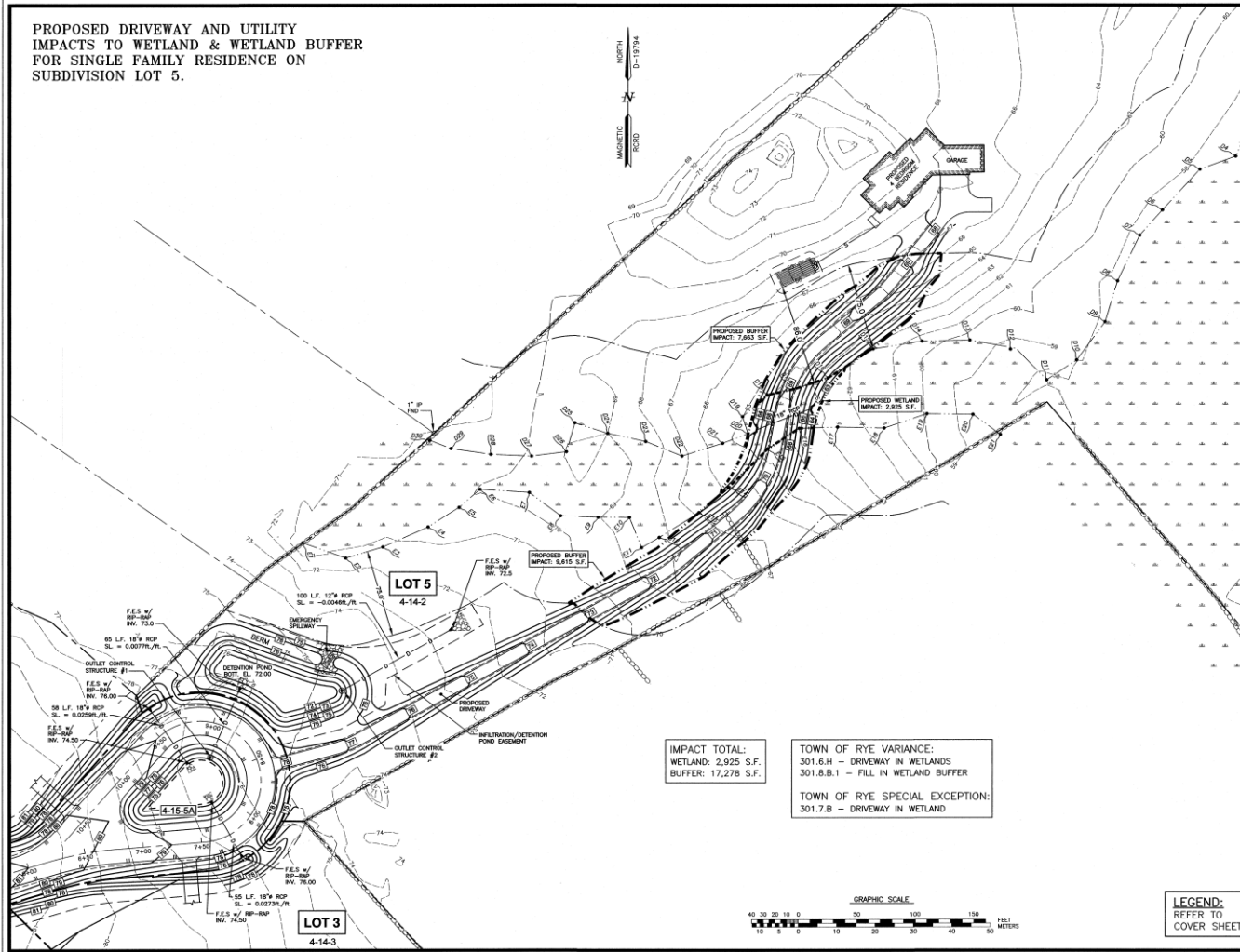


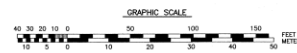
PROPOSED DRIVEWAY AND UTILITY
IMPACTS TO WETLAND & WETLAND BUFFER
FOR SINGLE FAMILY RESIDENCE ON
SUBDIVISION LOT 5.



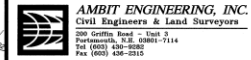
IMPACT TOTAL:
WETLAND: 2,925 S.F.
BUFFER: 17,278 S.F.

TOWN OF RYE VARIANCE:
301.6.H - DRIVEWAY IN WETLANDS
301.8.B.1 - FILL IN WETLAND BUFFER

TOWN OF RYE SPECIAL EXCEPTION:
301.7.B - DRIVEWAY IN WETLAND



LEGEND:
REFER TO
COVER SHEET



- NOTES:**
- 1) THE CONTRACTOR SHALL NOTIFY DIG SAFE AT 1-888-DIG-SAFE (1-888-344-7233) AT LEAST 72 HOURS PRIOR TO COMMENCING ANY EXCAVATION ON PUBLIC OR PRIVATE PROPERTY.
 - 2) UNDERGROUND UTILITY LOCATIONS ARE BASED UPON BEST AVAILABLE EVIDENCE AND ARE NOT FIELD VERIFIED. LOCATING AND PROTECTING ANY ABOVEGROUND OR UNDERGROUND UTILITIES IS THE SOLE RESPONSIBILITY OF THE CONTRACTOR AND/OR THE OWNER. UTILITY CONFLICTS SHOULD BE REPORTED AT ONCE TO THE DESIGN ENGINEER.
 - 3) CONTRACTOR SHALL INSTALL AND MAINTAIN EROSION CONTROL MEASURES IN ACCORDANCE WITH THE "NEW HAMPSHIRE STORMWATER MANUAL, VOLUME 3, EROSION AND SEDIMENT CONTROLS DURING CONSTRUCTION" (NHDDES DECEMBER 2008).
 - 4) DATUM: MEAN SEA LEVEL - NAD 1983
ACCURACY COMPLIES WITH RYE LDR 401.2
 - 5) WETLANDS WERE DELINEATED BY GOWE ENVIRONMENTAL SERVICES ON 6/9/14. FLAGS WERE FIELD LOCATED BY AMBIT ENGINEERING, INC. DELINEATION WAS IN ACCORDANCE WITH THE 1987 CORPS OF ENGINEERS WETLANDS DELINEATION MANUAL AS REQUIRED BY THE DES WETLANDS BUREAU. JURISDICTIONAL WETLANDS WERE IDENTIFIED AND DELINEATED USING THE ROUTINE DETERMINATIONS METHOD AS OUTLINED IN THE MANUAL. THE WETLANDS DELINEATED ON THE ABOVE REFERENCED SITE ALSO MEET THE CRITERION OF POORLY DRAINED AS DEFINED IN ISSUING SPECIAL PUBLICATION NO. 1 "HIGH INTENSITY SOIL MAP FOR NEW HAMPSHIRE STANDARDS" DATED JANUARY 1994.
 - 6) HOUSE AND SEPTIC LOCATIONS ARE CONCEPTUAL AND SUBJECT TO CHANGE.
 - 7) WATER AND ELECTRIC SERVICES WILL BE PLACED IN THE DRIVEWAY CORRIDOR.

PROPOSED SUBDIVISION
D.D. COOK BUILDERS
561 SOUTH ROAD
RYE, N.H.

NO.	DESCRIPTION	DATE
0	ISSUED FOR COMMENT	11/11/14
	REVISIONS	

SCALE: 1" = 40' OCTOBER 2014

VARIANCE APPLICATION
PLAN

V1