

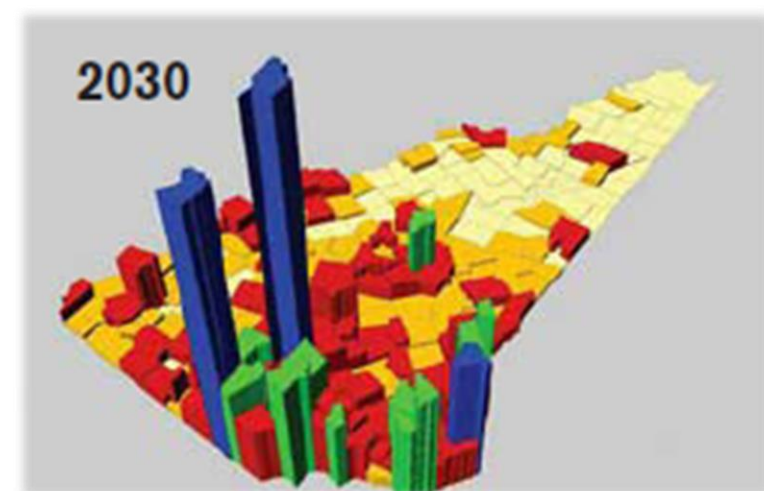
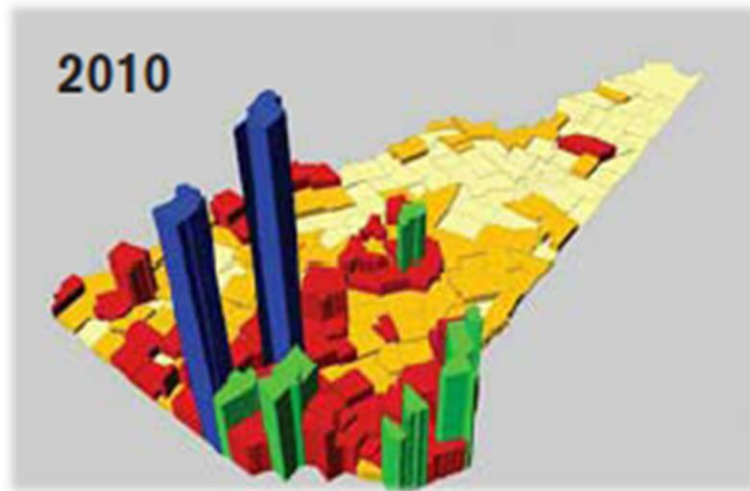
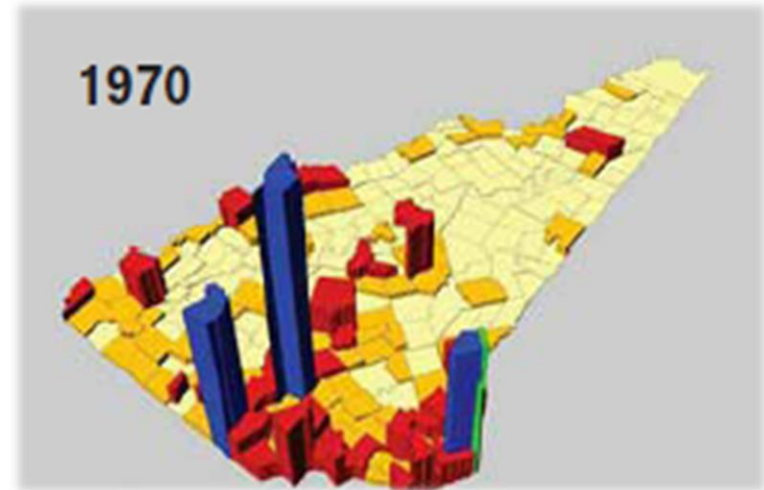
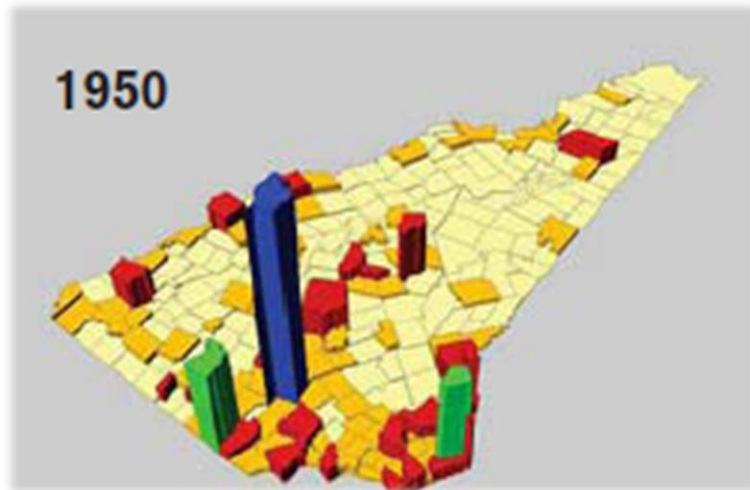
These are a few slides from a
presentation given by:

Thomas S. Burack, Commissioner New Hampshire
Department of Environmental Services

to: Leadership NH Class of 2017

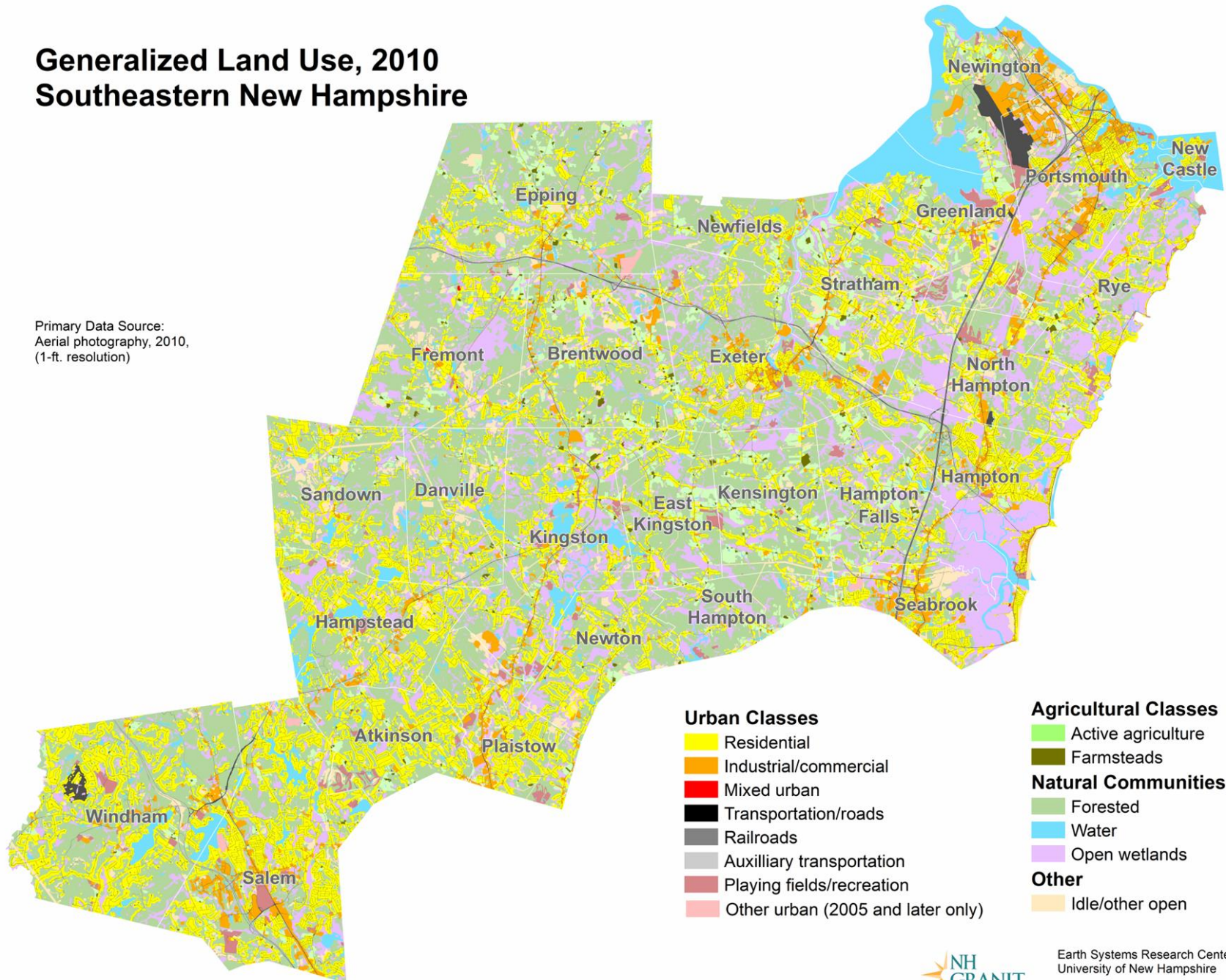
Challenge #2: Development is Spreading out

(Pop. Density (1950 to 2030))



Generalized Land Use, 2010 Southeastern New Hampshire

Primary Data Source:
Aerial photography, 2010,
(1-ft. resolution)



Urban Classes

- Residential
- Industrial/commercial
- Mixed urban
- Transportation/roads
- Railroads
- Auxilliary transportation
- Playing fields/recreation
- Other urban (2005 and later only)

Agricultural Classes

- Active agriculture
- Farmsteads

Natural Communities

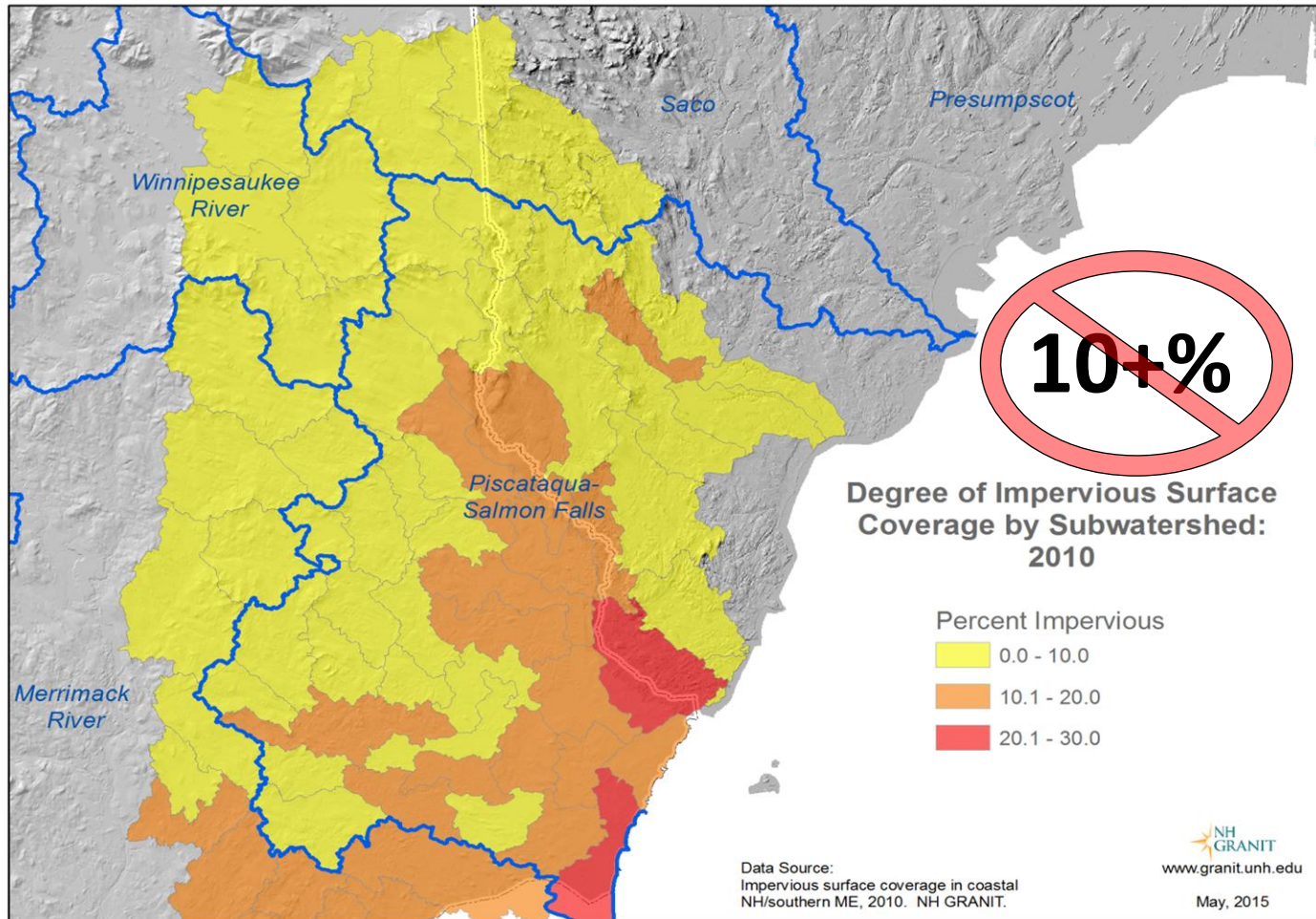
- Forested
- Water
- Open wetlands

Other

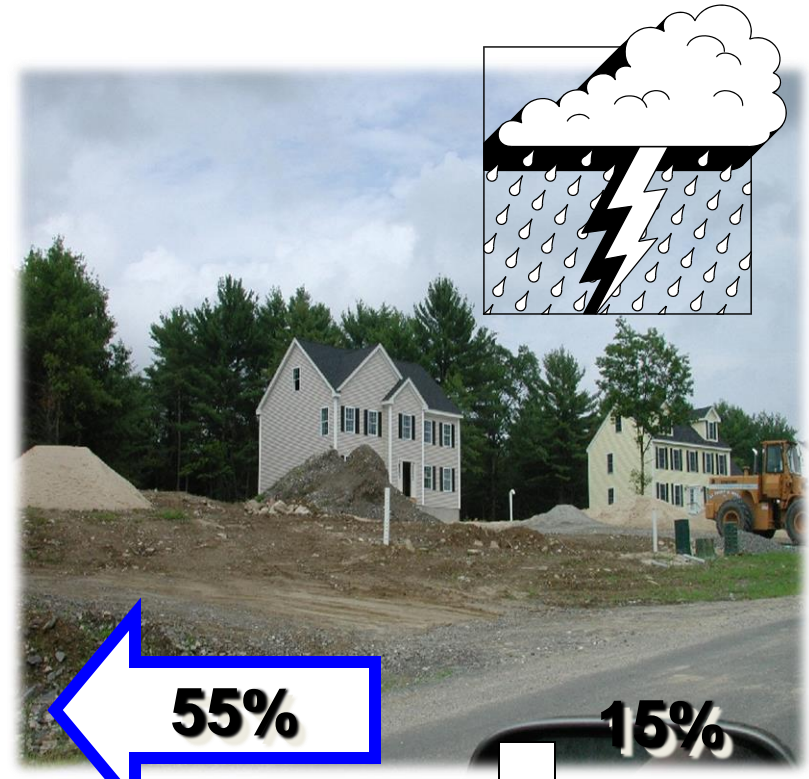
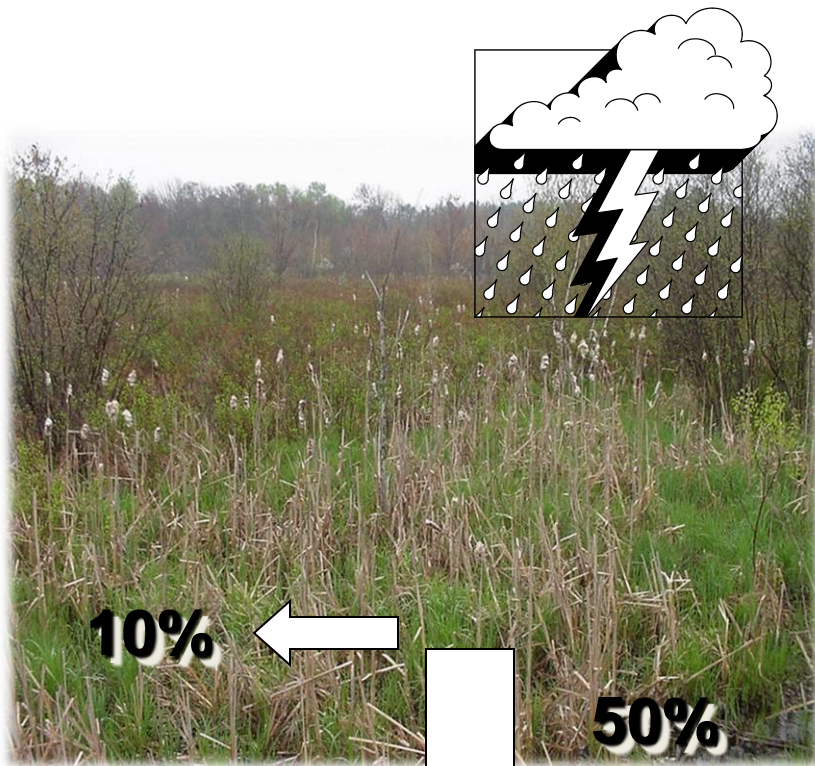
- Idle/other open



Impervious Surfaces Increase Water Quality Problems



More Developed Land = More Stormwater Runoff



Stormwater runoff contributes to **82%** of water quality impairments in NH!

Environmental Dashboard



Topic	Indicator	Current Condition	Trend
Air Pollution	Ozone	Currently, 100% of the state is meeting the 2008 ozone National Ambient Air Quality Standard.	
	Particulates	Currently, 100% of the state is meeting the 2006 fine particle National Ambient Air Quality Standard.	
Coastal Waters	Shellfish Harvesting	In 2013, the percentages of acre-days available for harvesting shellfish in the following areas were: Little Harbor, 25%; Great Bay, 77%; Hampton/Seabrook Harbor, 58%; and Bellamy River, 18%.	
	Eelgrass	Data indicate a long-term decline in eelgrass since 1996 that is not related to wasting disease. Due to variability even recent gains of new eelgrass still indicate an overall declining trend.	
	Nitrogen Concentration	Between 1974 and 2011, data indicate a significant overall increasing trend for dissolved inorganic nitrogen (DIN) at Adams Point, which is of concern. When examining variability at other monitoring stations with shorter periods of data, no consistent patterns can be found. Recent data considered in the context of long-term data show no pattern or trend.	
Contaminated Property	Sites Cleaned Up	As of 2013, of the 8,232 contaminated properties discovered since the 1980s, 80% have been cleaned up, leaving 1,649 sites, or 20%, still in the process of being cleaned up.	
Drinking Water	Groundwater Protection	As of 2012, 90 municipalities, or less than 40% of the state's municipalities, have adopted zoning ordinances to protect groundwater or aquifers from contamination.	
	Public Water Systems	85% percent of public community water systems currently meet all regulated health-based standards.	
	Private Wells	It is estimated that 20% of private drinking water wells exceed the federal safe level for arsenic; 55% exceed DES's recommended levels for radon.	

Environmental Dashboard



Lakes/Ponds & Rivers/Streams	Aquatic Life	Approximately 73% of rivers present ideal conditions for aquatic life.	
		Approximately 4% of lakes present ideal conditions for aquatic life.	
	Beach Advisories	DES issued 68 beach advisories in 2012; fewer advisories than in the three previous summers. On any day at any beach, the chance of an advisory being in effect is never more than 2.3%	
	Lake Water Clarity, Algal Growth & Nutrients	The clarity of our lake water has significantly deteriorated since 1985, on average by 1% per year. Lake nutrients levels have increased and algal growth has remained relatively unchanged.	
	Exotic Plant Infestations	There are currently 89 known exotic aquatic plant infestations in 69 lakes/ponds and 11 rivers statewide.	
Waste Management	Generation, Recycling & Disposal	Currently, 10% of New Hampshire's solid waste is exported; 29% is recycled or composted; 27% is incinerated for purposes of energy recovery; and 34% is sent to landfills.	
Water Availability	Stream Flows	During the 12 months of July 2011 to June 2012, stream flow conditions statewide exhibited extreme values, illustrating both the difficulty in forecasting rain events and the necessity of monitoring flows.	
Wetlands	Wetlands Loss & Mitigation	Over the past five years, current wetlands loss has averaged 59 acres per year; however, more than 28,000 acres have been protected through wetland mitigation and conservation since 1997.	

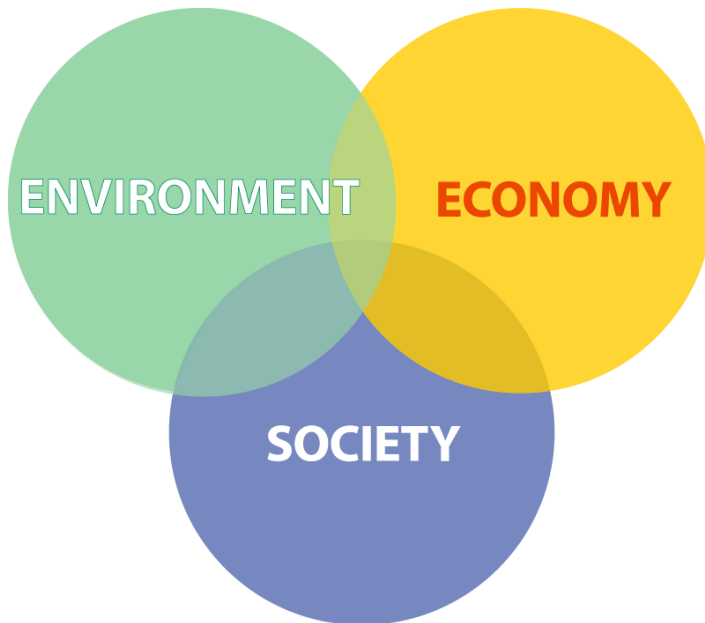
**A Strong Economy and a Healthy
Environment go Hand in Hand ...**

**“The economy is a wholly-
owned subsidiary of the
environment.”**

Former US Senator Gaylord Nelson

Views of Community

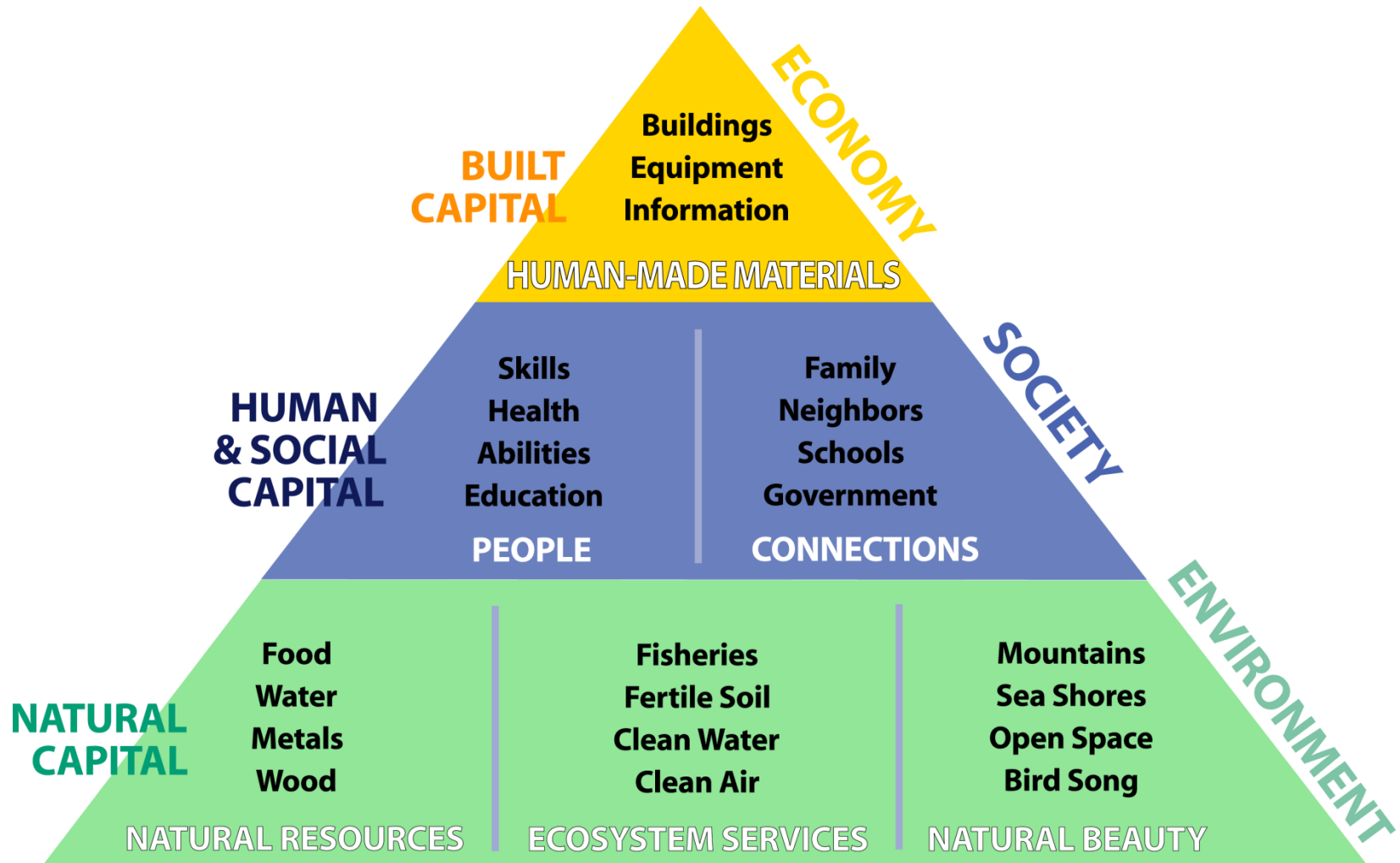
Traditional View



Sustainable View



Community Capital



Take the Long View...



What will happen if...

- we consider both the expected and the unanticipated consequences before we take action;
- we place sustainability at the heart of our decision-making processes; and
- we all work together to address today's (and tomorrow's) challenges.

Contact Information

**Thomas S. Burack
Commissioner**

New Hampshire Department of Environmental Services

P.O. Box 95, 29 Hazen Drive

Concord, NH 03302-0095

(603) 271-3449

Thomas.Burack@des.nh.gov

www.des.nh.gov

Questions?

