



Help us keep you **safe**.

If a tree branch breaks off and lands on a power line, don't touch the branch or wire. Call Eversource immediately at **1-800-662-7764**.

- Don't cut down trees or branches near power lines yourself. Have it done by trained professionals or call Eversource.
- Stay clear of power lines when removing any object caught in a tree.
- No one should climb trees that are anywhere near power lines. Be sure that children understand this.
- Before you plant a tree, make sure it won't grow too close to overhead power lines when it matures.

Remember, the electric lines running from the utility pole to your house are energized and can be dangerous. Don't go near these lines or attempt to prune trees or branches around them!

If you have any questions or would like more information, you can always call Eversource at **1-800-662-7764**, or visit us on the web at Eversource.com.

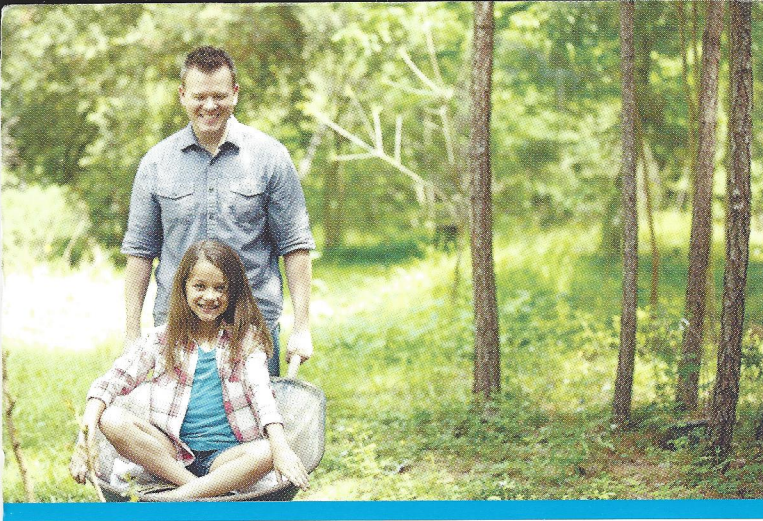
EVERSOURCE



To improve service, Eversource is
**Pruning Trees in
your neighborhood.**



EVERSOURCE



You can help.

Regular tree pruning helps to prevent power outages and means less safety hazards for you.

Put some things together and they just don't mix. Take trees and power lines. They can live mere feet from each other in perfect harmony. But when they touch, it can cause everything from power outages, fires, and downed lines, to safety hazards for people, wildlife, and even the trees themselves.

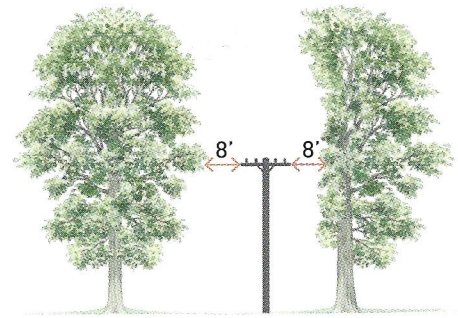
To help keep power lines safe, Eversource has trees pruned on a regular, rotating schedule. During this time, branches are cleared or certain trees are removed from around power lines before they have a chance to damage property, cause outages, or compromise safety.

Before this work is performed, your consent is needed.

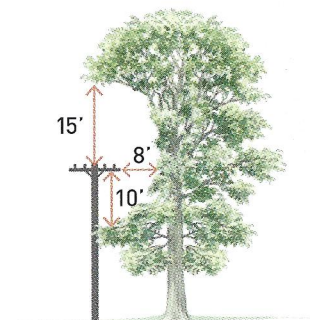
To help ensure public safety and minimize power outages in your neighborhood, Eversource has hired a professional tree pruning company to prune the trees and brush in your area. Pruning is one of the most important means of maintaining and improving tree health and doesn't harm trees when proper arboricultural techniques are followed.

And because keeping power lines safe is our responsibility, there is no cost to you. However, before starting work, our contractor requests your consent.

When the tree pruning company arrives, they will prune to create the following minimum safe distances between the electrical lines and the surrounding trees:



Any limb extending within 8 feet of the electrical line will be cut back. Because proper pruning requires cutting at certain points, branches will be cut at a main branching point, or at the trunk, leaving no stub. Sometimes this may mean the branch is cut more than 8 feet from the wires, but it helps preserve the health of the tree. Trees 16 inches in diameter or less at chest height located less than 8 feet from the nearest wire may be removed.



Any limb above the wire to a height of 15 feet will be removed.

Certain main branches on older trees can remain inside of the minimum clearance, but this depends on the health of the tree, direction of growth and likelihood of its limbs reaching the wires.

Species located under the line and recognized as fast growing will be removed. Slower growing species will be left if they have a minimum of 10 feet of clearance to the nearest primary conductor.

tear along dotted line

Giving consent is **easy**.

Please read through this brochure and fill out the consent form to the right. Tear along the green dotted line. Moisten glue, fold in half, seal and mail this postage-paid card.

Your response is **important**.

For those who don't respond promptly, a contractor representative may call to get your consent before work begins. If you do not respond within 45 days, you are presumed to have consented.

Nick at Lewis Tree Service
Please read, fill out and return card promptly
If you'd like consult, I'll contact to schedule
Thank you

ZH

Please check the following:

- Yes!**
Your contractor has my consent to prune or remove trees to minimize outages and maintain required clearance at power lines.
- I request a personal consultation before pruning begins.**
Phone: _____ Best time to call: _____
- Yes! Please remove the wood.**
- I do own this property. (Please sign and date below)** **I don't own this property. (Please identify property owner below)**

Name: _____ Phone: _____
 Address: _____
 Signature and Date: _____

Please cut this card on the green dotted line. Then moisten glue, fold in half, seal and mail this postage-paid card.



NO POSTAGE
NECESSARY
IF MAILED
IN THE
UNITED STATES

BUSINESS REPLY MAIL
FIRST-CLASS MAIL PERMIT NO. 1027 MANCHESTER, NH

POSTAGE WILL BE PAID BY ADDRESSEE

EVERSOURCE
VEGETATION MANAGEMENT
PO BOX 330
MANCHESTER NH 03105-9989



Slow growing trees are **pruned**.
Fast growing trees are **removed**.

Because some trees grow quite rapidly, they pose a constant danger around power lines. To eliminate this danger, the trees must be removed.

Slow growing trees include:

Cedar, Hemlock, Hickory, Norway Maple, Oak, Sugar Maple, and certain other species.

Fast growing trees include:

Ash, Birch, Cherry, Pine, Poplar, Red Maple, Silver Maple, Willow, and certain other species.

Pruning pole-to-house lines

Eversource only prunes the line attached from your home to the pole on the street when trees or branches are directly in contact with the wires. Professional tree pruning contractors can be hired by customers for pruning work near these lines.

Eversource may de-energize pole-to-house lines for professional tree contractors so they can prune trees safely. Please call Eversource at **1-800-662-7764** for more information.

