

November 6, 2018

Driftwood

Rye, NH

1 inch = 200 Feet



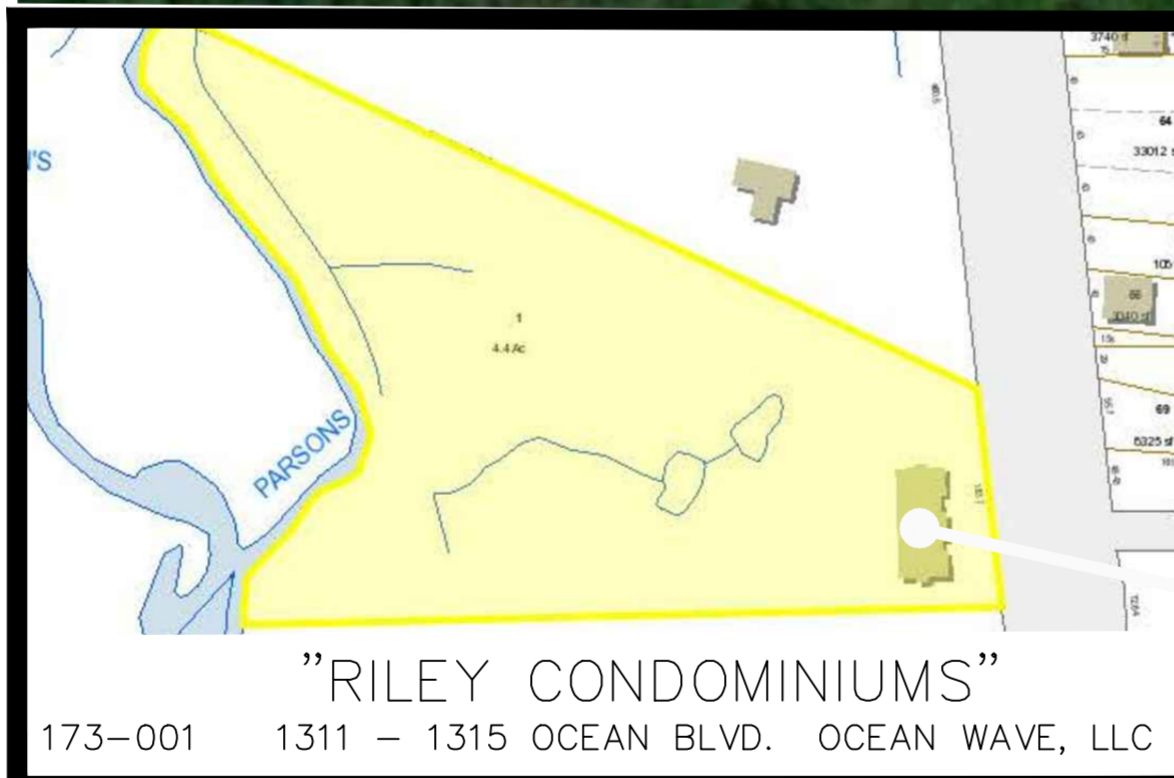
INDIVIDUALS FILING A MOTION FOR REHEARING (MOVANTS)

- ① PELLETIER
- ② PELLETIER
- ③ WILLIAMS
- ④ SCOTT
- ⑤ HEALY
- ⑥ MORIN
- ⑦ MILLEY
- ⑧ WILSON



www.cai-tech.com

TAX MAP/LOT	STREET #	OWNER'S NAME
173-032-001-003	1182 OCEAN BLVD.	RYE POINT CONDO
173-033	1190 OCEAN BLVD.	MCCARTHY
173-030	1191 OCEAN BLVD.	SEAROSE PROPERTIES
173-034	1194 OCEAN BLVD.	DONLON
173-035-002	1196 OCEAN BLVD.	SORRENTO, INC.
173-030-001	1200 OCEAN BLVD.	SURF CLUB OF RYE
173-035-003	1210 OCEAN BLVD.	SORRENTO, INC.
173-036	1212 OCEAN BLVD.	SHARMA TRUST
173-029	1201 OCEAN BLVD.	DONLON
173-028	1205 OCEAN BLVD.	SORRENTO, INC.
173-037-002	1216 OCEAN BLVD.	MACCARONE
173-037-001	1218 OCEAN BLVD.	LILLY
173-037	1220 OCEAN BLVD.	KONA
173-038	1226 OCEAN BLVD.	RICHARDS TRUST
173-039	1228 OCEAN BLVD.	AMEGLIO
173-040	1230 OCEAN BLVD.	GREGG TRUST
173-042	1232 OCEAN BLVD.	GREGG TRUST
173-041	1234 OCEAN BLVD.	GREGG TRUST
173-005	1233 OCEAN BLVD.	AIKENS
173-004	1235 OCEAN BLVD.	BARNES TRUST
173-043	1236 OCEAN BLVD.	POORE & SPURR TR
173-044	1238 OCEAN BLVD.	WILLIAMS TRUST
173-003	1237 OCEAN BLVD.	SCOTT TRUST
173-045	1242 OCEAN BLVD.	GRIFFIN TRUST
173-046	1246 OCEAN BLVD.	COCHRAN
173-048	1248 OCEAN BLVD.	LOMBARD TRUST
173-049	1250 OCEAN BLVD.	MORIN
173-051	1252 OCEAN BLVD.	WILSON
173-052	1254 OCEAN BLVD.	ORCUTT
173-053	1256 OCEAN BLVD.	MILLEY
173-050	1258 OCEAN BLVD.	MORIN
173-054	1260 OCEAN BLVD.	GLANCE TRUST
173-055	1264 OCEAN BLVD.	OCEAN MUSTANG TR
173-057	1266 OCEAN BLVD.	VIKING TRUST
173-056	1268 OCEAN BLVD.	SMITH TRUST

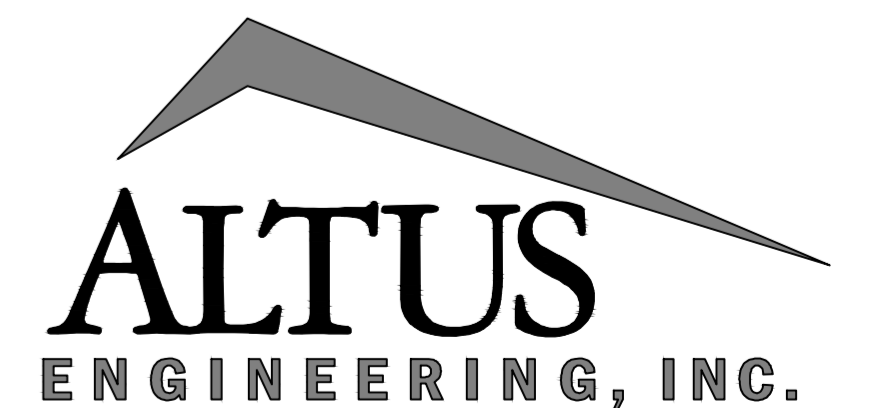


	Town Line		Tract Line
	PWater		Pools
	Property Line		Water-poly
	Public Road		
	Water - planimetric		
	Right of Way		

HEIGHT COMPARISON PLAN

PLAN REFERENCES:

- TOWN OF RYE G.I.S. SURVEY DATA.
- "SITE PLAN", BY ALTUS ENGINEERING, INC. DATED OCTOBER 18, 2019.
- ROOF PEAK ELEVATION SURVEY, JUNE 2018, BY JAMES VERRA AND ASSOCIATES, INC.



133 COURT STREET PORTSMOUTH, NH 03801
 (603) 433-2335 www.ALTUS-ENG.com