

Rye Junior High School
School Board – Principal’s Report
October 16, 2019

Enrollment as of October 16, 2019

Fifth Grade:	45
Sixth Grade:	38
Seventh Grade:	39
Eighth Grade:	47
TOTAL:	169

Upcoming Dates:

- 6th grade @ Merrowvista:** October 21 - 23
- RJH Dance:** Friday, October 25th, 6-8pm
- Band & Chorus Winter Concert:** Thursday, 12/12, 6pm
- End of Trimester 1:** 11/26
- RJH Wizard of Oz Production:** 11/21 – 11/23

Updates:

6th Grade PBL

- The 6th grade has begun a unit focused around fire and community (which is the school theme this year). Students will investigate the essential question of “How does fire bring a community together?” to design and create a fire pit area. Students will also work in STEAM to build chairs to be placed in the patio area.

8th Grade Community Service

- Students in 8th grade have been asked to complete 10 hours of community service this year. Upon completion of each community service activity, students are asked to provide a written reflection. The letter to parents and reflection are included in the drive.

Digital Citizenship Week

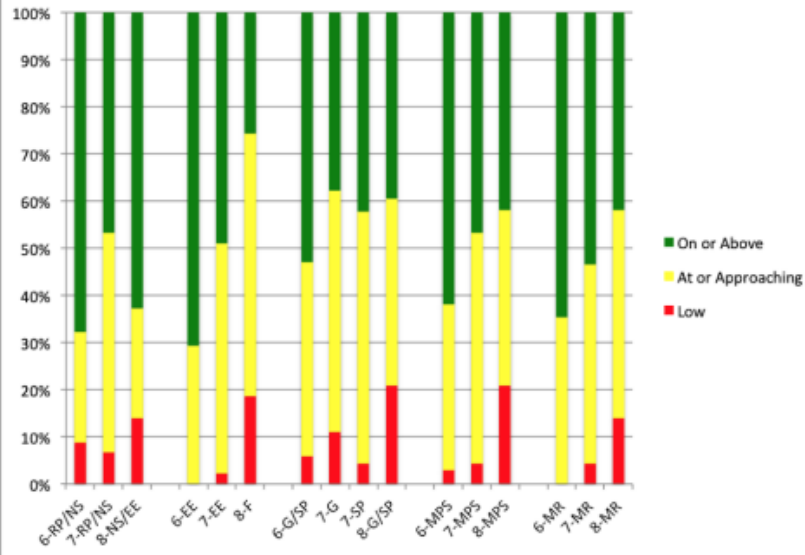
- From October 15th - 18th, students will be celebrating Digital Citizenship Week in their ICT classes. This week will act as a kick-off point to a multi-week unit on the topic, where students will explore the concepts of digital citizenship and begin to question what it means to be a good digital citizen.

Data Teams

This year we are focusing on using data more, both academic and behavior data. The first item that was done was to establish a data team. The team meets weekly and is comprised of the principal, guidance counselor, 6th grade language arts teacher and 7th grade math teacher. Below are some action items that have come out of the team.

- 6th Grade language arts teacher Erin Fleming looked at STAR assessment data from this September to identify students at each grade level who are in need of interventions. She has begun pulling students during the day, mostly during WIN blocks, to provide services.
- On October 2nd, the data team attended a Data Dive workshop put on by Demonstrated Success. Time was spent looking at SAS data and identifying trends. The graphs below were created to look at Math data by strand.
- Content area PLC's (professional learning communities) (Science, ELA, and Math) will meet more frequently. A meeting structure and time have been created for them to meet every 2 weeks. Up to this point, they have only met once a month, after school. This time will be used to look at testing data, and create common assessments and curriculum to address concerns.
- The monthly after school meeting will now be devoted to Social Studies PLCs.
- A "risk review" team has also been established and will meet monthly, opposite the social studies meeting. This team is made up of staff who do not teach SS: principal, guidance, special educator, speech therapist, nurse, 6th grade ela, 7th grade math. This committee will be looking at academic and behavior data collected by teams to determine potential interventions.

Spring 2019 SAS Data



Overall SAS Performance

