

OPEN SPACE PHASE III



Goss Farm 1999

Tracy Degnan, Senior Project Manager, Rockingham County
Conservation District, in partnership with the Rye Conservation
Commission February 2020

Goss Farm – September 2019



**THANK
YOU**



Open Space Objectives

Reasons to Conserve Open Space

- ✓ To strengthen Rye's pride of place
- ✓ To retain Rye's rural character
- ✓ To protect natural resources and wildlife habitats
- ✓ To protect our water quantity and quality
- ✓ To buffer the impacts of population growth and development
- ✓ To provide resiliency for smart growth

OPEN SPACE PAYS OFF IN THE LONG RUN

2015 HIGHEST RANKED WILDLIFE HABITAT BY ECOLOGICAL CONDITION

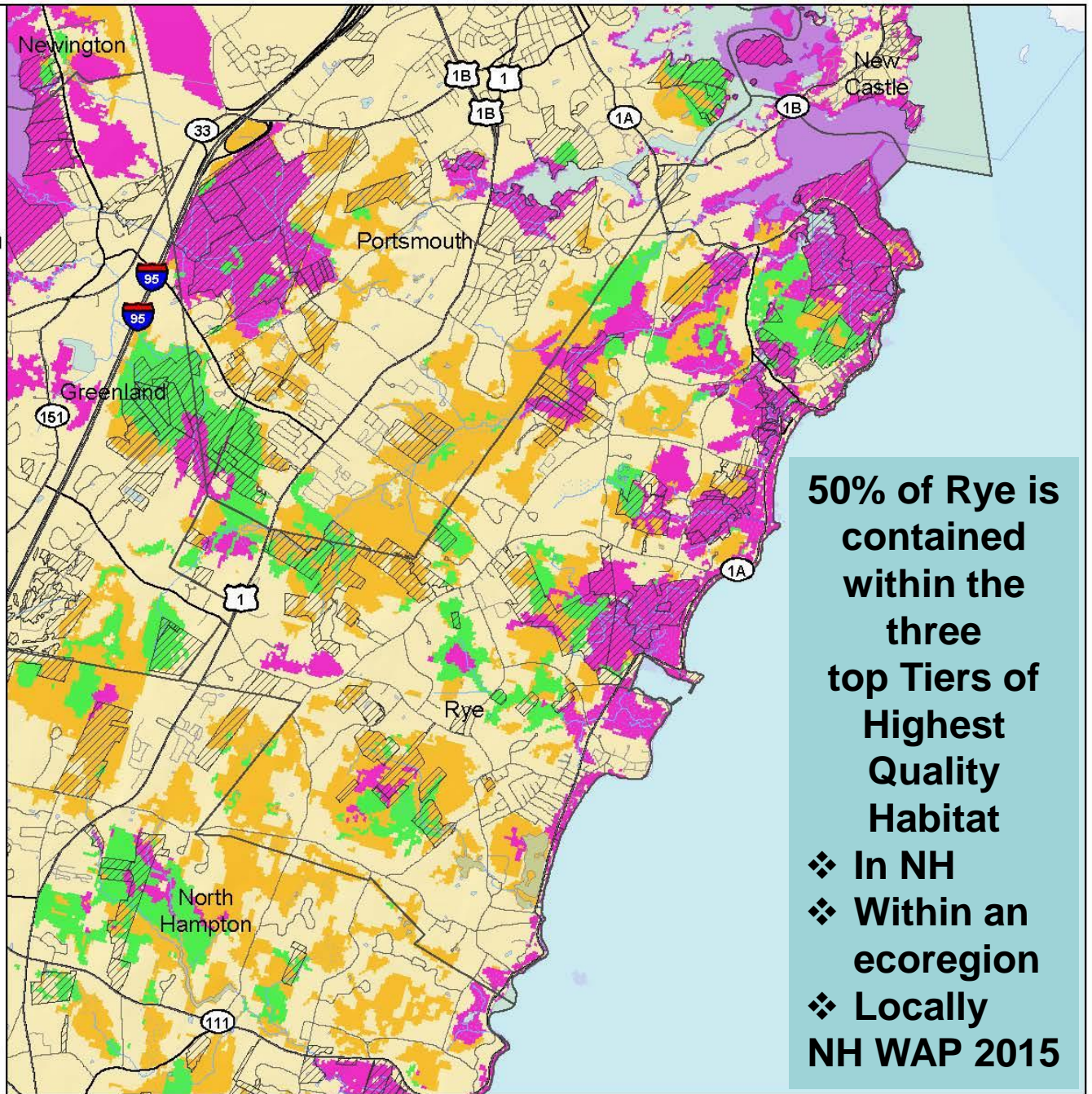
 Highest Ranked Habitat in New Hampshire

 Highest Ranked Habitat in the Biological Region

Biological region = TNC ecoregional subsection for terrestrial habitats or Aquatic Resource Mitigation region for wetlands and floodplain forest.

 Supporting Landscapes

 Conservation or public



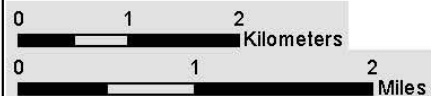
50% of Rye is contained within the three top Tiers of Highest Quality Habitat

- ❖ In NH
- ❖ Within an ecoregion
- ❖ Locally NH WAP 2015

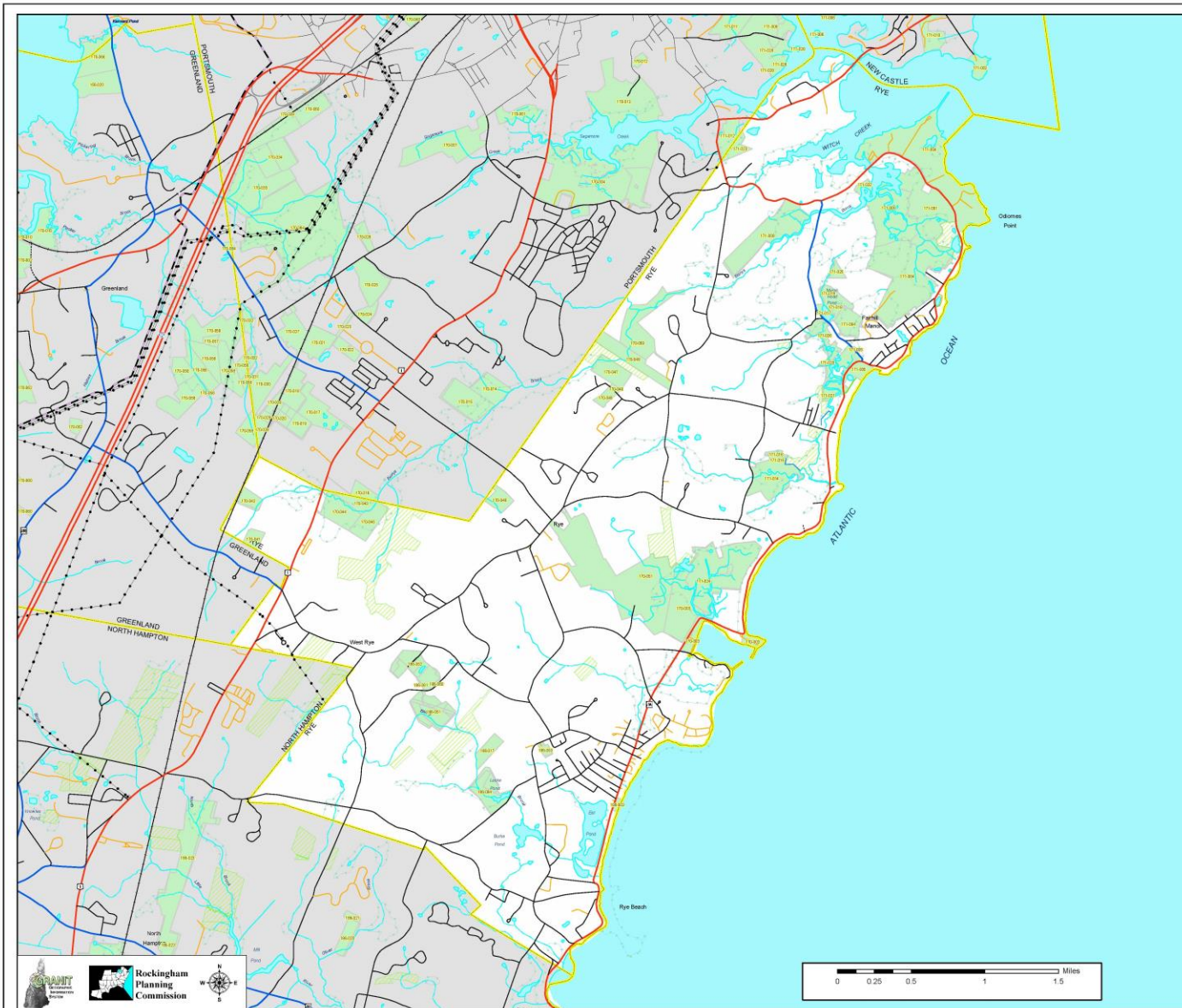
Base map data provided by NH GRANIT (2015)
Not intended for legal use.



NEW HAMPSHIRE
Wildlife Action Plan
September 2015



Protected Parcels in 2003



Rockingham Planning Commission Standard Map Set

Conservation Lands Map Rye, New Hampshire




















June 2003

LEGEND

-  Newer Conservation Lands (by RPC)
-  GRANT Conservation Lands, Statewide

GRANT Conservation Lands are labeled with unique Tract ID numbers, which relate to attribute database available separately.

BASE FEATURES

- | | | |
|---|---|--|
| Roads by Legislative Class
<ul style="list-style-type: none">  Class I - Primary System  Class II - Secondary System  Class III - State Recreational  Class IV - within Compacts  Class V - Unmaintained Municipal  Private | Political Boundaries
<ul style="list-style-type: none">  State Boundary  County Boundary  Town Boundary  Railroads  Major Powerlines  Major Pipelines | Surface Water Features
<ul style="list-style-type: none">  Shoreline  Intermittent Stream  Apparent Wetland Limit  Other Water Feature  Stream  Bodies of Water  Adjacent Municipalities |
|---|---|--|

This is a data based for the Rockingham Region. All features may not be present within the extent of this map.

MAP DATA SOURCES

Conservation Lands are from the NH GRANT database. This database includes parcels of land of two or more acres that are mostly undeveloped and are protected from future development. The data was developed from the records of the Society for the Protection of Old Forests (SPOLF), many of the state agencies, and original research from aerials and tax maps. Conservation Lands on this map were released by GRANT in February 2003.

Base Features

Base features (transportation, political and hydrographic) were automated from the USGS Digital Line Graph data, 1:24,000, as archived in the GRANT database at Complex Systems Research Center, Institute for the Study of Earth, Oceans and Space, University of New Hampshire, Durham, NH, 1992-1993. The roads within the Rockingham Planning Region have been updated by Rockingham Planning Commission and by NH Department of Transportation through ongoing efforts.

NOTE: Base features for areas surrounding the Rockingham Region may be shown on this map. These features were automated from USGS 1:100,000 scale digital data sources. This information was provided for reference only. RPC makes no claim to its completeness or accuracy.

THIS MAP WAS FUNDED BY A GRANT FROM THE NH OFFICE OF STATE PLANNING

Protected Parcels

\$3m dollar bond, passed March, 2014

86 acres

(2 properties)

- Vernal pools & wetlands
- Access and walking trails
- Water District wellhead protection
- Protection of Baily's Brook
- Protection of Atlantic White Cedar swamp



Protected Parcels

\$3m dollar bond, passed March, 2014

Rand/Wallis Road

2016

73 Acres

Leveraged
\$260,000 with
State and
Federal funds



- Access & Walking trails
- Wetlands, vernal pools
- Restoration opportunities
- Berry's Brook Watershed protection
- Source water protection & water rights

Protected Parcels

\$3m dollar bond, passed March, 2014



Blake property .5 acre upland
and Wallis marsh protection,
2019

Brown Orchard 3 Acres 2019
upland contiguous with
250 +/- acres protected lands
Access from two different
conservation properties



Protected Parcels

\$3m dollar bond, passed March, 2014

West Road 79 Acres 2020 (very soon)

- Baily Brook protection
- Two rare species, vernal pools
- Water District Wellhead protection
- Walking trails
- Restoration opportunities
- Educational opportunities
- Water rights

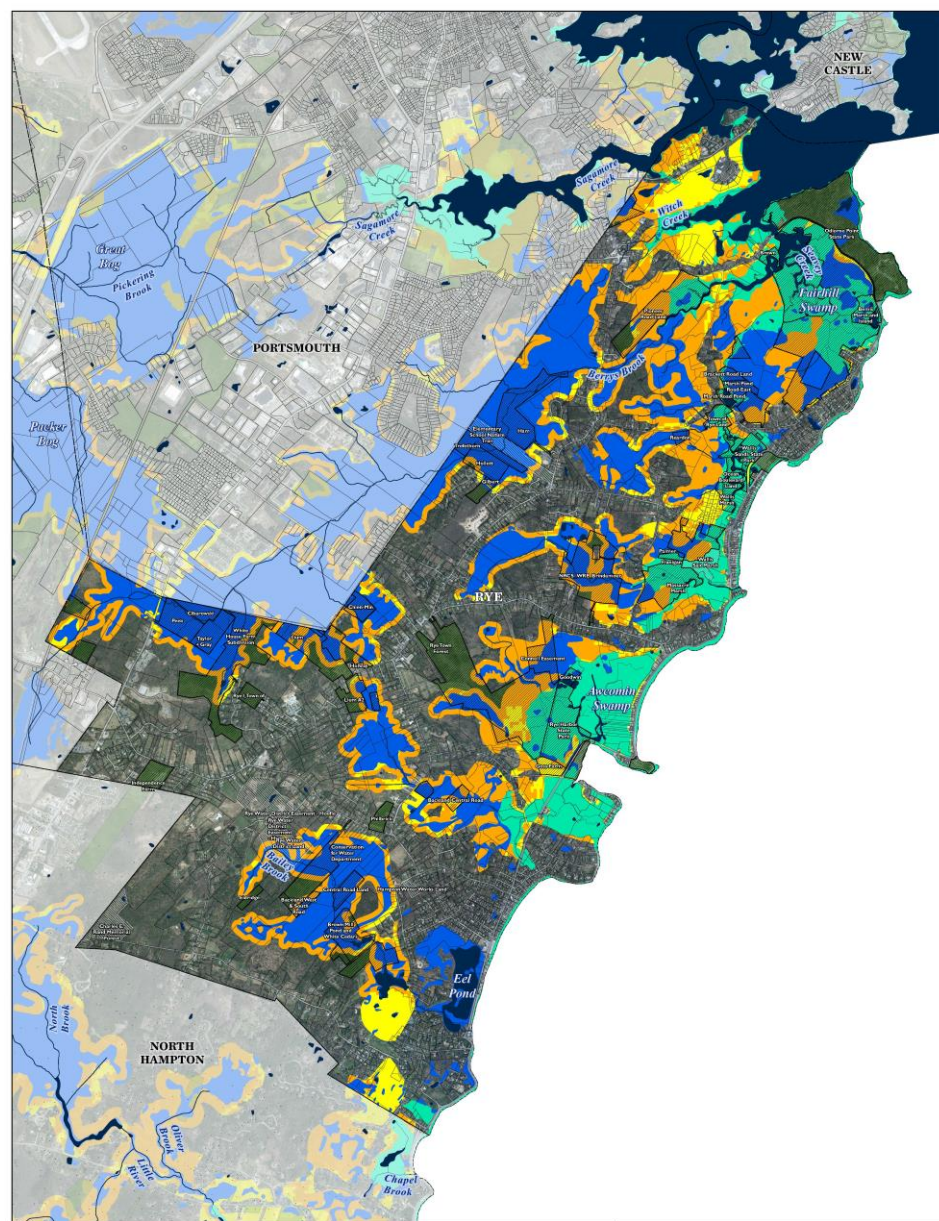
Access from two roads
– totals 250 acres of protected lands



Leveraged \$550,000 +/-
from Federal sources



Tools to Assist with Conservation Priorities



Legend

- Riparian Buffer Areas
 - Restoration Priority
 - Protection Priority
- Conservation Land
- Public/Other Land
- Municipal Boundary

- Surface Water or Wetland
 - Estuary
 - Freshwater Wetland
 - Open Water



0 0.5 1
Miles

Land Conservation for Water Resource Protection

Buffers for Water Quality Protection

Rye,
New Hampshire



Map created 11/8/2018 by:
The Nature Conservancy
New Hampshire
Data displayed from NH GRANIT,
NHDES, & The Nature Conservancy.

Conservation Commission is Committed

Conservation Commission works with the Board of Selectmen on process, and leveraging funds will be a top priority.

Use of new resource mapping helps the Commission to prioritize parcels for protection – landowner willingness is key!

Focus on watershed and water resource protection, greenways, habitat corridors

Doing this NOW will leave an amazing legacy for future generations

Rye has a great history protecting these resources - 40 + years



Glasswort in the fall off of Wallis Road saltmarsh and uplands in background

Conservation updates to 2019



2014-2020 leveraged so far

\$810,000 +/-

Spending approximately

\$1,700,000

For every bond dollar spent an additional investment in permanent land protection occurred – from donations, grants, bargain sales and land purchased at Town assessed (or less than) values.

Success – Town wins!

Properties protected via donation, purchase and conservation easement. Without a bond in place negotiations with landowners can be difficult. Land transactions can take a long time – we've had a couple that have spanned a decade!

PLEASE SUPPORT OPEN SPACE BOND 2020

Warrant article for **\$3,000,000** for 2020 will allow several additional parcels to be permanently protected.



BOND BASICS

- 19 cents to tax rate for ten years based on estimated amortization schedule
- This funding method has the smallest impact on property tax rates
- No tax impact for 2020
- Only way to leverage possible matching funding sources and protect the most acreage
- Best way to negotiate with landowners and offers you more time to secure other funds

Funding for Open
Space Is an
Opportunity to
Retain What We
Love About Our
Community for the
Long Term

PLEASE
SUPPORT
OPEN SPACE
IN RYE

√ \$3,000,000

2020



Rye
Conservation
Commission

THANK
YOU