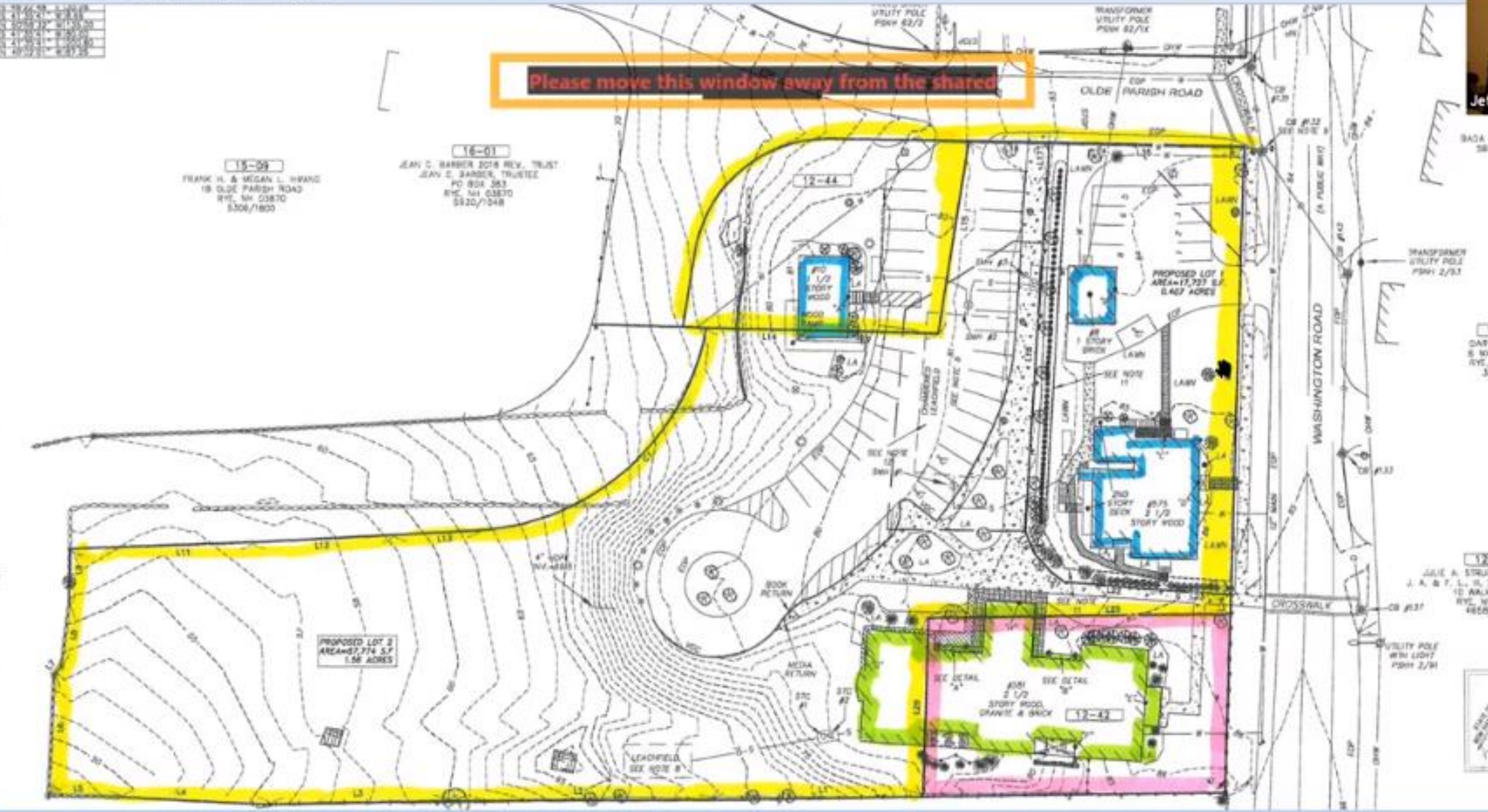


15-01	15-02	15-03	15-04	15-05
15-06	15-07	15-08	15-09	15-10
15-11	15-12	15-13	15-14	15-15
15-16	15-17	15-18	15-19	15-20
15-21	15-22	15-23	15-24	15-25
15-26	15-27	15-28	15-29	15-30
15-31	15-32	15-33	15-34	15-35
15-36	15-37	15-38	15-39	15-40
15-41	15-42	15-43	15-44	15-45
15-46	15-47	15-48	15-49	15-50

Please move this window away from the shared

15-09  
FRANK H. & MEGAN L. HWANG  
18 OLDE PARISH ROAD  
RYE, NH 03870  
5308/1800

16-01  
JEAN C. BARDER 2014 REV. TRUST  
JEAN C. BARDER, TRUSTEE  
PO BOX 353  
RYE, NH 03870  
5320/1048



Jet

SAGA

SHI

TRANSFORMER

UTILITY POLE

Pole #2/3

TRANSFORMER

UTILITY POLE

Pole #2/1

17

J. A. & F. L. S. I

10 WALK

RYE, NH

4850

UTILITY POLE

with 1/2" 2/1