

Rye's Route 1 Lafayette Road

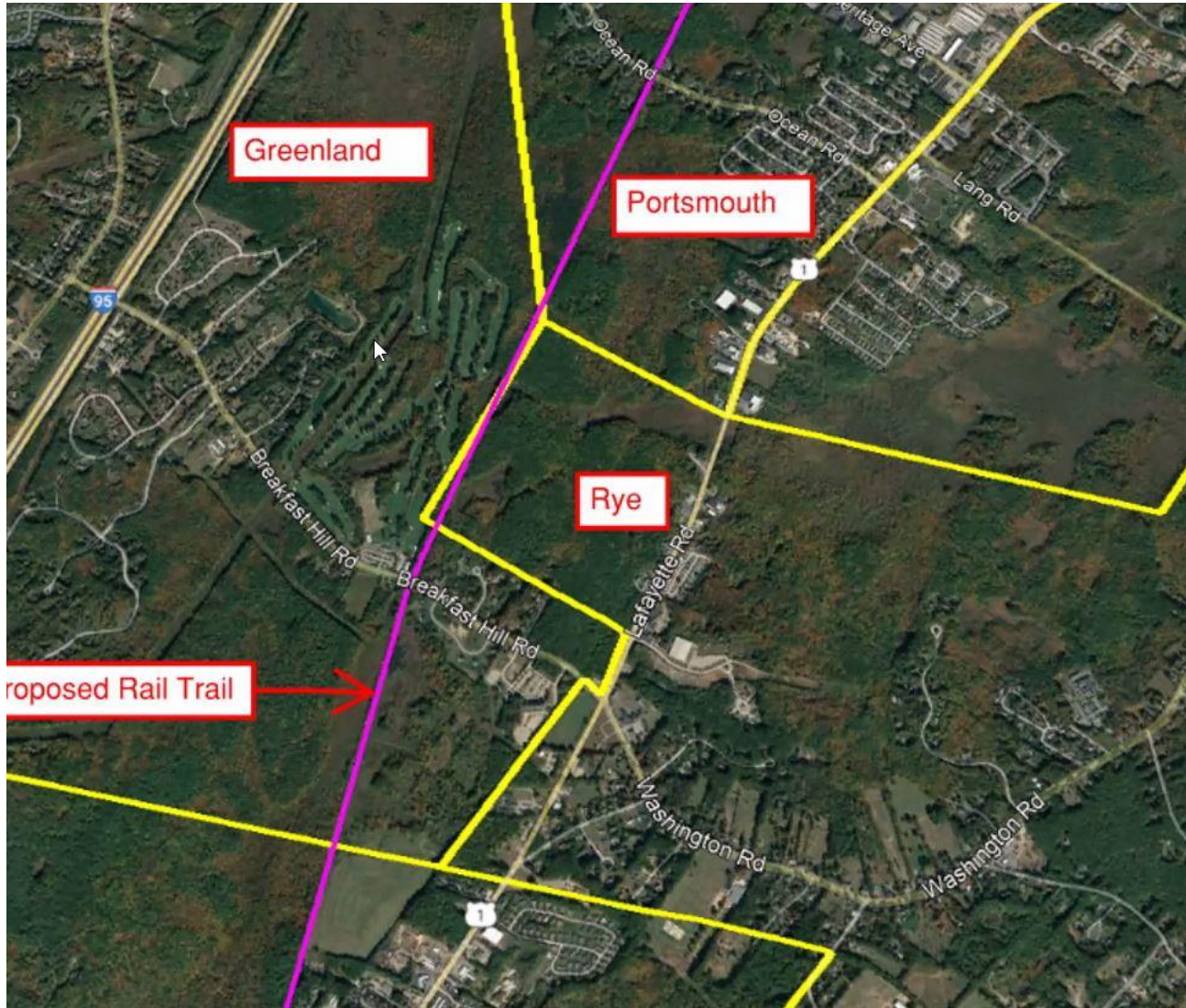


Purpose

This “living” presentation is to capture information associated with Rt. 1 developments.

Sections:

- Overview
- Water & Sewage
- Developments
- Impacts



Berry's Brook Town Information [Click Here](#)
[Map](#)



Coakley Landfill EPA Superfund Site [Click Here](#)
Coakley Landfill Group [Click Here](#)



Overview

Sewage:

- Adam's Park has septic tanks that are pumped out.
- Portsmouth Sewer stops at
- N. Hampton/Greenland – all septic?

Water:

- Rye Water -
- Portsmouth Water
- Aquarion ?

Existing Developments:

- Xx Housing Partnership Development
- 20 units 1244 Washington Road
- ????

Approved Developments:

- 40 units Housing Partnership (2018 approval)
- 30 Units at Hector
- Benchmark Expansion
- Motel upgrades and changes

Developments in Discussion:

- 80 Units Greenland/Rye
- Rye Airfield
- N. Hampton/Greenland – all septic?
- ?

Sewage

- Get all the key facts and information
- Draw a circle and find out what the Max septic system could be?
Impact to Berry's Brook
- Information about Connecting with Portsmouth
- History of what has been tried
- Different options to fund Sewer connection and current status

Water

- Estimates of General use
- Worst case for all water needs
- Fire suppression water – worst case
- Irrigation Impact
- Increase to RWD capital equipment to support water
- Sensitivity analysis to the rest of RWD during drought?
- What was approved for 30 units at Hector and Benchmark

Current Facilities on Rt. 1

- List these out – what is there today
- Septic impact and what is happening
- What does the Town currently monitor for conditions... (our responsibilities). If possible dig out the variances and waivers granted
- Total units of WFH so that this can be tracked

Approved Developments

- List what they are and give a short summary of each
- For each Include total variances, waivers and conditions to be monitored
- WFH
- Water and Sewage impact

Developments under Discussion

- Summary of what is being proposed
- Where it is in the process

Berry's Brook

- Focus on what development can do to this watershed?
- What has to be watched out for

Coakley Landfill

- If more water from irrigation and septic systems is flowing, what is the impact to Rye