



SCHOOL ADMINISTRATIVE UNIT 50
Greenland, New Castle, Newington, Rye
48 Post Road
Greenland, NH 03840
603-422-9572
www.sau50.org

Stephen Zdravec
Superintendent
szdravec@sau50.org

Kelli R. Killen
Assistant
Superintendent
kkillen@sau50.org

Susan Penny
Business
Administrator
spenny@sau50.org

Stacey Kirby
Director of Special
Education
skirby@sau50.org

Chris Russo
Director of
Technology
bgrattan@sau50.org

Brian Helfrich
Director of Facilities
bhelfrich@sau50.org

SAU 50 Administrator Report
Brian C. Helfrich – Rye
April 19th - 2023

Accomplishments and Successes

- ★ Asbestos AHERA (Asbestos Hazard Emergency Response Act) 3 year EPA inspection reports for both [Rye Elementary School](#) and [Rye Junior High School](#) have been received and stored digitally on the drive. All schools within SAU 50 are finally on the same schedule and compliant. This is critical information whenever we do future work at the schools and to maintain safety for students and staff. I have completed the 3 hour asbestos training course and am able to help identify many types of commonly found asbestos products from insulations to mastics and glues and will continue to educate myself in these areas.

- ★ [Seacoast Security](#) located in Portsmouth, NH is taking over Newington, New Castle and both Rye schools security systems in June. GCS is in the works to hopefully have Seacoast Security takeover their school security system as well later in the summer. Seacoast Security have been super responsive, competitively priced and being local....have taken more pride in this aspect of our schools. They will be upgrading the old Napco security system control, keypads, zone expanders, cellular backup communications and connect a new DMP system. <https://www.dmp.com/>

This is the first step to getting all the SAU 50 schools on the same system, make it more secure and most importantly set us up to more easily make future security upgrades. Their initial work is slated for June 5th-8th in the Rye schools.



- ★ The girls softball field will be installing a solar powered scoreboard. There was quite a bit of back and forth with the building inspector (I will note they are not used to having RES/RJH apply for permits but I explained we are doing this by the book moving forward and what was done in the past, is in the past). This is slated to be done over April break. Everyone I talk to is eagerly anticipating this install and timing is perfect. Huge shout-out to Rye resident, parent and coach Emil Uliano for his help in driving this project to a reality.



- ★ As you are all aware, we successfully secured [A & M Roofing](#) for our massive RES roof project. 2 weeks ago myself, Jim Gordon, Steve Burns [SAU 50 roofing consultant from ARM](#) and Jim Loos (President

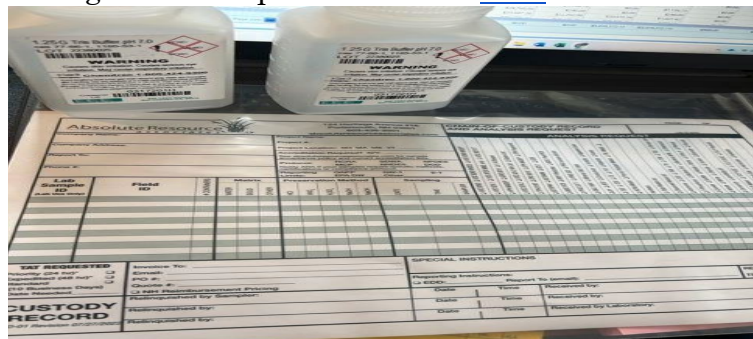
of A & M) walked the RES roof and highlighted areas to focus on and nailed down specifics of the project. This project will most likely take 2 months (weather depending) starting after school ends and finishing middle-late August roughly.



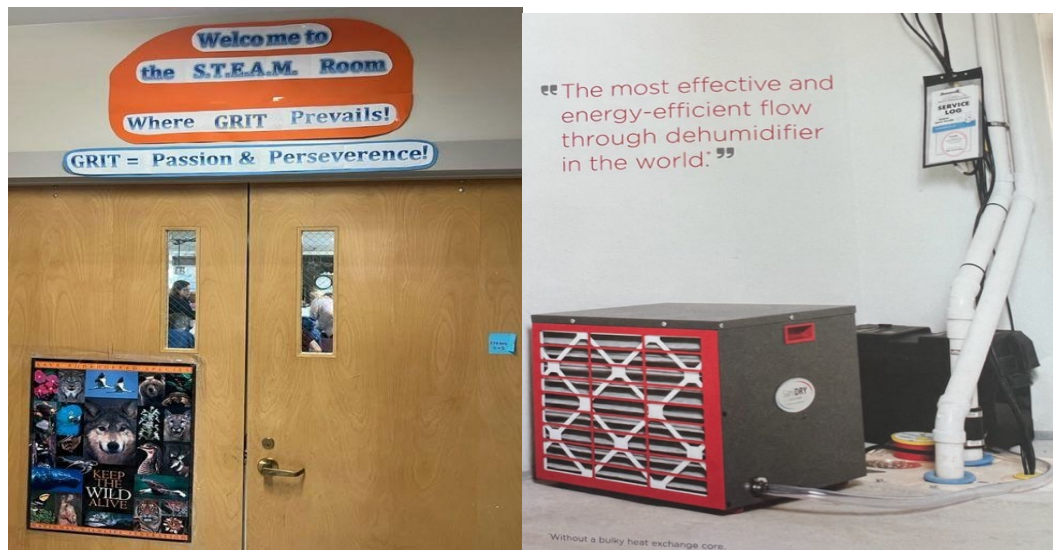
- ★ [American Window Film \(3M Company\)](#) conducted a walkthrough last month to see where if any we have primary safety concerns that can be addressed with security impact film. This prevents easy access through glass panes and is a simple step and relatively inexpensive way to make buildings more secure. Rye Junior High and Rye Elementary will be having numerous exterior doors installed with this film. We are in the process of final scheduling and aiming hopefully for a May install. Security film demonstration video can [be found here](#).

Challenges/Future Budget Implications

- ★ In April on numerous occasions, we met with Rye Fire Chief Mark Cotreau and Rye Fire Prevention Officer Jeff Dibartolomeo to discuss options for fire code safety for the RES 1st/2nd grade wing rooms 101-108. In recent years with more and more outdoor education taking place, students bring in boots, bags, winter pants, jackets, gloves etc. We are trying to find a balance to ensure this important outdoor education can continue and we are fire code compliant. A [shelving system](#) may need to be installed and/or at the least, numerous hooks for each student. We have a tight space to work with and space is limited inside the classrooms. I want to thank the fire department for their help strategizing with the school to come up with a viable solution.
- ★ RJH Spring Cleaning - Dozens/hundreds of desks chairs (what I will call outdated classroom furniture). We really need to haul away, donate etc to open space for storage. This from my understanding has been an issue for many many years. I would say 50% at least of stuff in RJH basement storage is junk past useful life. I got a quote for Jim Gordon and we are scheduling a rolling dumpster for a late June/early July spring cleaning.
- ★ Due to recent changes in acceptable levels, both lead and PFAS/PFOS have been in the news all over the country and Rye is no different. I had a call with the new Rye Water Commission Rosalie Lapresso and the focus was the safety of town/school water. Our joint goal is to be as proactive as possible. To that end I have had calls with NHDES (NH Department of Environmental Services) to get information on testing and information on a “point of entry” water treatment for PFAS/PFOS. This will be a focus of mine until resolved. I conducted water testing at the schools April 10th to see exactly where our levels are and submitted to [Absolute Resources](#). More information on the EPA PFAS Strategic Roadmap can be found [here](#).



- ★ Doors - Our recent Homeland Security Assessment highlighted the need to start replacing our exterior doors at RES. They are all 27+ years old or “pre-Columbine” as was used recently. Some have been there since Deputy Chief Blaisdell was a student. Having also spoken with Chief Walsh, he agrees. This will be a focus of mine for future budgets. A recent COPS grant went out to police departments and Chief Walsh is looking into possibly using this if we qualify for replacement of doors. This grant pays for 75% and allows the town over 3 years to pay back the remaining 25%.
- ★ STEAM Room/PIT - If you have been to the STEAM classroom at RJH, you might have seen the “PIT” across from it. Apparently there is an underground river that flows outside that portion of the school. This is a storage room (I recently found out it was actually the teacher lounge in the mid 1990’s until it started flooded) that has flooding, water seepage and mold. I reached out to TC Hafford Basement Solutions (they are installing a commercial dehumidifier at the CO) to see what they can do to install a sump pump and take the humidity out of the room with a commercial dehumidifier so it can safely store robotics/engineering equipment and tools from the STEAM room. This is also a safety concern for the building overall and the exact type of project we should tackle at RJH to increase useable storage space.



Various

- ★ Solar at RES - While it has been a mild winter, I can say every time I have been on the roofs in Rye, it has been very cold and windy. We are in the beginning phases of discussion on the RES solar roof project.

This time around, the Rye Energy Committee (Tom Pfau and Howard Kalet) is very interested in being a part of that discussion, specifically around the solar contracts and options we have with a turkey operation versus a PPA. We had a call on this topic last Friday. More information will be forthcoming.

- ★ RJH Granite Sign. I am going to reach back out to Peter Aikens to see if the offer still stands to donate a match RJH granite sign like at RES. Back at the September board meeting we had tossed around some options. I want to make sure what I convey to Peter is crystal clear. There is the issue of what should go on the sign and the font used. It is possible Peter will ask we use matching fonts (he did mention this) but I will convey whatever you decide.

1. **Rye Junior High School**
Established in 1933
2. **Rye Junior High**
Established in 1933
3. **Rye Junior High School**
A Middle School
Established in 1933



- ★ RES playground - The playground committee met last week and we went over numerous possible fundraising options. The committee asked me to request help in this effort. While this year there is no way we will install the playground by June 30th, next year it will be installed. They asked if there is a way to “delay” the request for budget aid until new fiscal year starts July 1st. As of this report here is the totals raised, needed and left to raise.

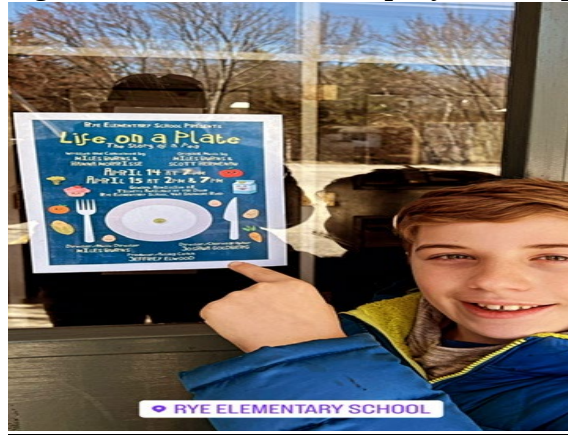
A	B
Donor	Funds Raised
Golf Tournament	39,000
PTA	50,000
Walkathon	19,519
REF	15,350
Total Raised	123869
Total Needed	275000
*Left to Raise	151131

- ★ I wanted to highlight and shout out the hard work Michelle, her daughter Lu, Shari and Staci at the RES front office all did over winter break to create an incredible space at RES for students and staff alike.



- ★ “Life on a Plate” play went GREAT! Shoutout to Michelle for being involved in the play and the custodial staff at RES for working so

hard while understaffed to make it all happen. I love seeing our facilities host events like this and the RJH Little Mermaid plays. Shameless plug of some student who played the “pink lady” apple...



★ I am proud to announce that RJH finally got their EV charging station. This has been years in the making and everyone is excited to have it at the school. In what can only be described as subtle hazing I noticed someone tried to charge my gas powered truck...the culprit is still at large....

