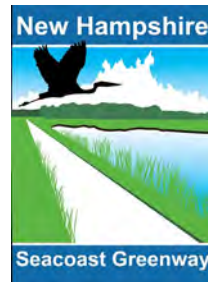


New Hampshire Seacoast Greenway Community Connections Design Workshop

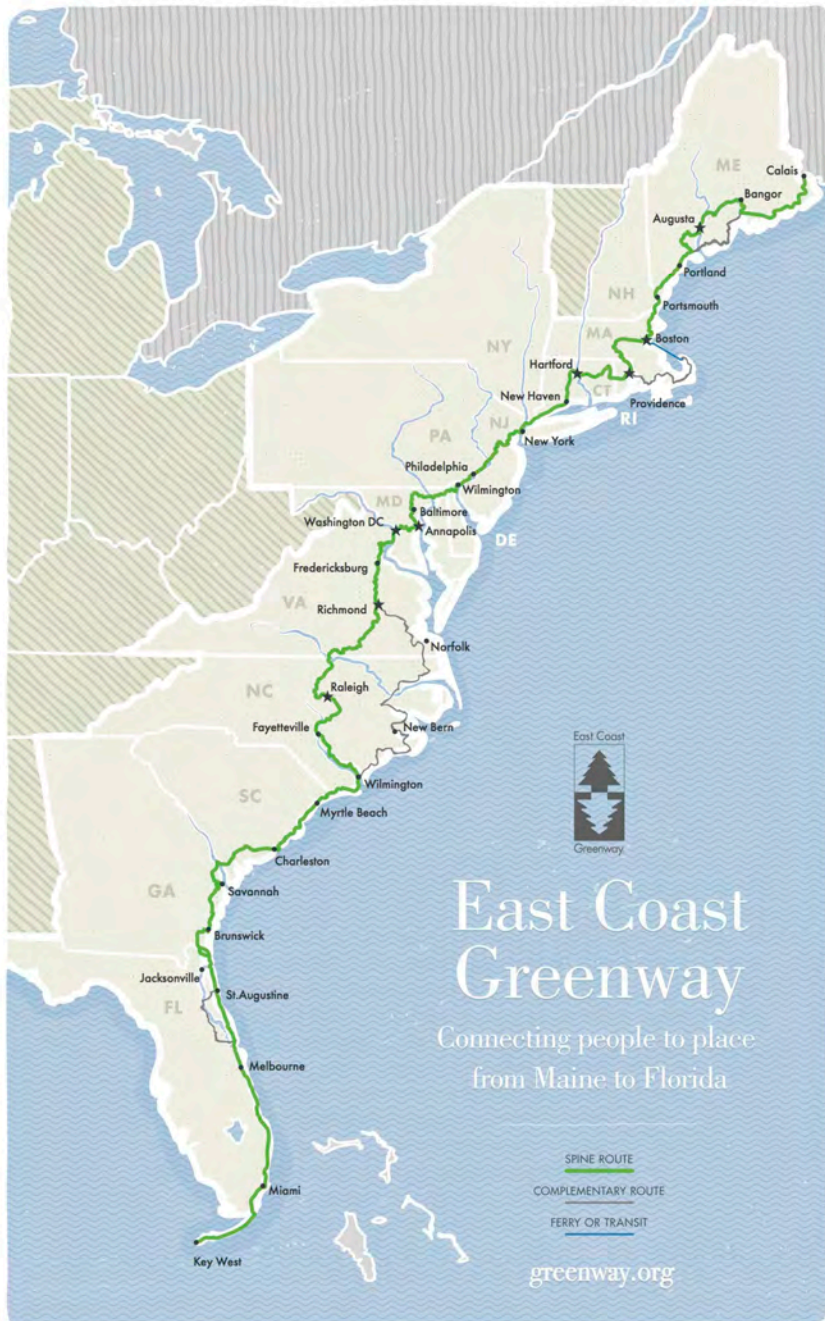


Portsmouth Public Library
September 23, 2022



East Coast Greenway

The East Coast Greenway is envisioned as an urban Appalachian Trail, extending 3,000 miles from Calais, ME to Key West, FL, connecting major cities, small towns and natural areas along the East Coast.



Down East Sunrise Trail, Maine



Florida Keys Overseas Heritage Trail, Florida





The Greenway Through New England

321 miles completed off-road

199 miles in pipeline

58 miles alignment identified

169 miles current gap (on-road for now)

Connects New York City, New Haven, Hartford, Providence, Worcester, Boston, Newburyport, Portsmouth, Portland



NH Seacoast Greenway Summary of Project Phases



Phase IA – North Hampton - Ports (8 mi)

*Construction in progress
Completion fall 2024*



Phase IB – Hampton (1.6 mi)

*Design and permitting in progress
Construction 2024*



Phase II – Seabrook (2.4 mi)

In TYP for 2030



Phase III – Hampton Falls Marsh (2.3 mi)

In TYP for 2032

National Park Service Technical Assistance Grant

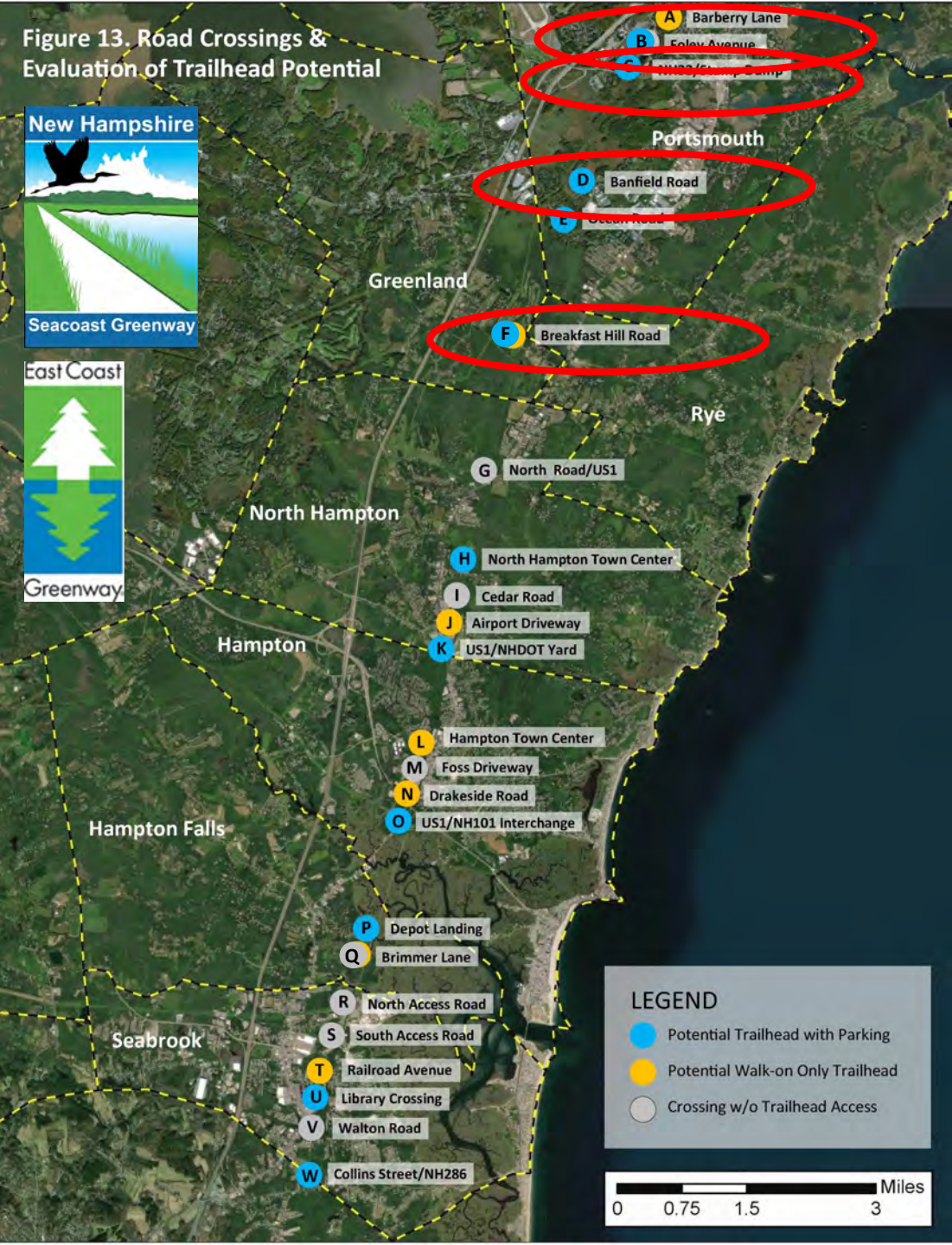
NPS Rivers, Trails & Conservation Assistance Program

Project Workgroups

- **Community connections & Trailheads**
- **Trail Signage Planning**
- **NHSGA Organizational Development**



Figure 13. Road Crossings & Evaluation of Trailhead Potential




NH Seacoast Greenway Community Connections Design Workshop #1

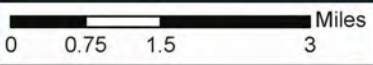
*Portsmouth Public Library
September 23, 2022*

Focus on Four Trail Access Points

-  Borthwick Avenue
-  NH33/Stump Dump
-  Banfield Road
-  Breakfast Hill Road

LEGEND

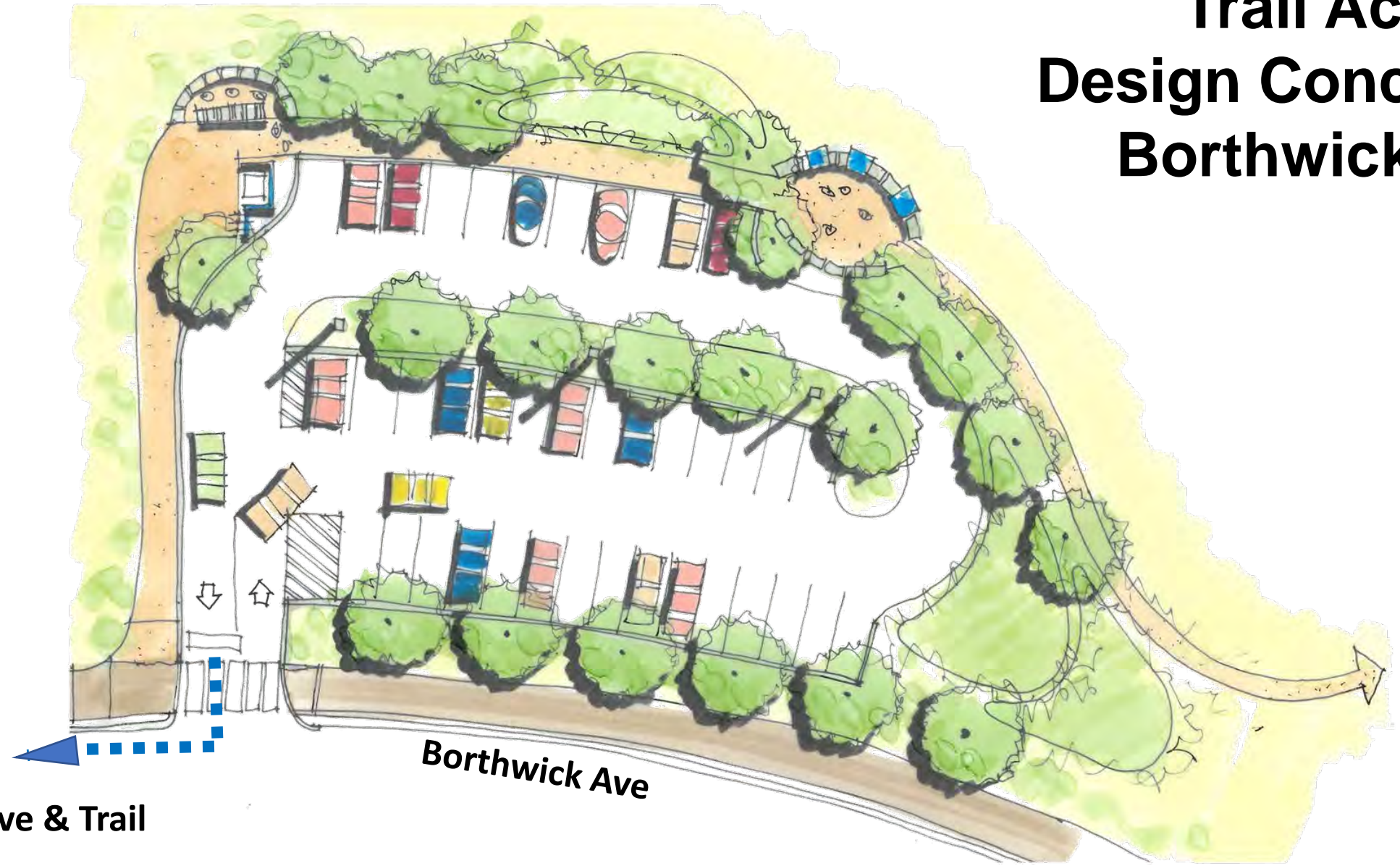
-  Potential Trailhead with Parking
-  Potential Walk-on Only Trailhead
-  Crossing w/o Trailhead Access



Trail Access Design Concepts Borthwick Ave & Eileen Dondero Foley Ave



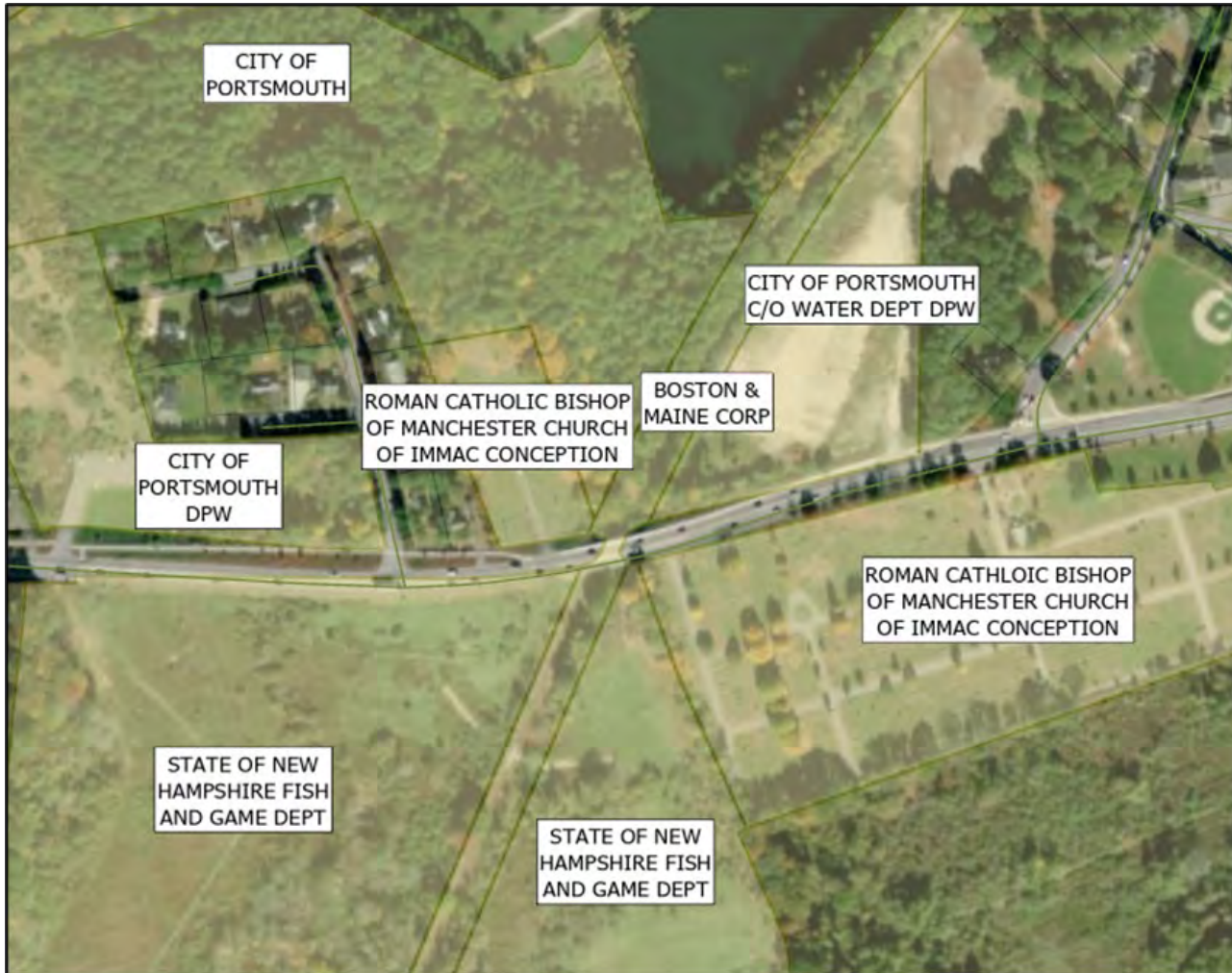
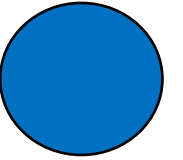
Trail Access Design Concepts Borthwick Ave



To Foley Ave & Trail

Borthwick Ave

Crossings with Trailhead Parking Potential



Site: NH33/Stump Dump

City: Portsmouth

Adjacent public land: Yes

Neighborhood Proximity: Limited

Business Proximity: No

In plans: City Ped/Bike Plan

Trail Access Design Concepts NH33/Stump Dump

Site: NH33/Stump Dump

City: Portsmouth

Adjacent public land: Yes

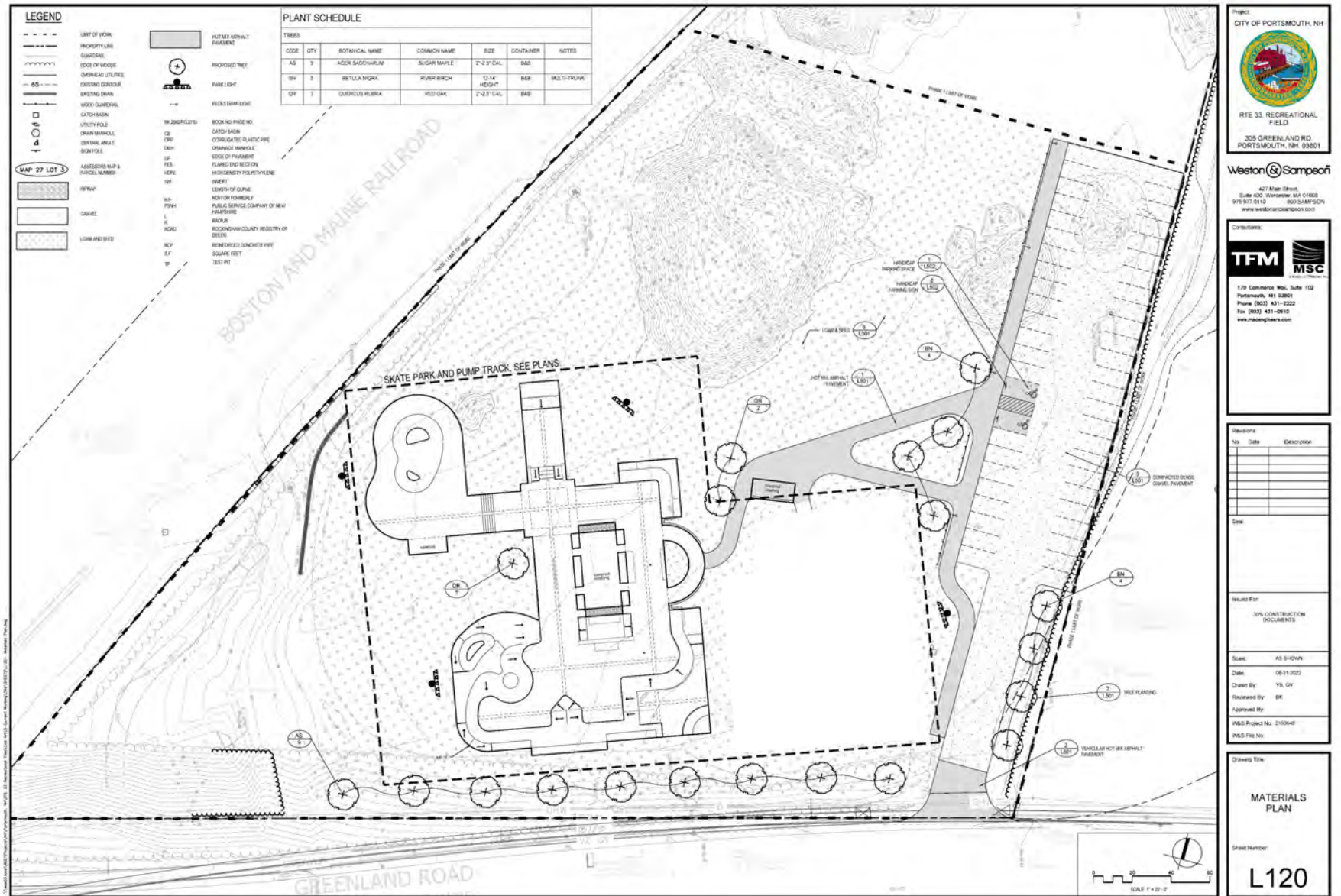
Neighborhood Proximity: Limited

Business Proximity: No

In plans: City Ped/Bike Plan



Stump Dump Skate Park Concept – 30% Design



- Phase IA - Portsmouth to North Hampton
- Phase IB - Hampton (North)
- Phase II - Seabrook
- Phase III - Hampton Falls-Hampton (South)
- GRANT Conservation and Public Land
- State Owned Parcels
- Portsmouth Owned Parcels

North to
Downtown

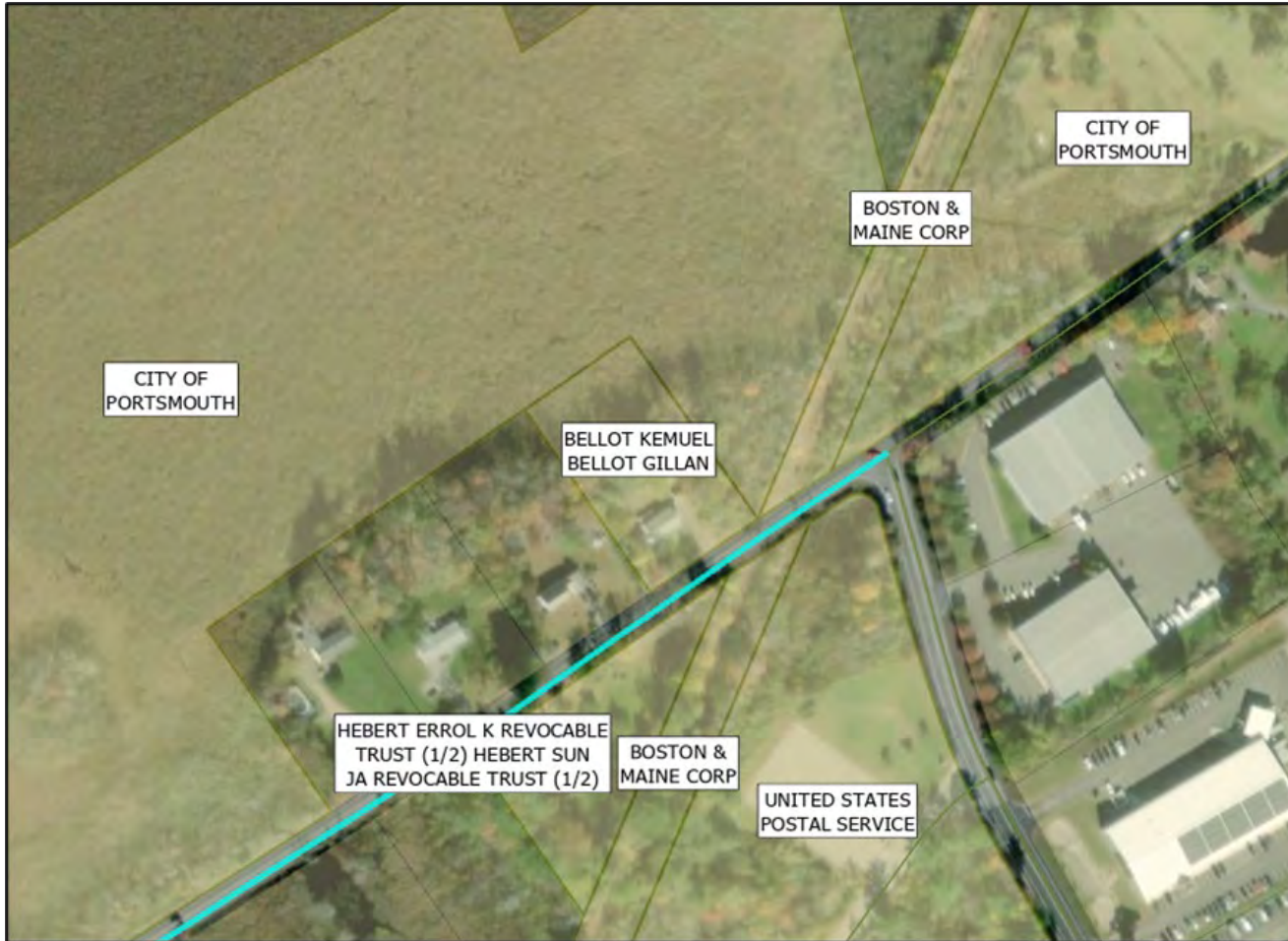
Trail Access Design Concepts NH33/Stump Dump



Trail Access Design Concepts NH33/Stump Dump



Crossings with Trailhead Parking Potential



Site: Banfield Road

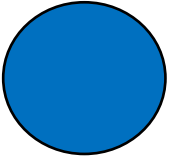
City: Portsmouth

Adjacent public land: Yes

Neighborhood Proximity: Limited

Business Proximity: Industrial

In plans: City Ped/Bike Plan



North to
Portsmouth

Trail Access Design Concepts Banfield Road

Rail Trail

South to
Hampton

Banfield Road

BANFIELD RD

North to
Portsmouth

South to
Hampton

Rail Trail

Trail Access
Design Concepts
Banfield Road



Banfield Road

BANFIELD RD

North to
Portsmouth

Trail Access Design Concepts Banfield Road

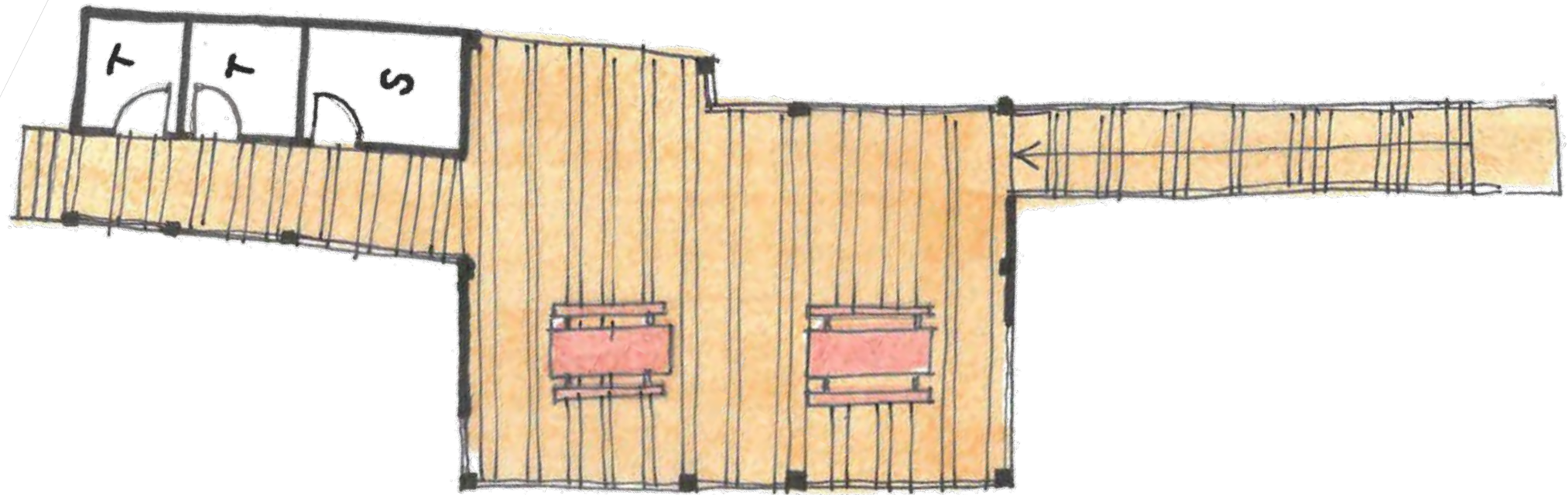


Rail Trail

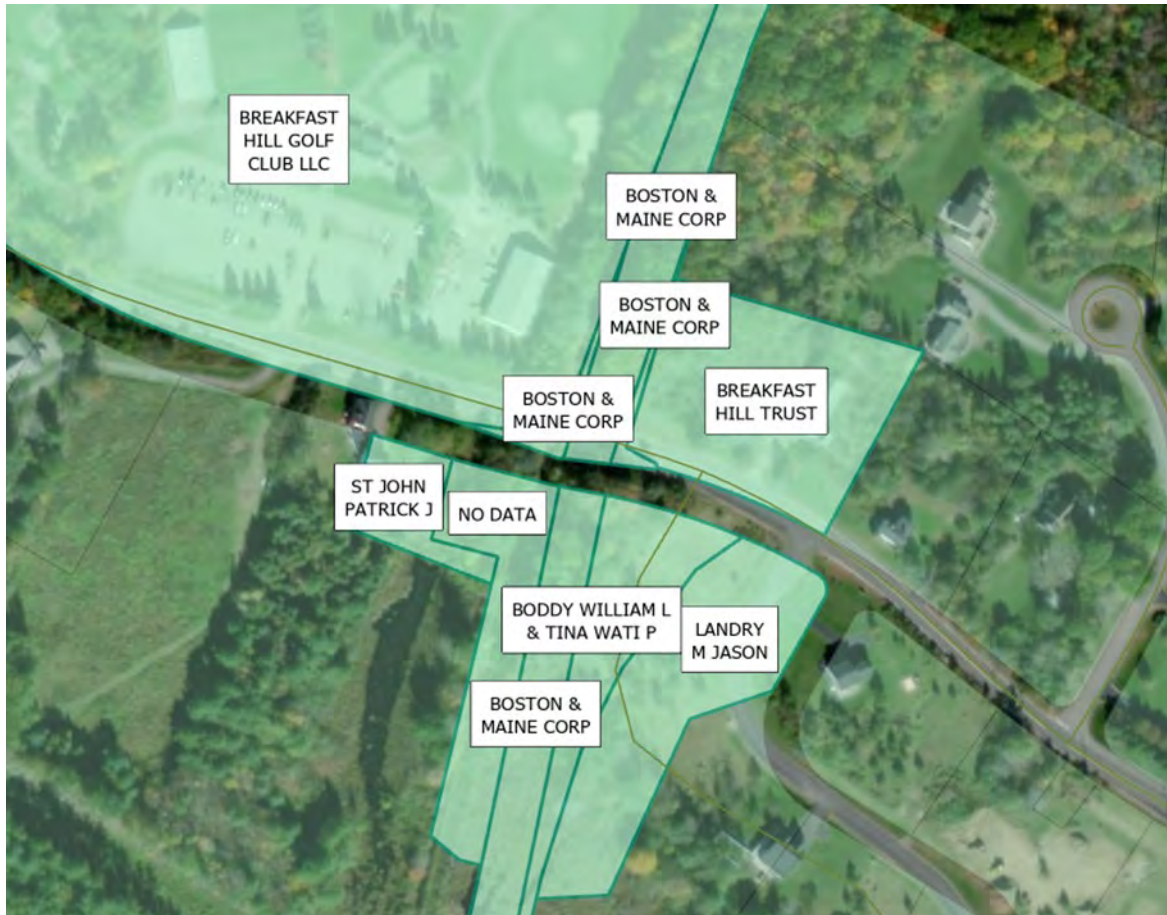
South to
Hampton

Banfield Road

Site Elements Banfield Road Pavilion and Restrooms



Crossings with Trailhead Parking Potential



Site: Breakfast Hill Road

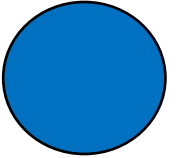
City: Greenland

Adjacent public land: Yes

Neighborhood Proximity: Yes

Business Proximity: Limited

In plans: No



Trail Access Design Concepts Breakfast Hill Road





North to
Portsmouth

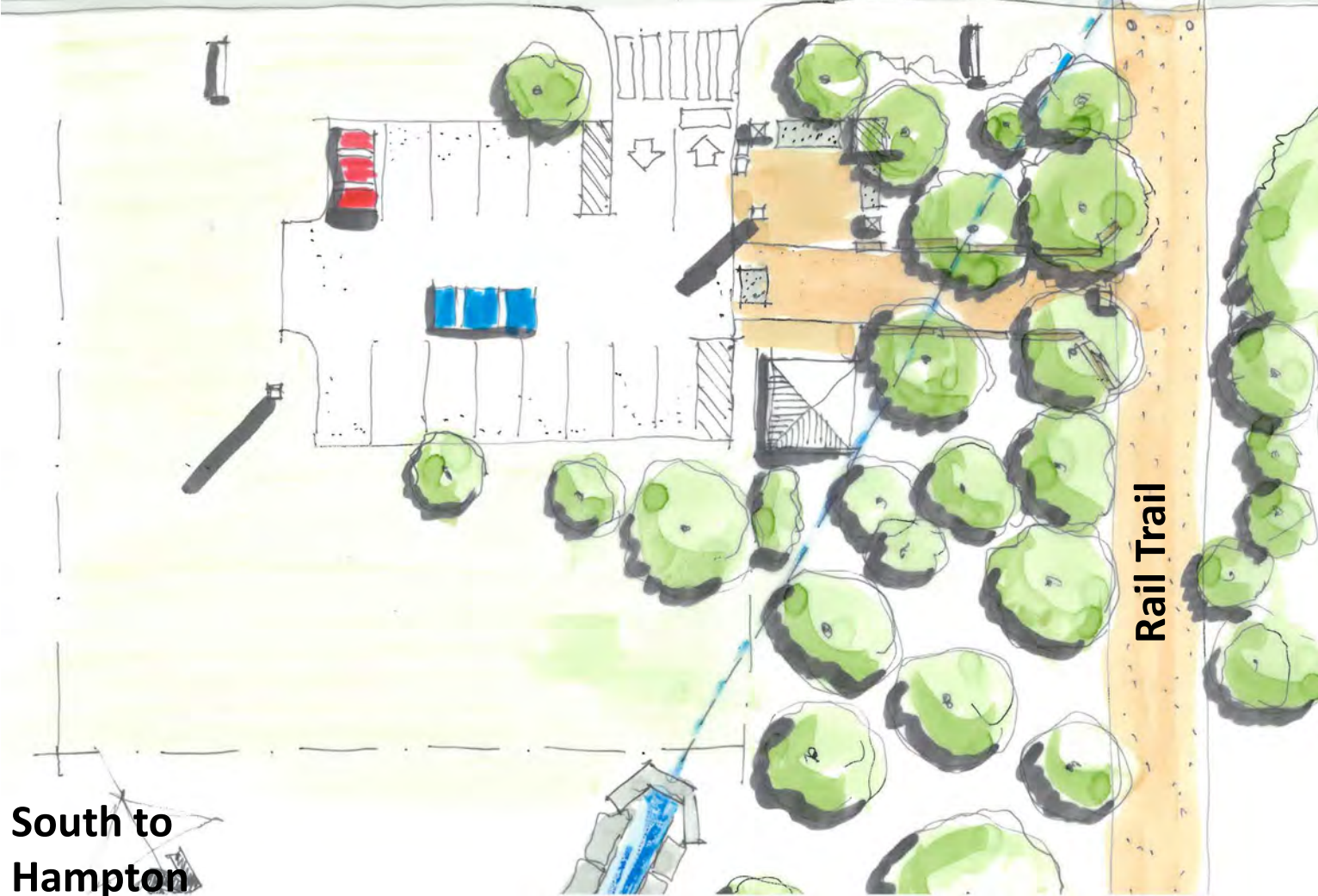
Trail Access Design Concepts Breakfast Hill Road North Side Option

South to
Hampton

Breakfast Hill Road

North to
Portsmouth

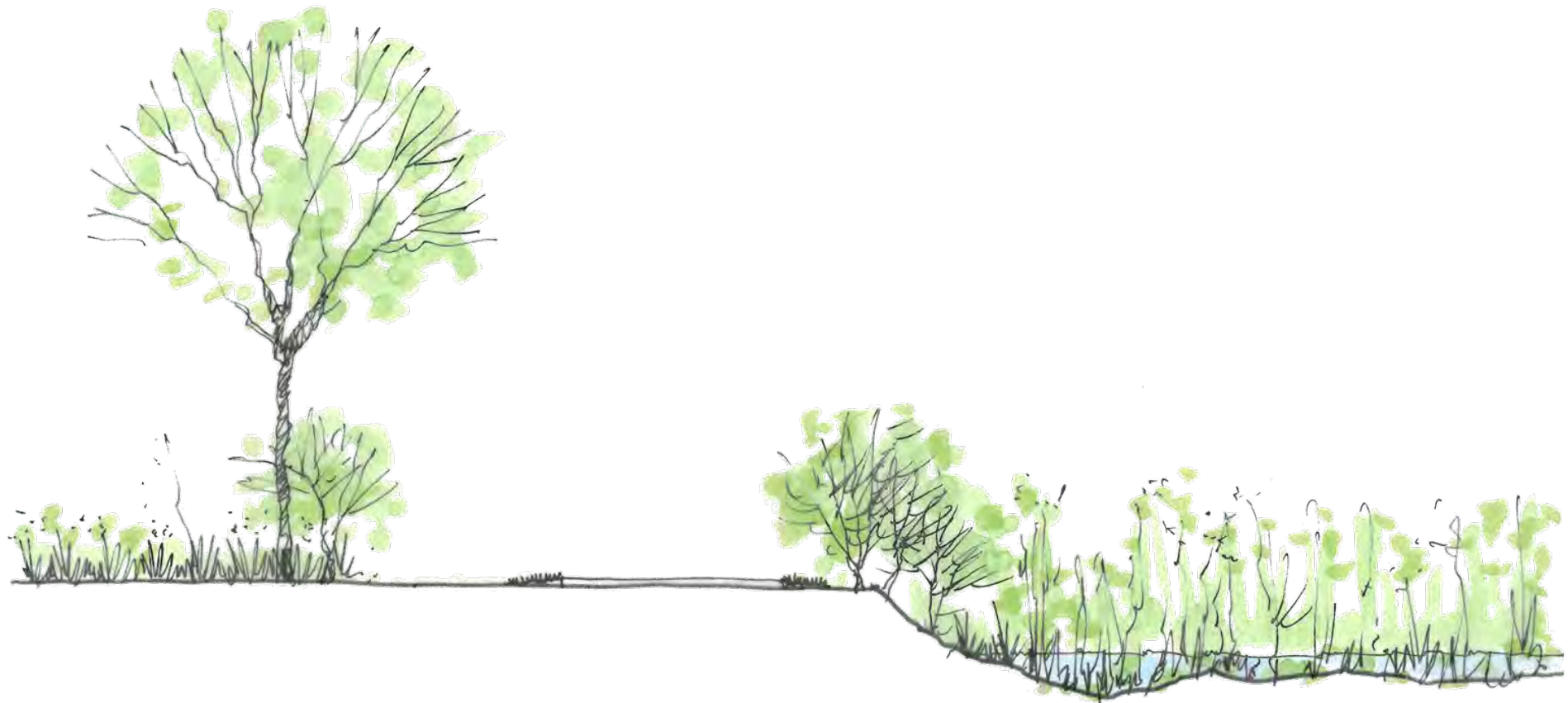
Breakfast Hill Road



South to
Hampton

Trail Access Design Concepts Breakfast Hill Road South Side Option

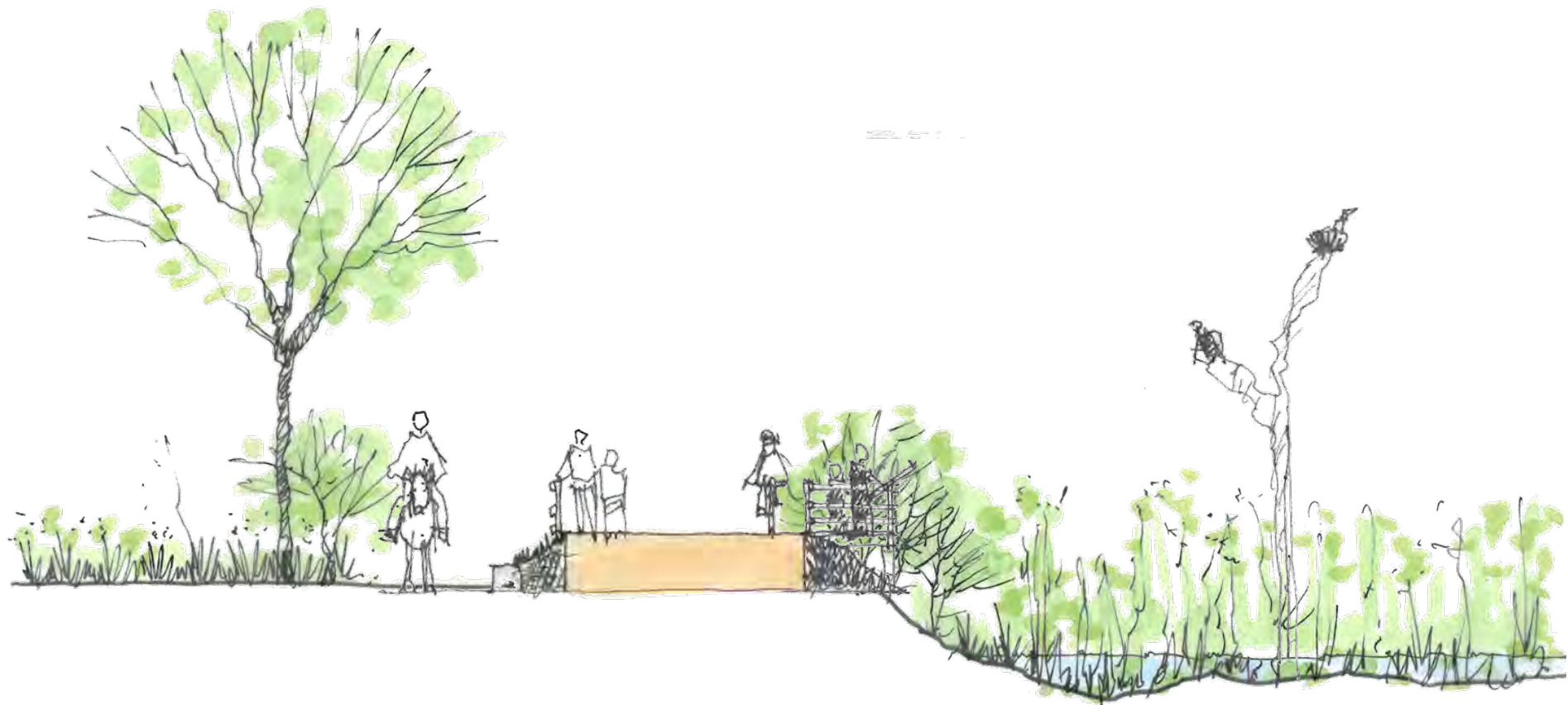
Marsh Overlook Concepts



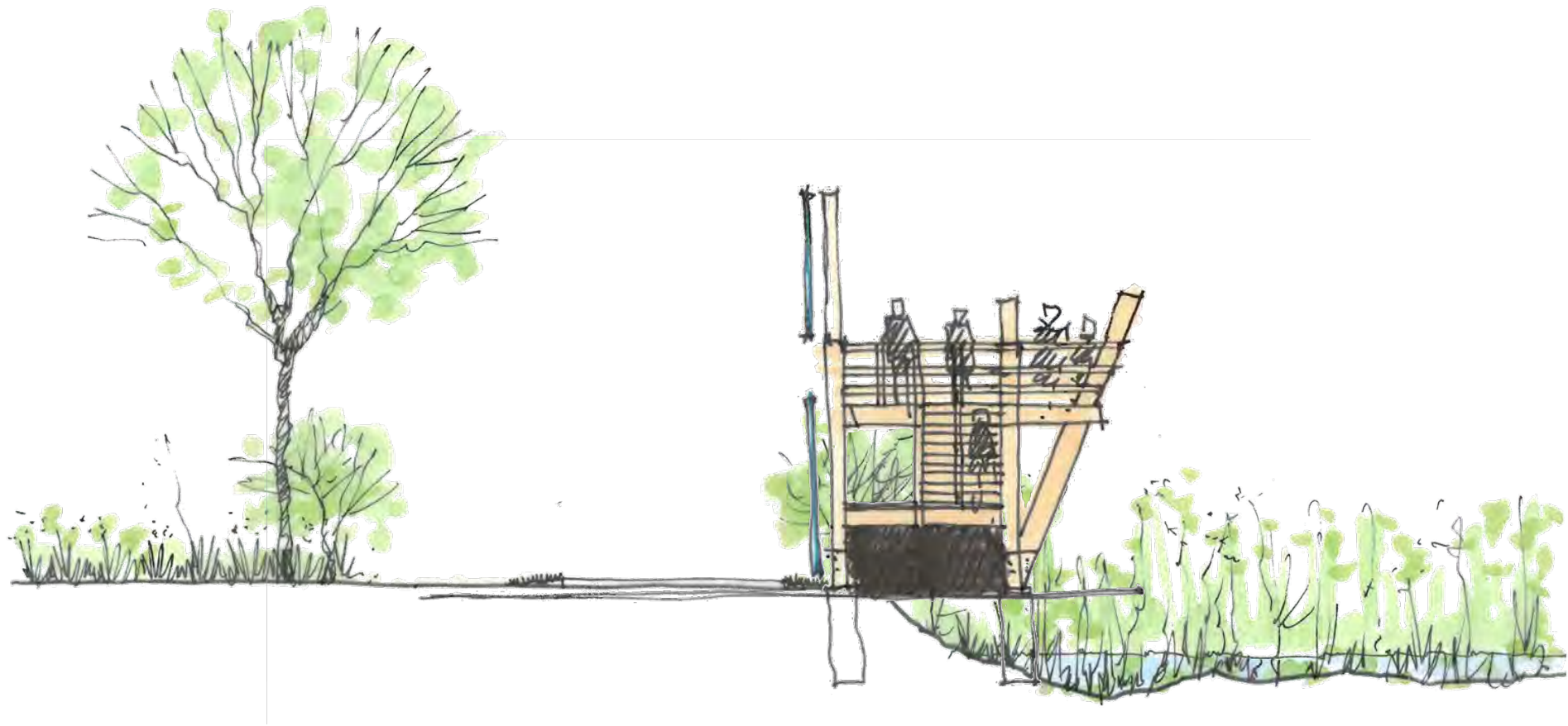
Marsh Overlook Concepts



Marsh Overlook Concepts



Marsh Overlook Concepts



NHSG Signage Family Concepts



Sample

Example 1
Front

Side

Back

Mile Marker
Wood Post

Example 2
Front

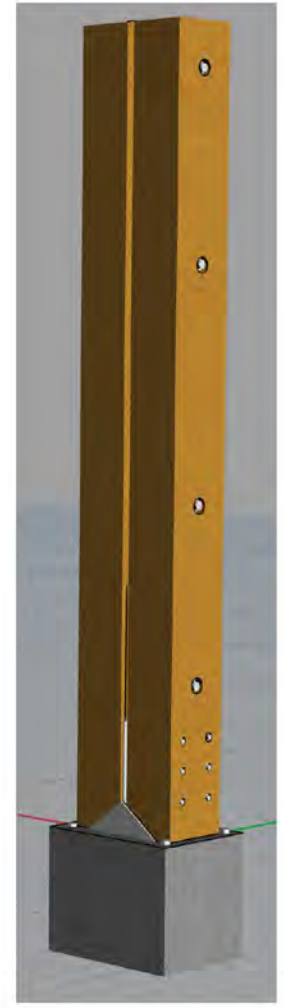
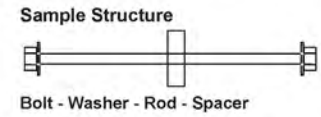
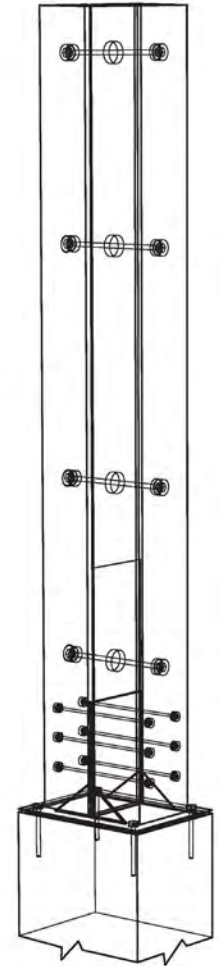
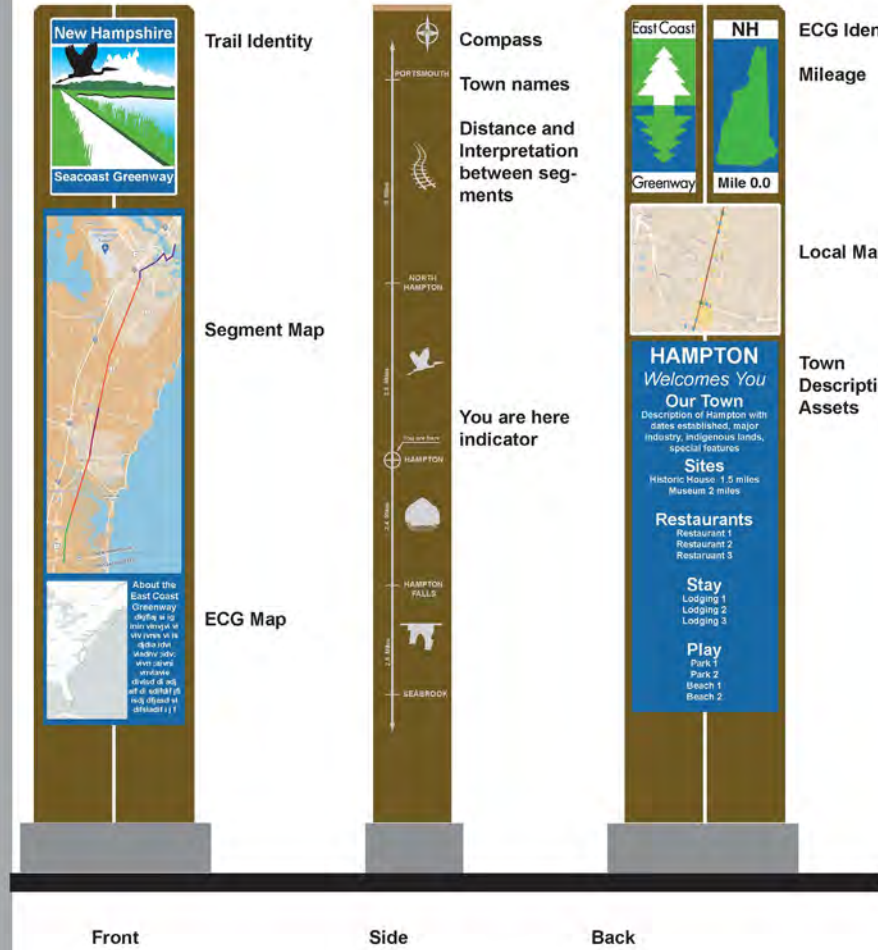
Side

Back

Mile Marker
Rail Road Track

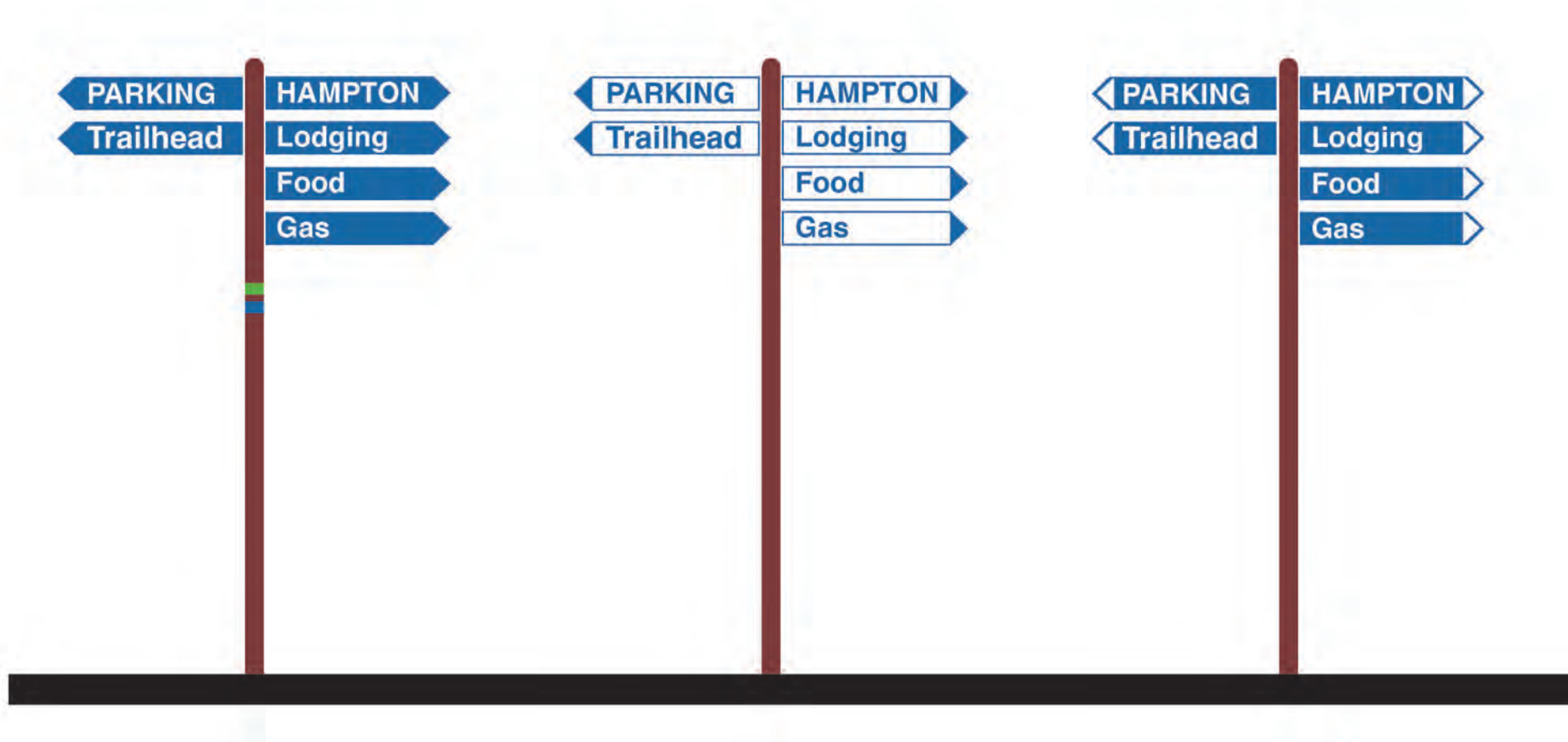
New Hampshire
Seacoast Greenway
Sign Family DRAFTS
Posts and Mile Markers

New Hampshire
Seacoast Greenway
Sign Family DRAFTS
Posts and Mile Markers
Footing Structures

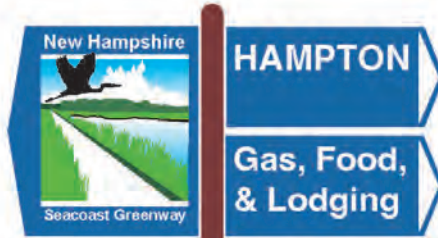


NHSG Signage Family Concepts

NHSG Signage Family Concepts

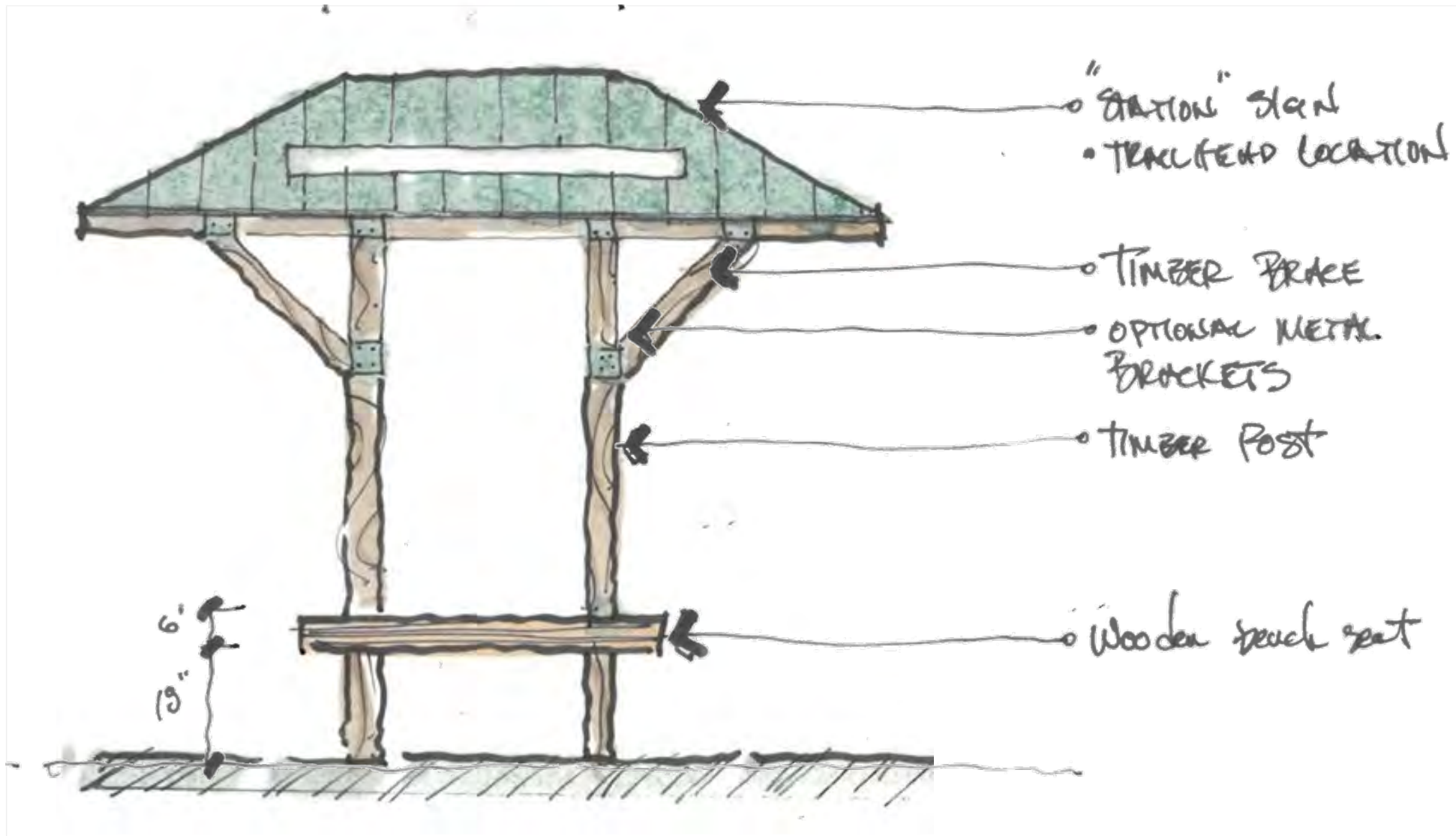


NHSG Signage Family Concepts

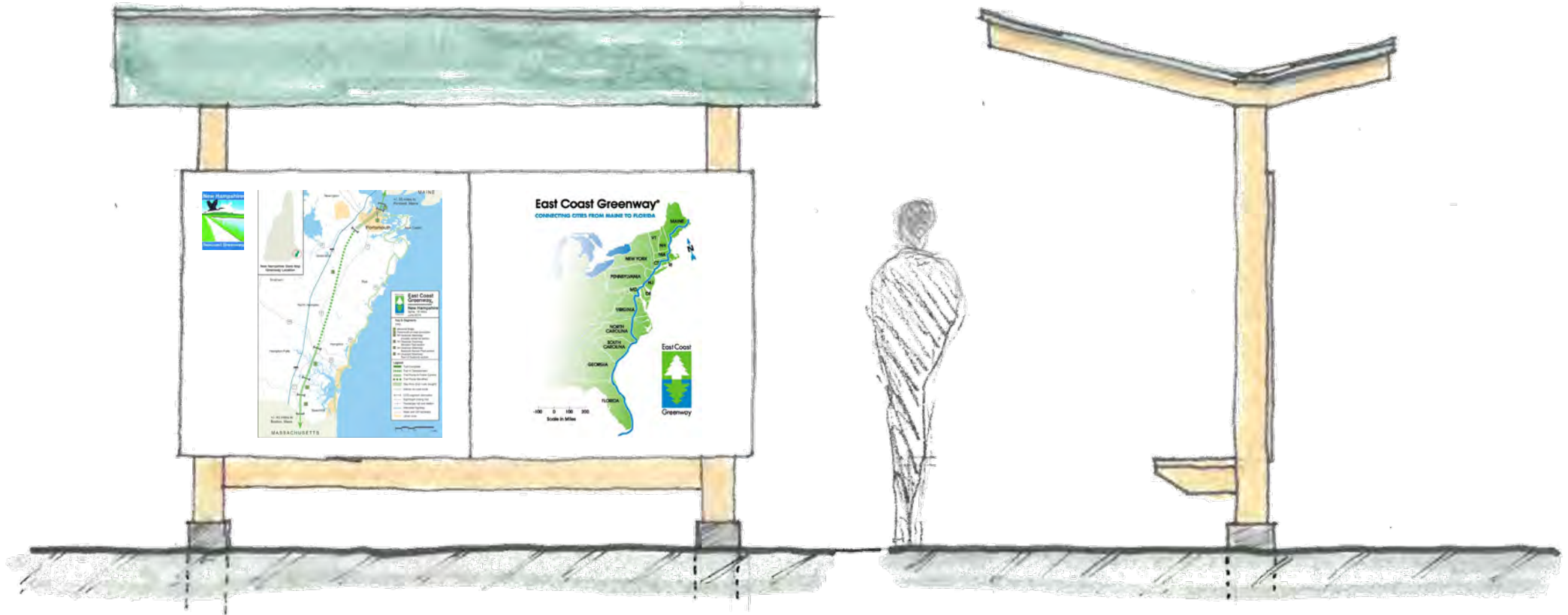


New Hampshire
Seacoast Greenway
Sign Family DRAFTS
Banner Style

Trailside Shelter



Trailhead Kiosk





t e r r a f i r m a
landscape architecture



D. R. HORNE & COMPANY



Workshop Design Teams

- Bob White, GPI
- Ken Ferrer, Placework
- Terrence Parker, Terra Firma
- Will Gatchell, Harriman
- Howard Snyder, Harriman
- Paul Jackson, Architect
- Nancy Kanner, Kanner Graphic Design
- Colleen Wolfe, D.R. Horne & Company
- Jeff Brubaker, Planner & Trail Advocate
- Tony Ciolfi, TEC
- Julie Isbill, National Park Service
- Cindi Hron, National Park Service
- Mallory Zink, National Park Service