



Connect to Protect Workshop: Rye's Role in Protecting the Coastal Watershed



October 24, 2023

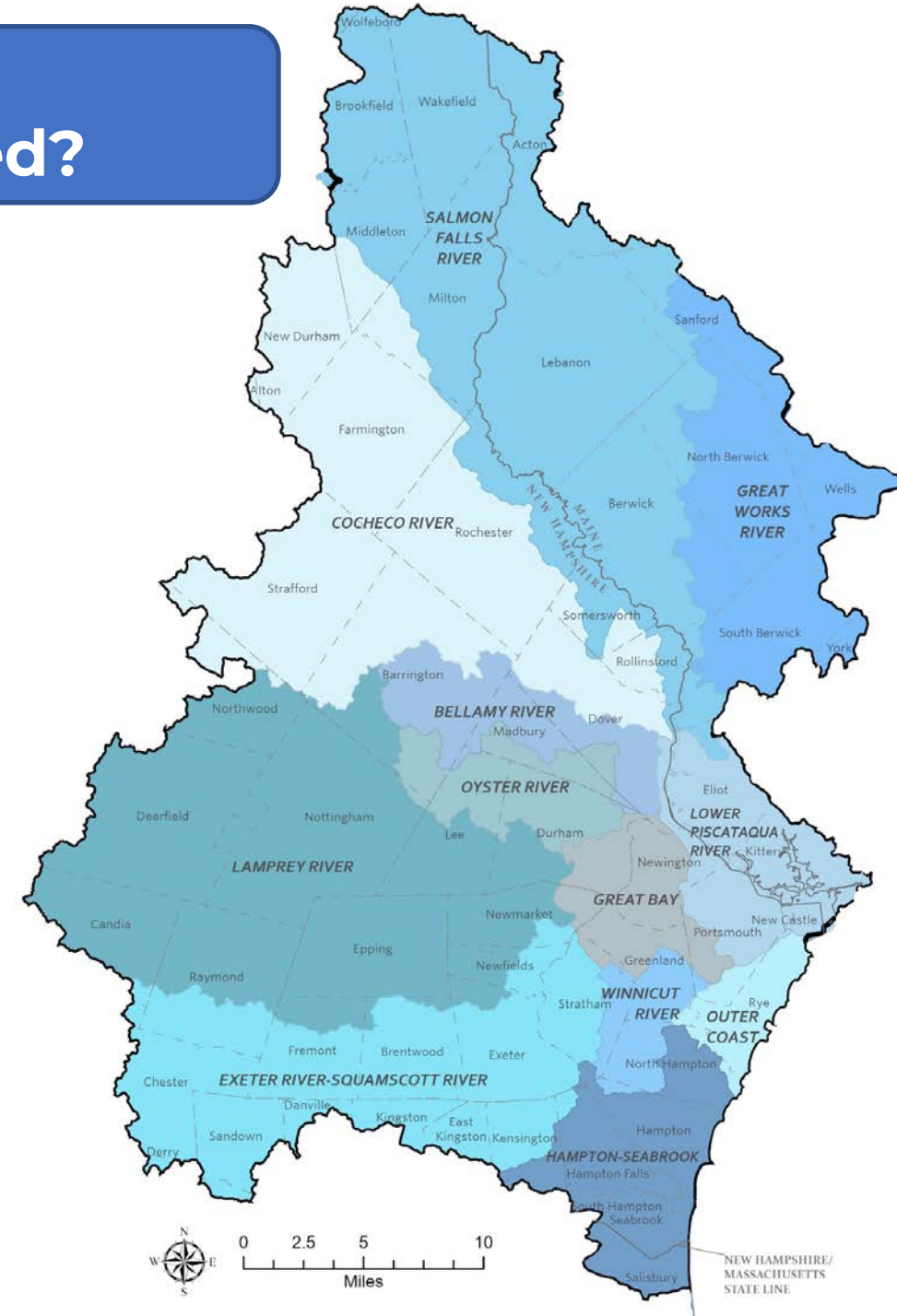


Jerry Monkman

Workshop Agenda

- Introduction to the *NH Coastal Watershed Conservation Plan*
- Actions – What the town is doing
- Actions – Ideas for what community members can do
- Map activity and discussion

What is the Coastal Watershed?










Map 2

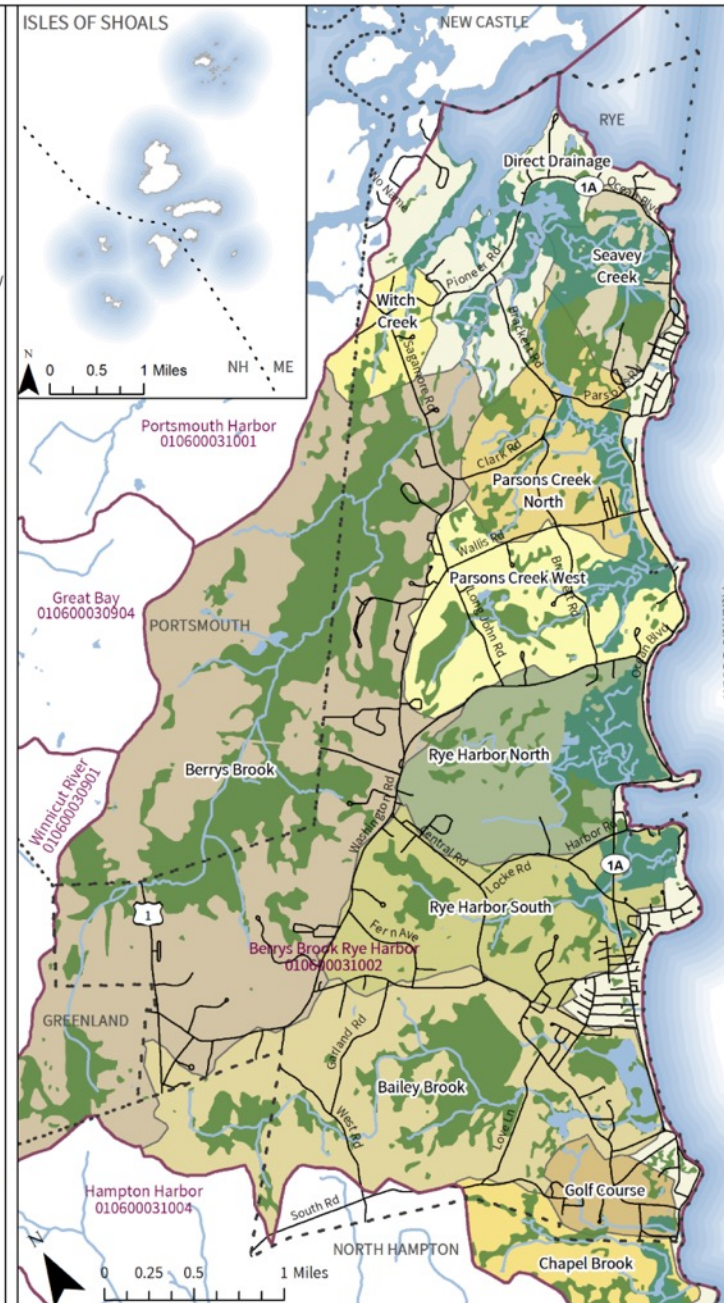
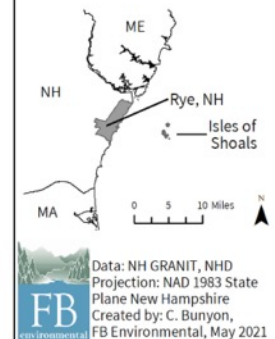
NATURAL RESOURCE INVENTORY

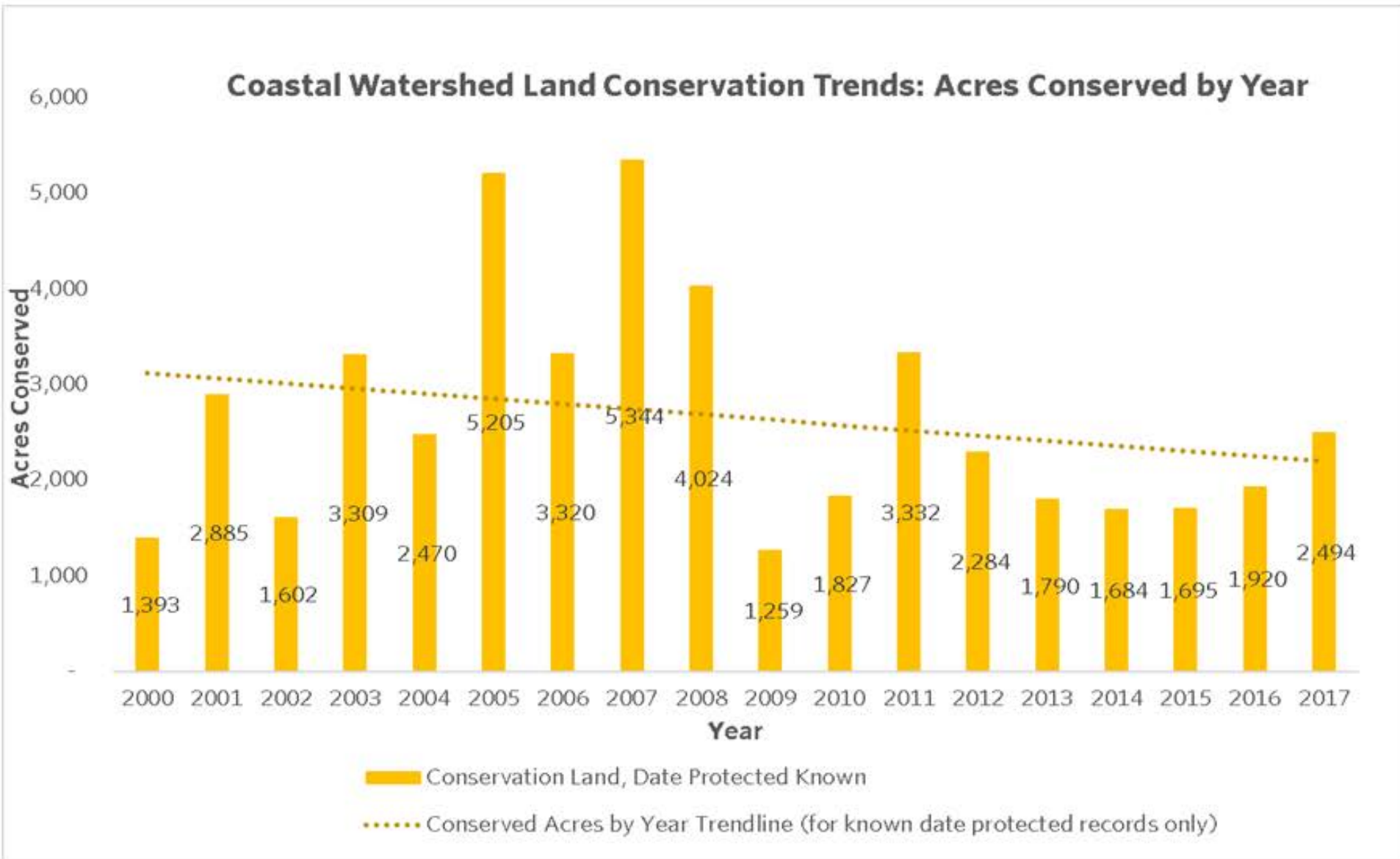
TOWN OF RYE, NH

Watershed Boundaries and Wetlands

-  Town Boundary
-  HUC 12 Watershed Boundary
-  Surface Water
-  Stream/River
-  Road
-  Freshwater Wetland
-  Saltwater Wetland

Note: Created by FBE, these sub-watersheds were approximated based on digital elevation models, NHD flowlines, road topography, and GIS analyses. Sub-watershed boundaries are for planning purposes only and should be confirmed in person if further analyses are required.







The Plan can help with:

- Aligning efforts to protect high priority lands
- Prioritizing conservation projects
- Informing municipal land use planning and regulations
- Reviewing development projects

The Land Conservation Plan For New Hampshire's Coastal Watersheds



August 2006

Land Conservation Priorities for the Protection of Coastal Water Resources:

*A Supplement to The Land Conservation Plan for New
Hampshire's Coastal Watersheds*

TECHNICAL REPORT

Prepared By



Authors: Peter Steckler, Joanne Glode, & Shea Flanagan (The Nature Conservancy)

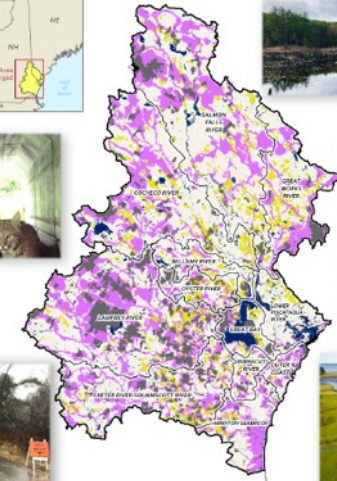
Editor: David Patrick (The Nature Conservancy)

Great Bay Resource Protection Partnership Coastal Conservation Plan Advisory Team:

Elizabeth Baker (TNC), Dea Brickner-Wood (GBRPP), Gregg Capoross (TPL), Rich Cook (NHFG), Steve Couture (NHCP), Joanne Glode (TNC), Lisa Graichen (GBNERR), Amy Hudnor (NHDES), Duane Hyde (SELT), Vanessa Jones (NHA), Mark Kern (USEPA), Pierce Laskey-Rigrod (NHDES), Jacqueline LeClair (USEPA), Jan McClure (TNC), David Patrick (TNC), Bill Peterson (USFWS), Cory Riley (GBNERR), Rachel Rouillard (PREP), Michelle Daley Shattuck (UNH), Paul Stacey (GBNERR), Peter Steckler, Rachel Stevens (GBNERR), Alison Watts (UNH), Ryan Young (SPNHF), Mark Zankel (TNC)

July 15, 2016

New Hampshire's Coastal Watershed Conservation Plan 2021 UPDATE

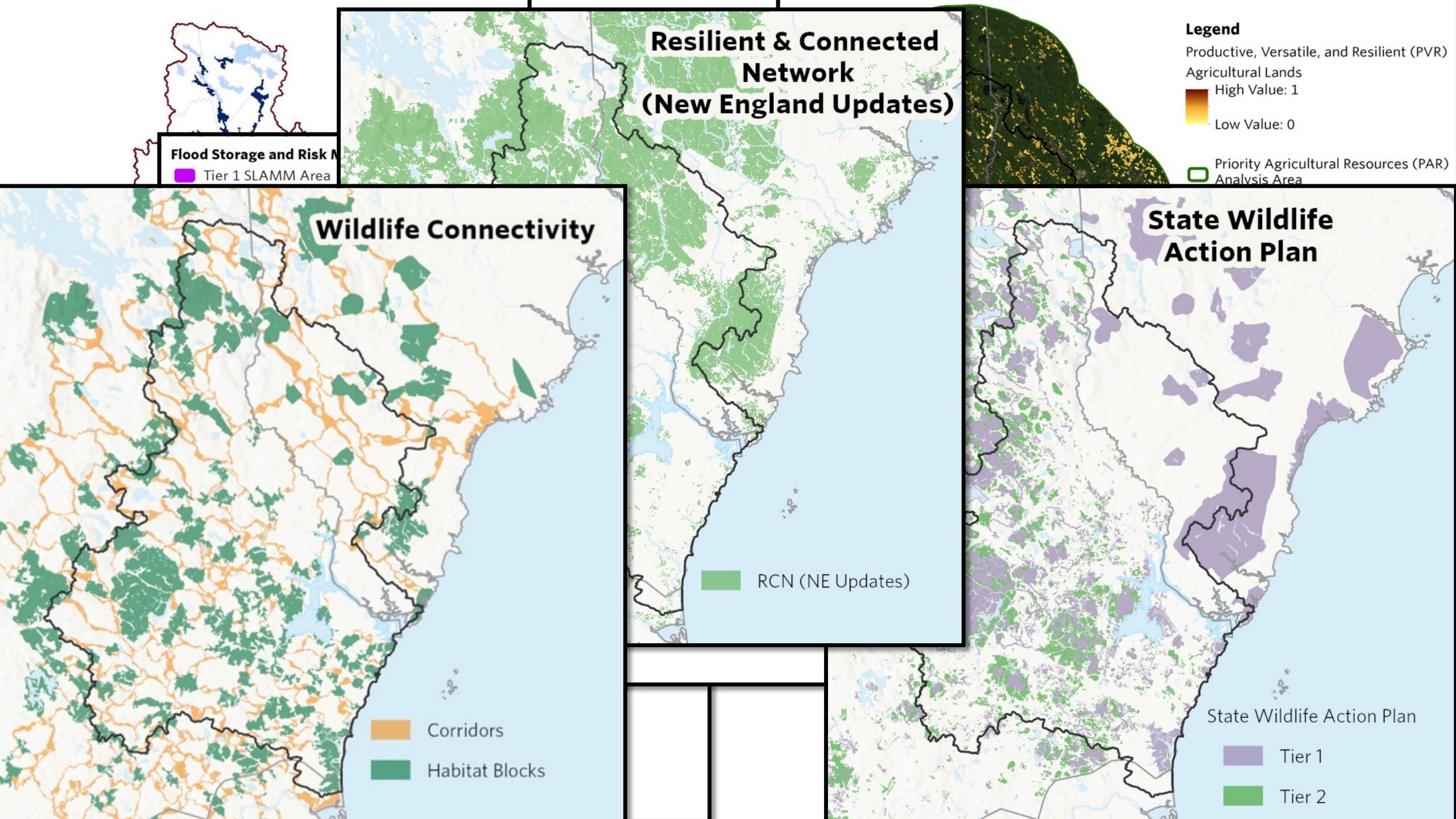


Final Report: 6/30/2021

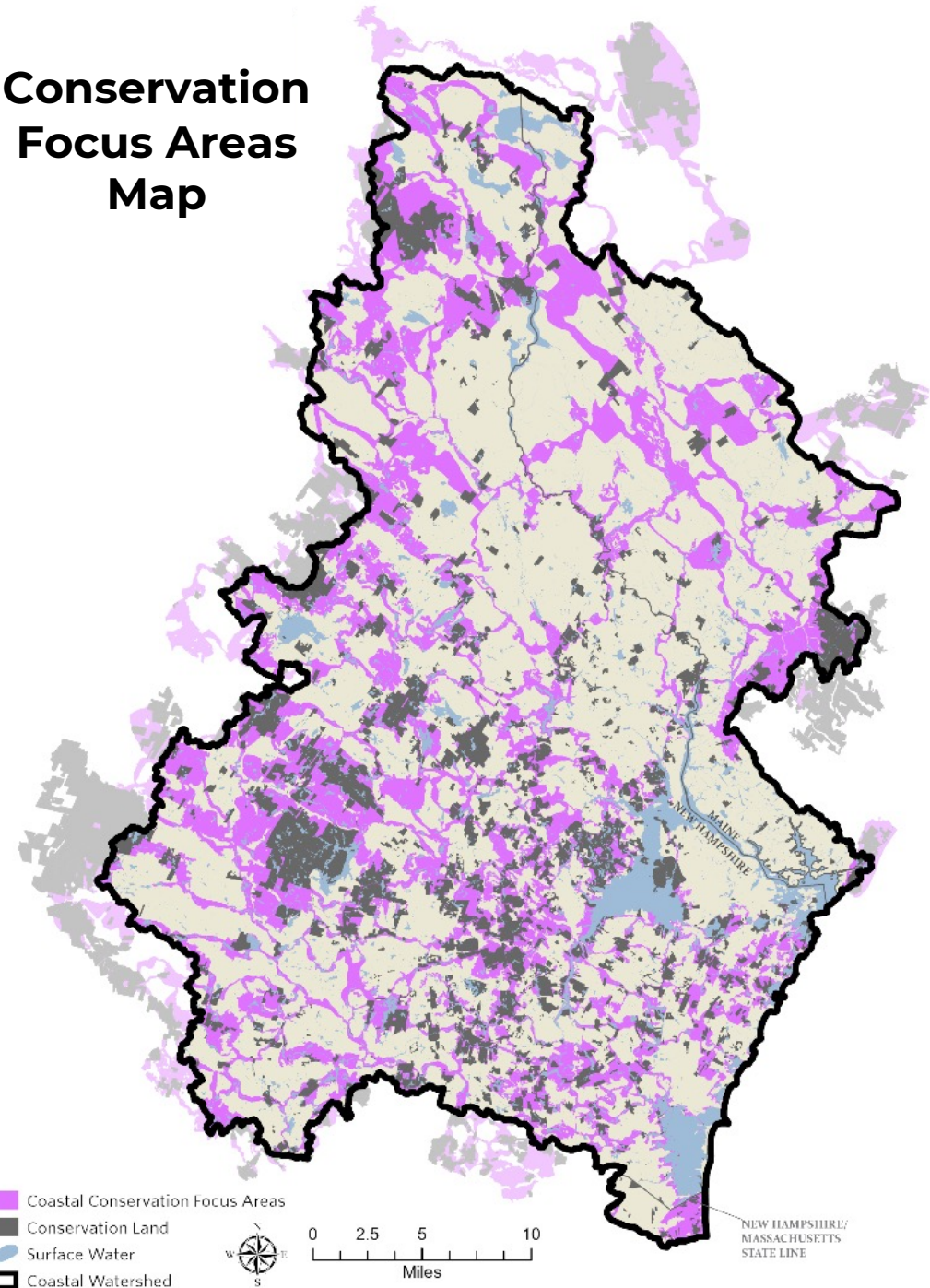
Authors: Peter Steckler and Anna Ormiston



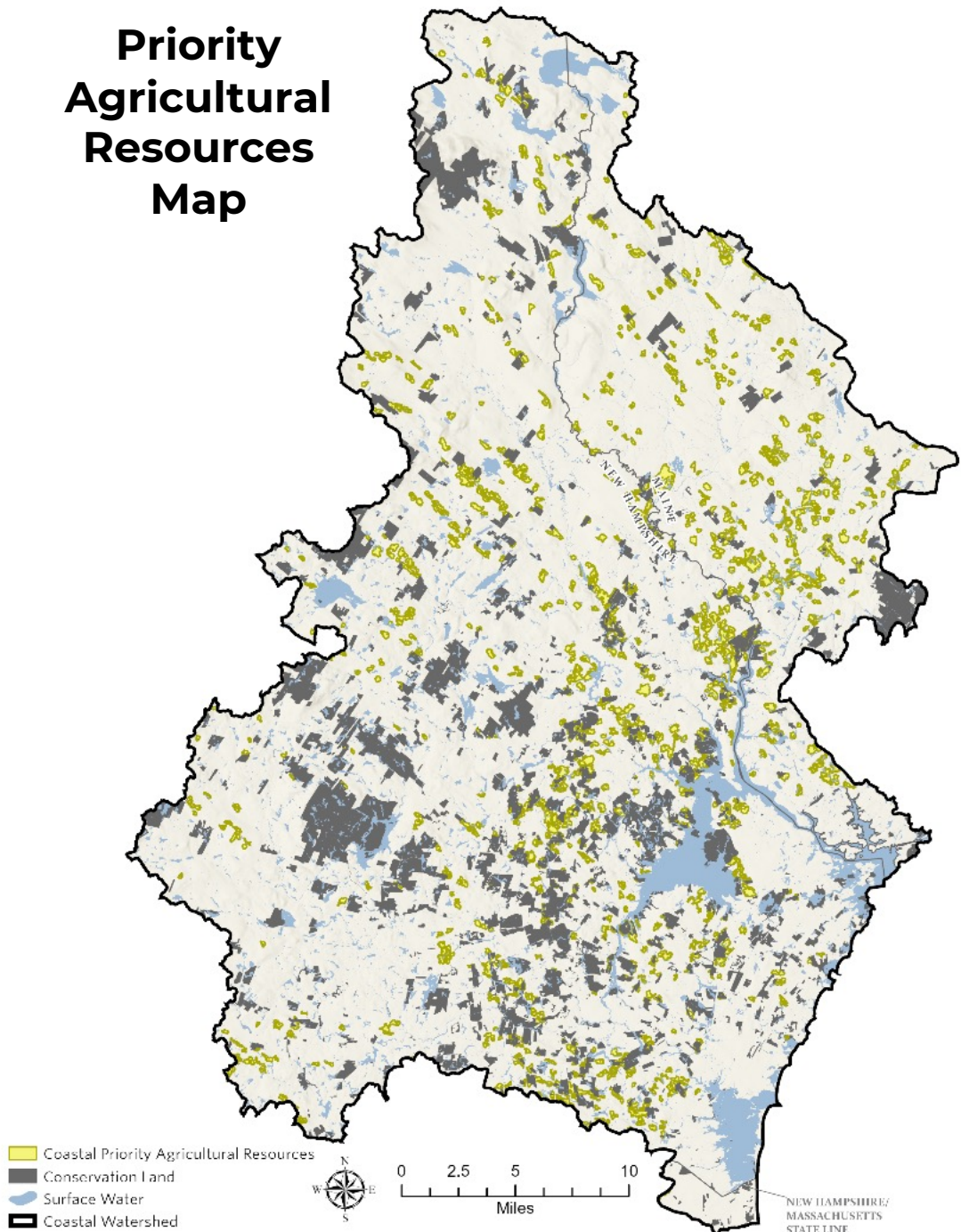
Development of the Coastal Watershed Conservation Plan



**Conservation
Focus Areas
Map**



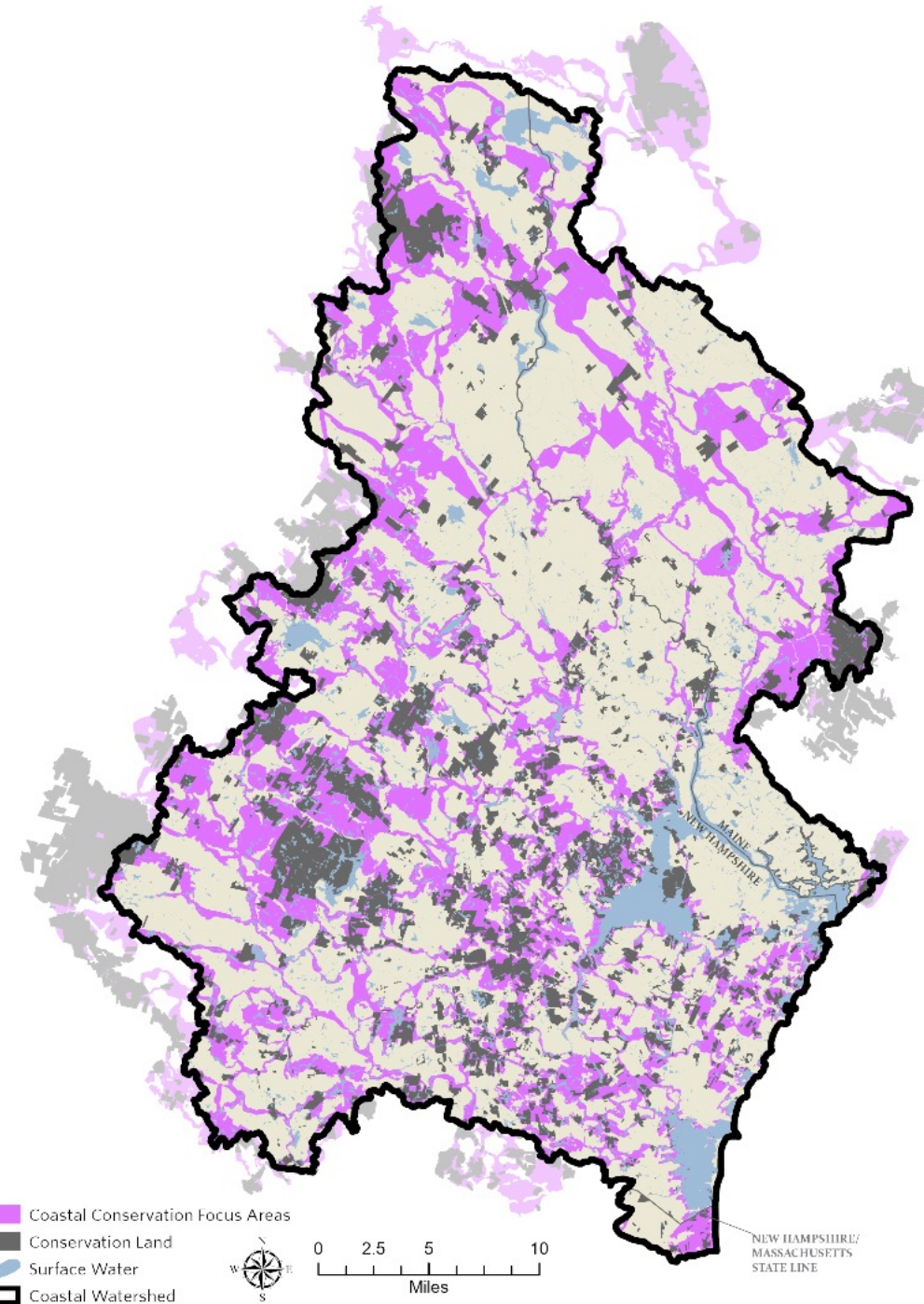
**Priority
Agricultural
Resources
Map**



Coastal Conservation Focus Areas

- Cover 38.2% of the watershed
- **~30% of these focus areas (75,165 acres) have been conserved**
- **~70% of these focus areas (170,813 acres) remain vulnerable or unprotected**

Photo courtesy Jerry Monkman | EcoPhotography



Conservation Focus Areas

Wildlife and Habitat

- Critical habitats
- Species of greatest conservation need
- Wildlife corridors and habitat blocks
- Resilient and Connected Network

Water Resources

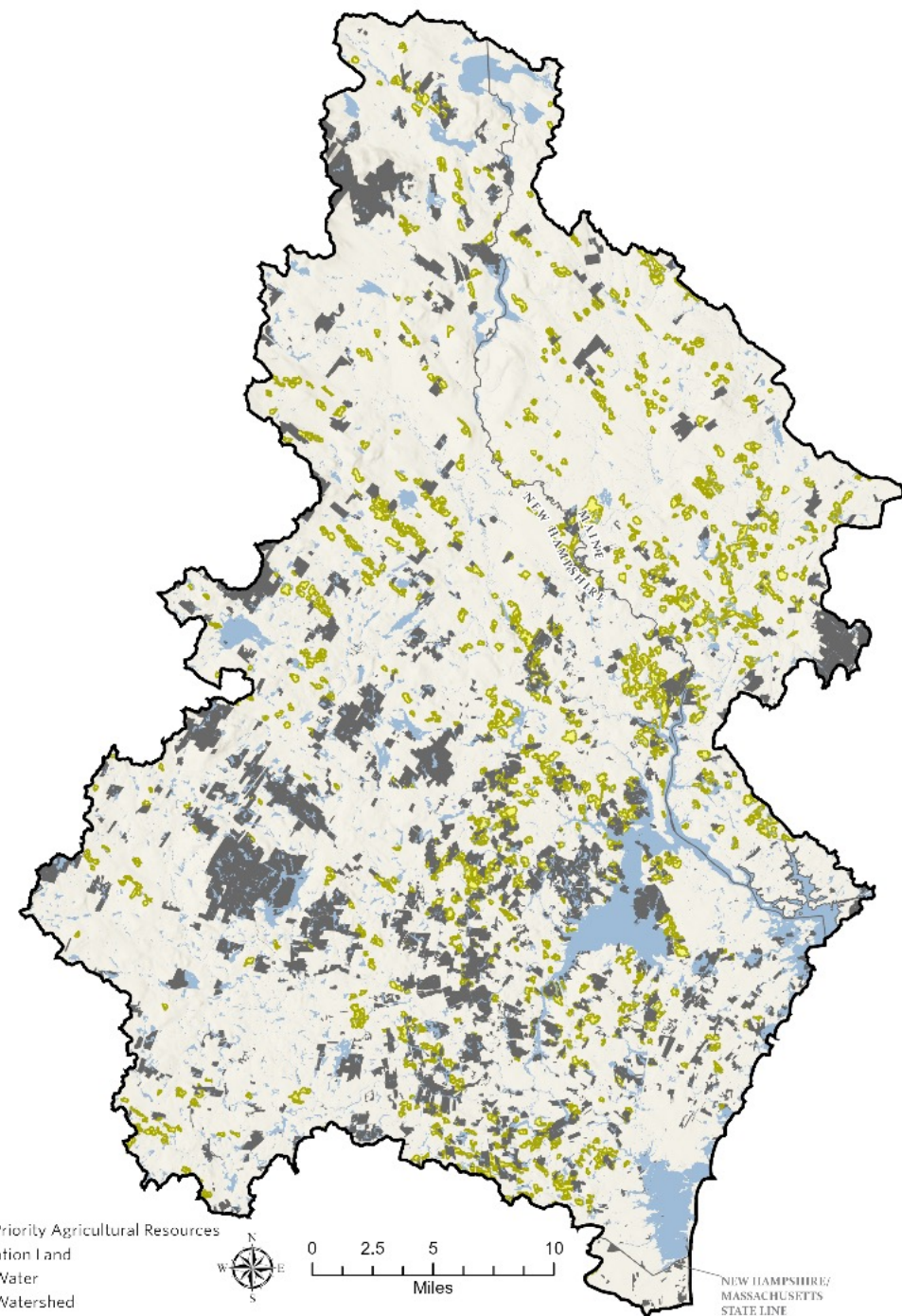
- Source water protection (public water supply)

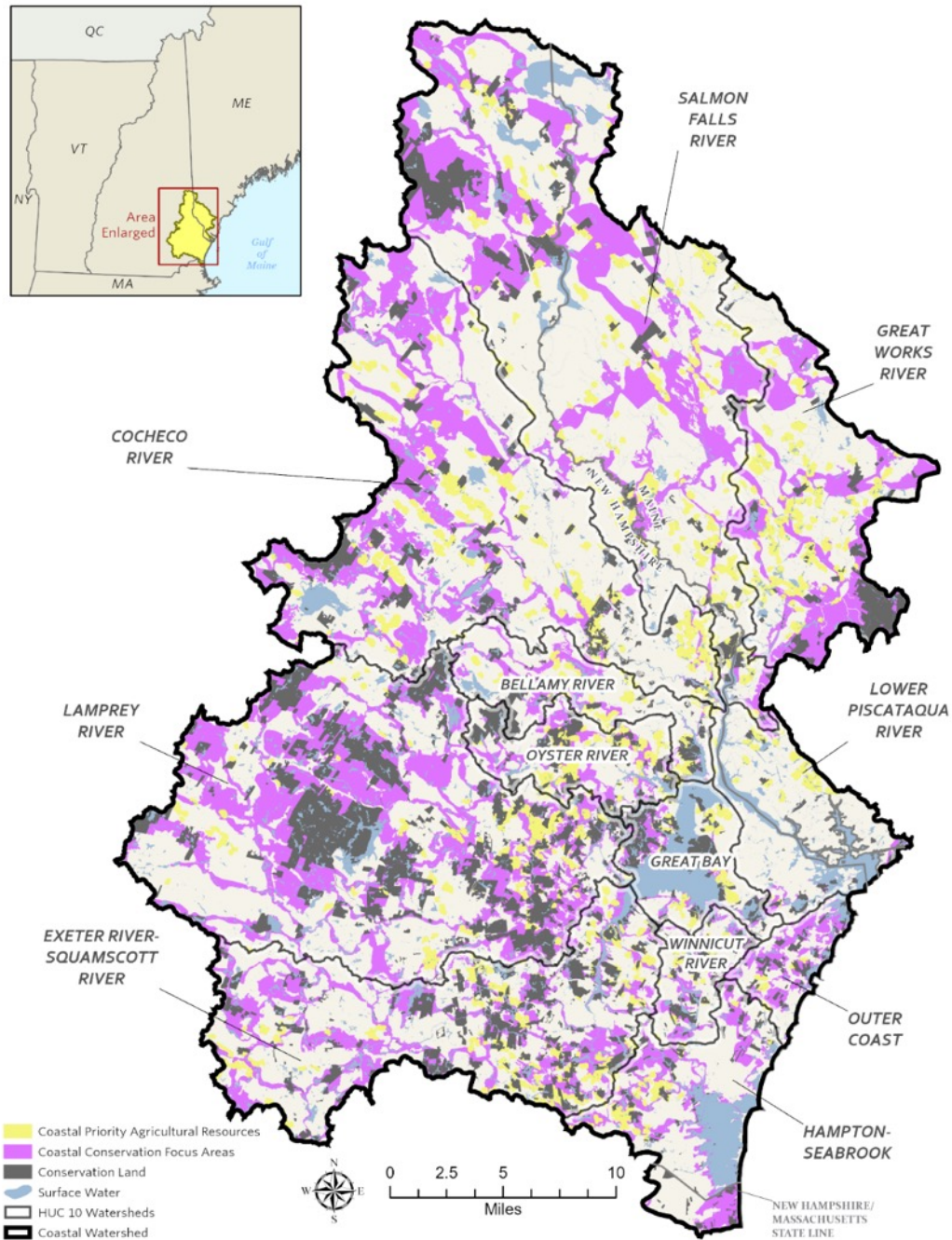
Climate Adaptation

- Resilient tidal marshes
- Flood storage and risk mitigation

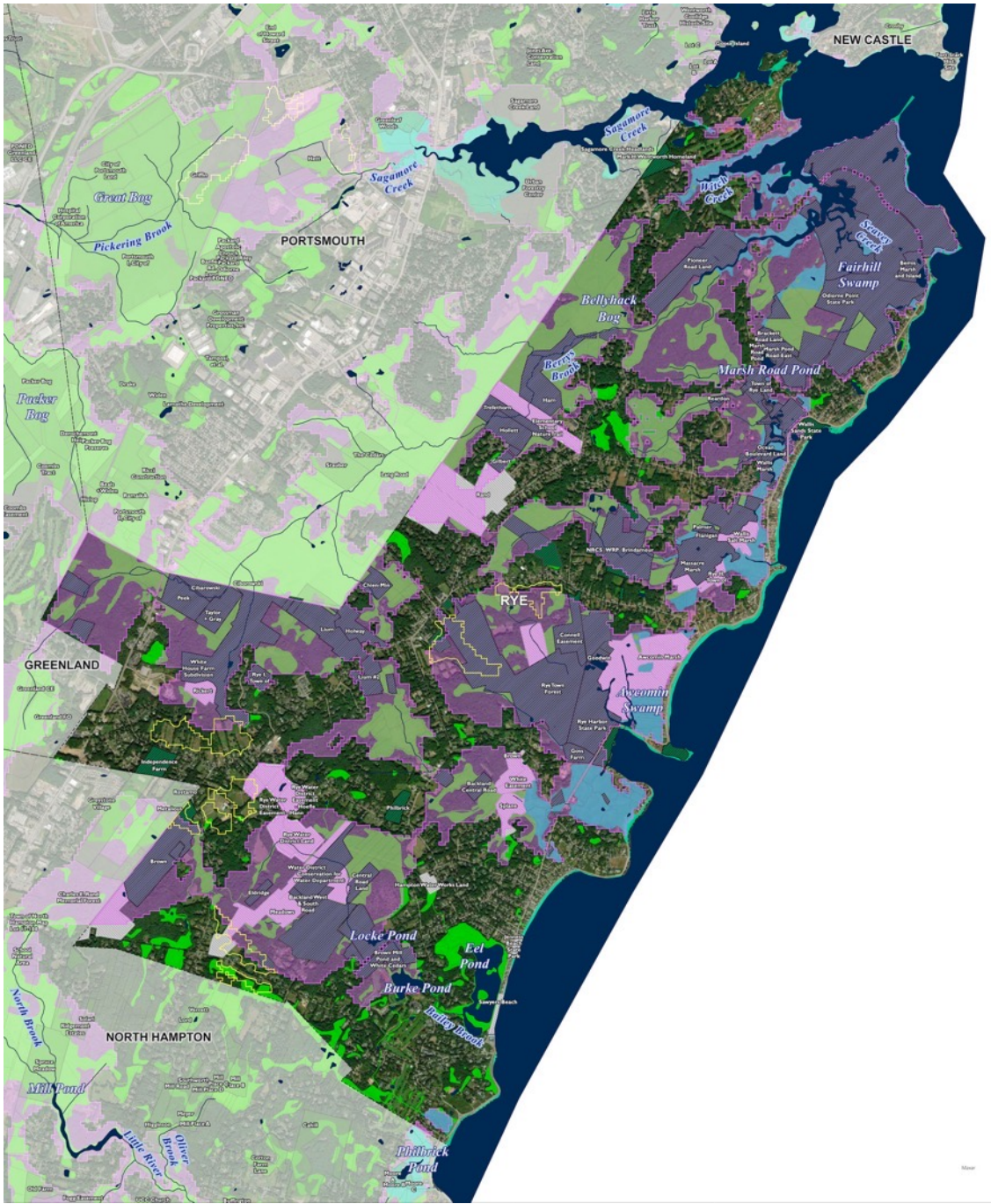
Priority Agricultural Resources

- Cover 4.7% of the watershed
- **20% of these priority resources** (6,344 acres) **have been conserved**
- **80% of these priority resources** (26,218 acres) **vulnerable or unprotected**






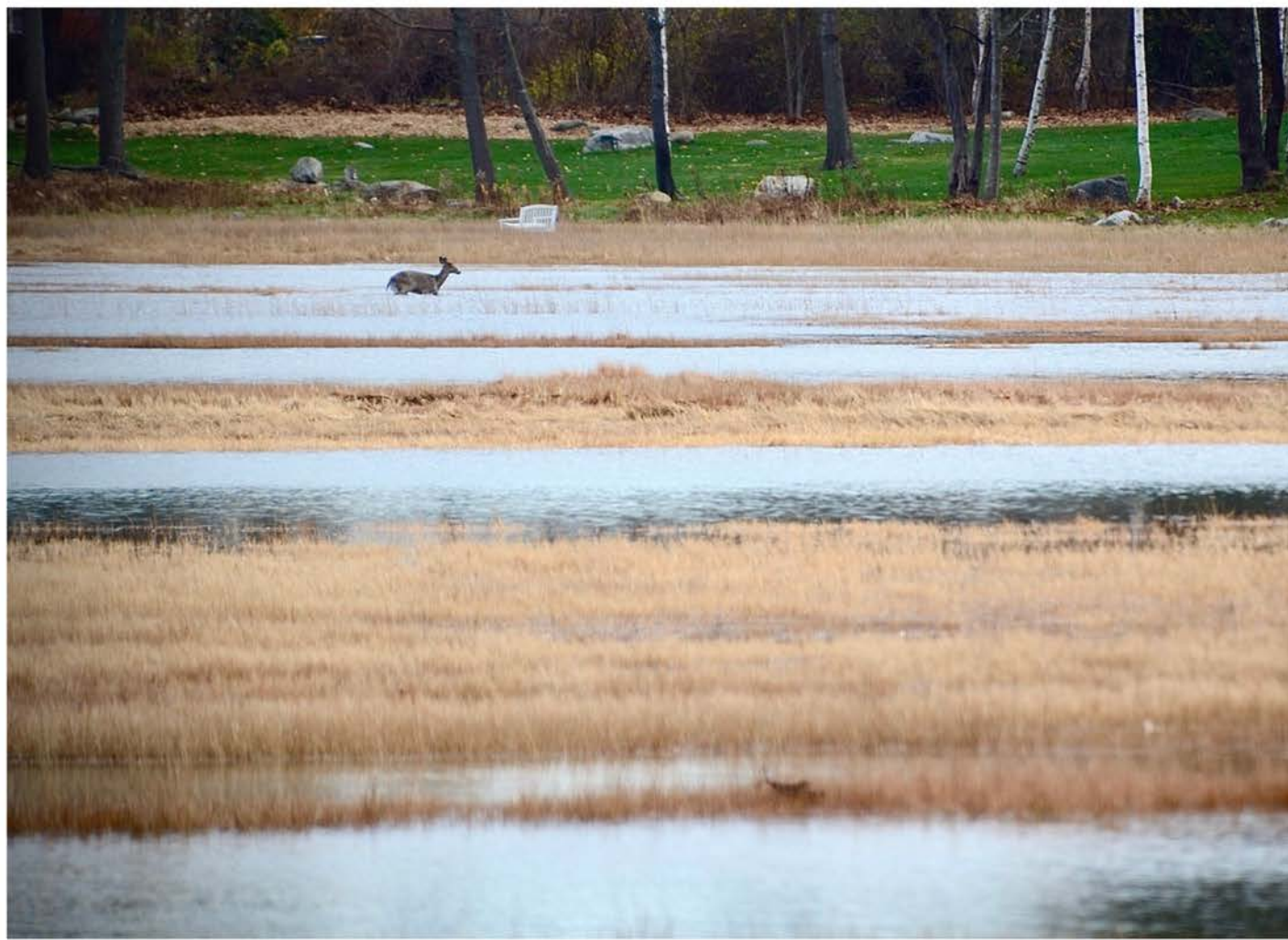


Jerry Monkman



Legend

-  Coastal Conservation Focus Areas
-  Coastal Priority Agricultural Resources
-  Conservation Land
-  Public/Other Land
-  Parcels
-  Municipal Boundary Municipal Boundary
-  Streams/Rivers
-  Estuary
-  Freshwater Wetland
-  Open Water



ADVISORY

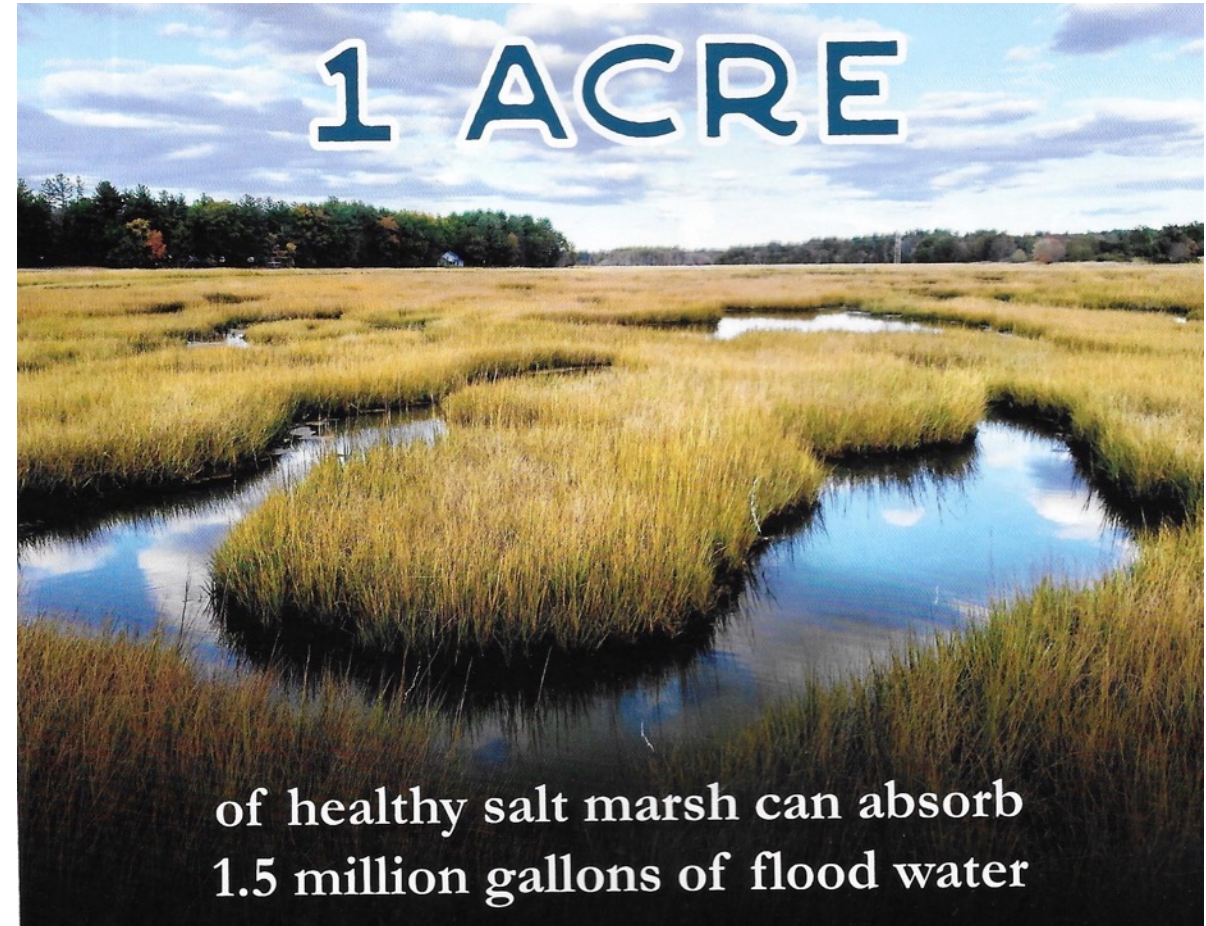
THIS WATER IS KNOWN TO HAVE
HIGH LEVELS OF BACTERIA AND
IS CURRENTLY NOT SUITABLE
FOR WADING, SWIMMING, OR
ANY FORM OF RECREATING

DO NOT INGEST THE WATER



Scan here for
more details

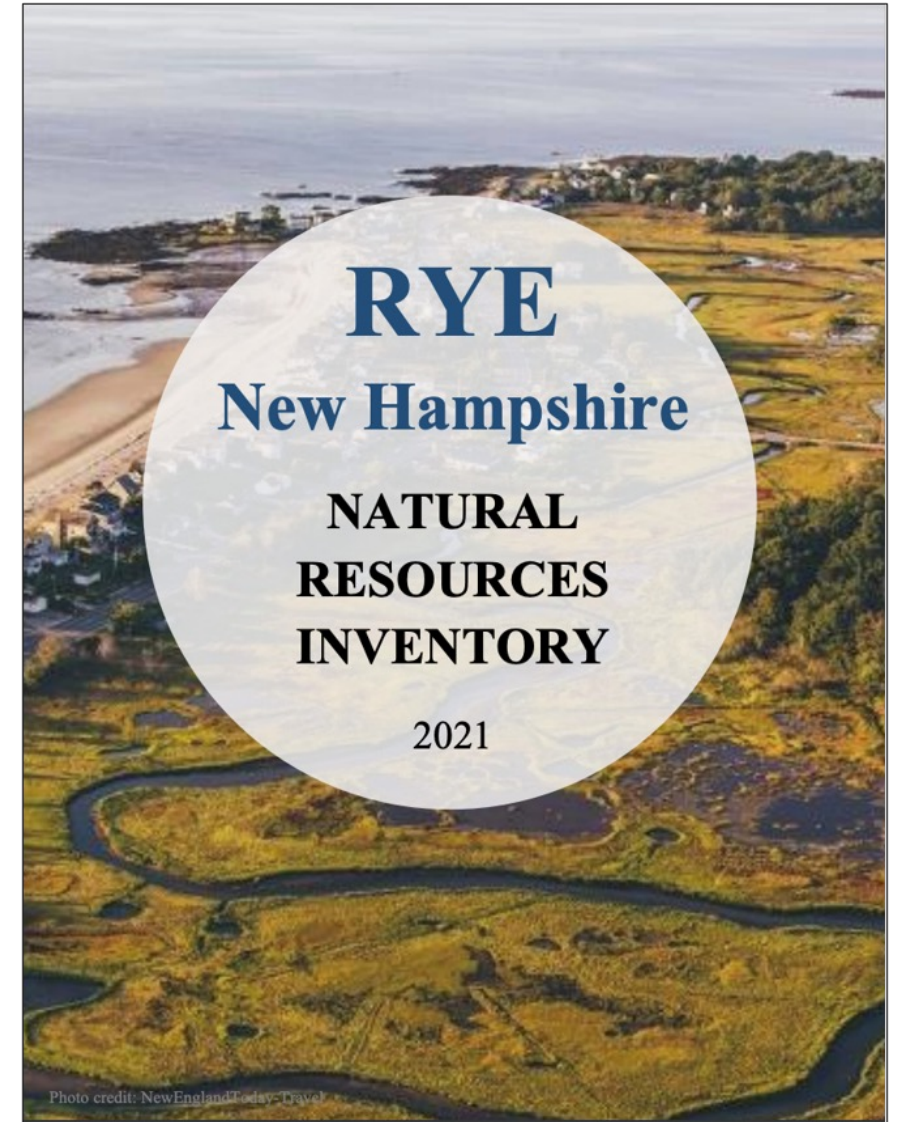




Great Bay Matters (2021)

Actions – What the town is doing

- Conservation efforts
- Natural Resource Inventory
- Recent zoning ordinance updates
- Conservation checklist
- Buildout analysis
- Ongoing efforts and opportunities to engage – Master Plan update / housing work












Wetland buffers

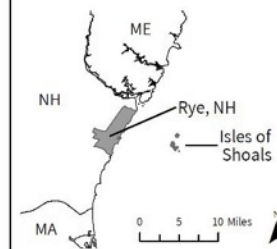


NATURAL RESOURCE INVENTORY

TOWN OF RYE, NH

Basemap

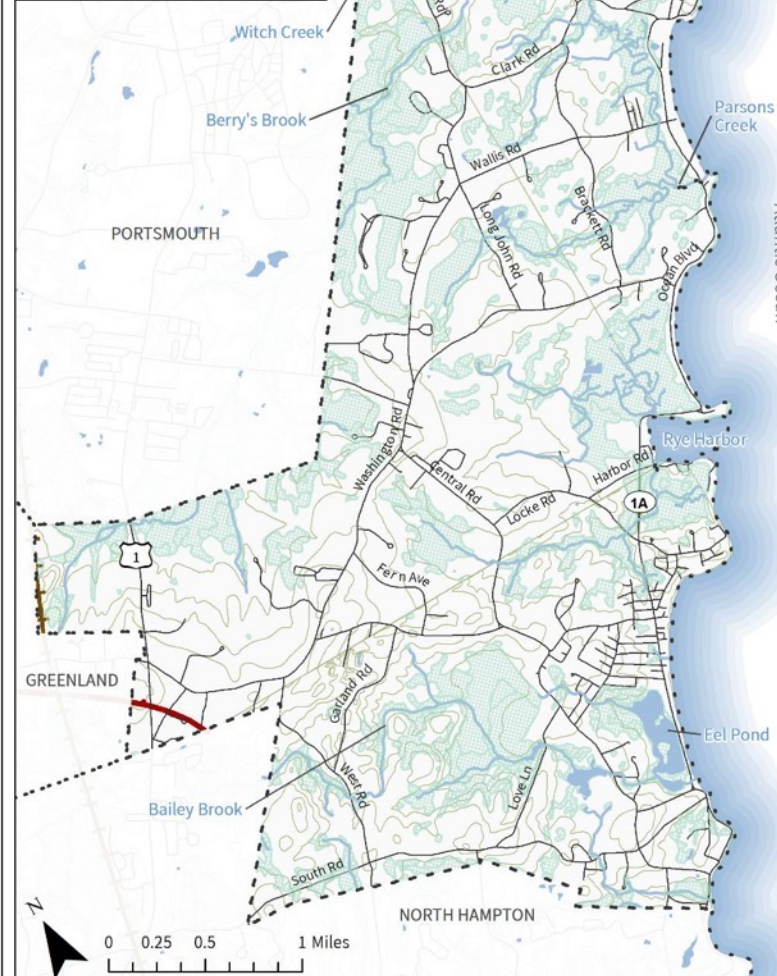
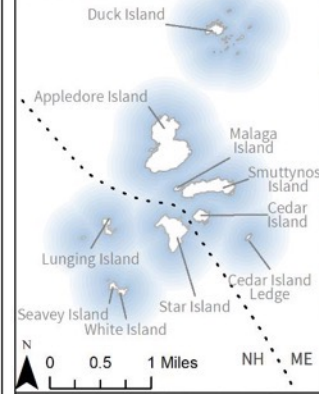
-  Town Boundary
-  Surface Water
-  Stream/River
-  Wetland
-  Contour (20ft)
-  Road
-  Railroad
-  Pipeline
-  Power Transmission Line



Data: NH GRANIT, NHD
Projection: NAD 1983 State
Plane New Hampshire
Created by: C. Bunyon,
FB Environmental, May 2021



ISLES OF SHOALS





Jim Raynes Forest



What YOU Can Do

Land Conservation

In Town

- Identify/map conservation priorities
- Partner with SELT
- Educate landowners on conservation options
- Place easements on town-owned lands

At Home

- Learn about conservation options
- Conserve your land
- Support land conservations efforts in town



Land Use Planning

In Town

- Use Coastal Plan maps in your work
- Incorporate information from NRI into Master Plan
- Review zoning ordinances, subdivision regulations, and overlay districts
- Incorporate climate change information into town documents/plans



Habitat & Backyard Management



In Town

- Develop (or update) management plans for town-owned land
- Map invasive plants & develop a strategy/plan
- Inventory trails & assess impacts to wildlife

At Home

- Less frequent mowing
- Plant native plants and remove invasives
- Use buffers where appropriate
- Use water responsibly
- Eliminate or minimize fertilizers

Outreach & Education

In Town

- Plan a series of educational events
- Develop and install educational signs
- Host volunteer workdays
- Develop communications strategy/plan

At Home

- Talk to your neighbors and friends
- Share your knowledge

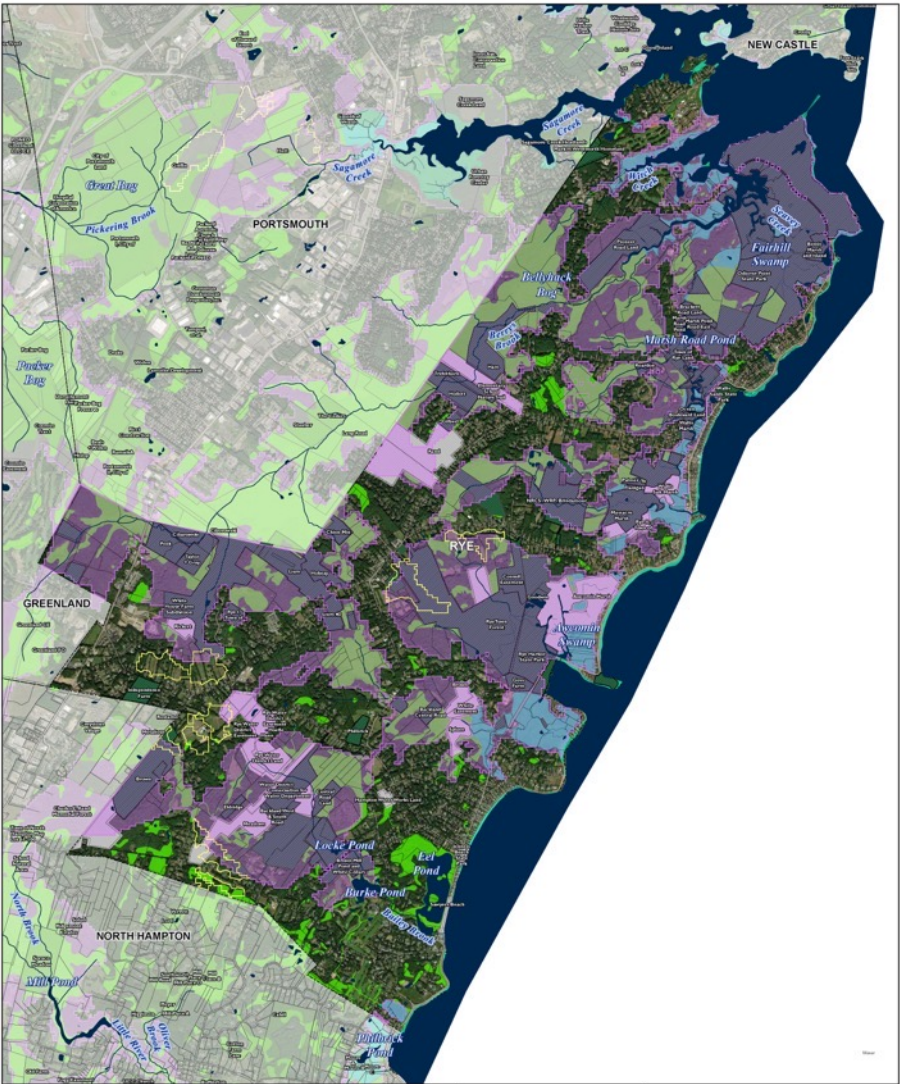


Get Involved

- Participate in master planning process
- Join a town board or committee
- Volunteer in town



Map Activity



Legend

- Coastal Conservation Focus Areas
- Coastal Priority Agricultural Resources
- Conservation Land
- Public/Other Land
- Parcels
- Municipal Boundary Municipal Boundary
- Streams/Rivers
- Estuary
- Freshwater Wetland
- Open Water

Locus Map

New Hampshire's Coastal Watershed Conservation Plan

Rye,
New Hampshire

Map created 8/9/2023 by:
The Nature Conservancy
New Hampshire

Data displayed from NH GRANIT, NH-CIES, MassGIS, Maine Office of GIS & The Nature Conservancy.



Rye, NH

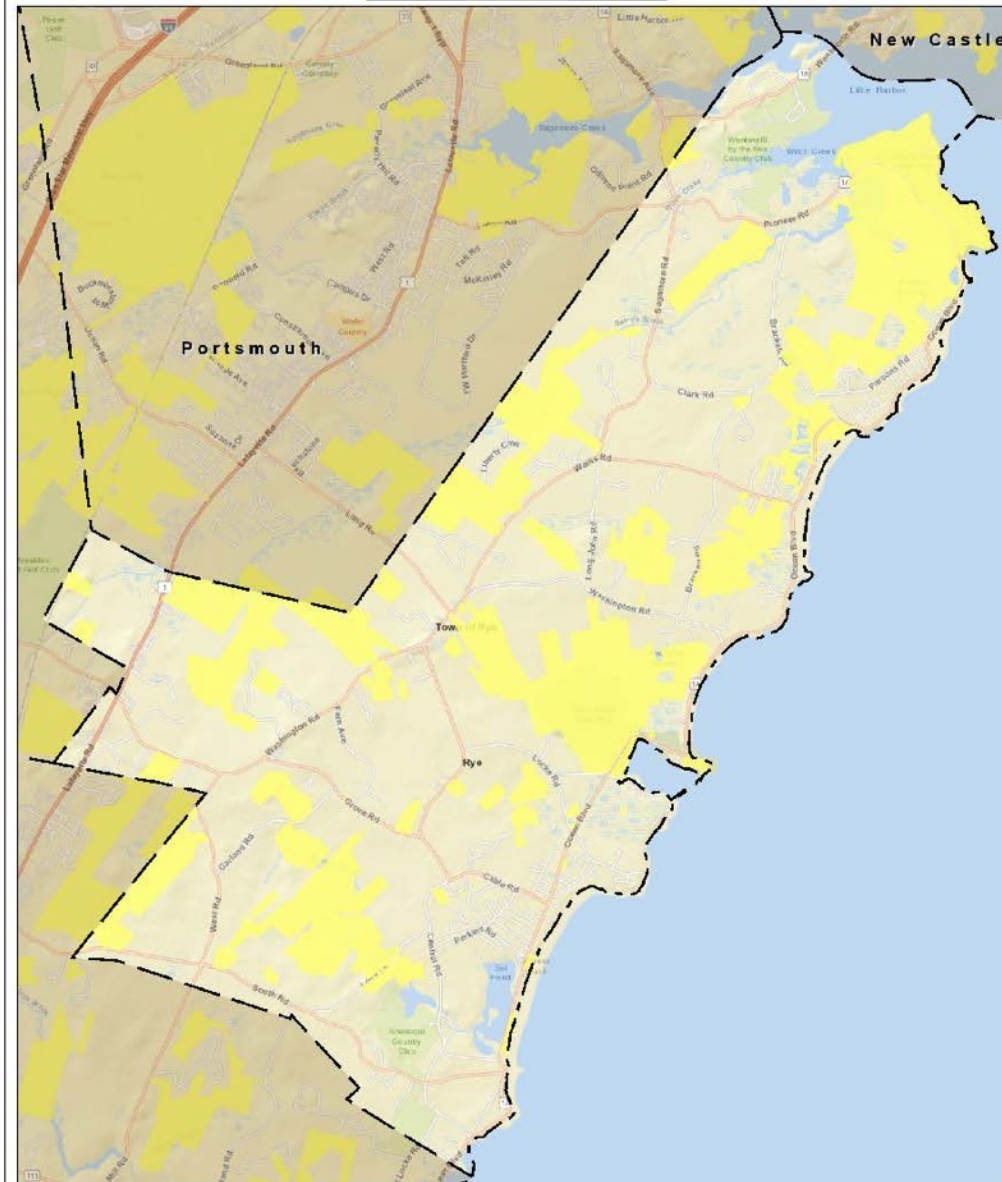


October 19, 2023

1 inch = 2900 Feet

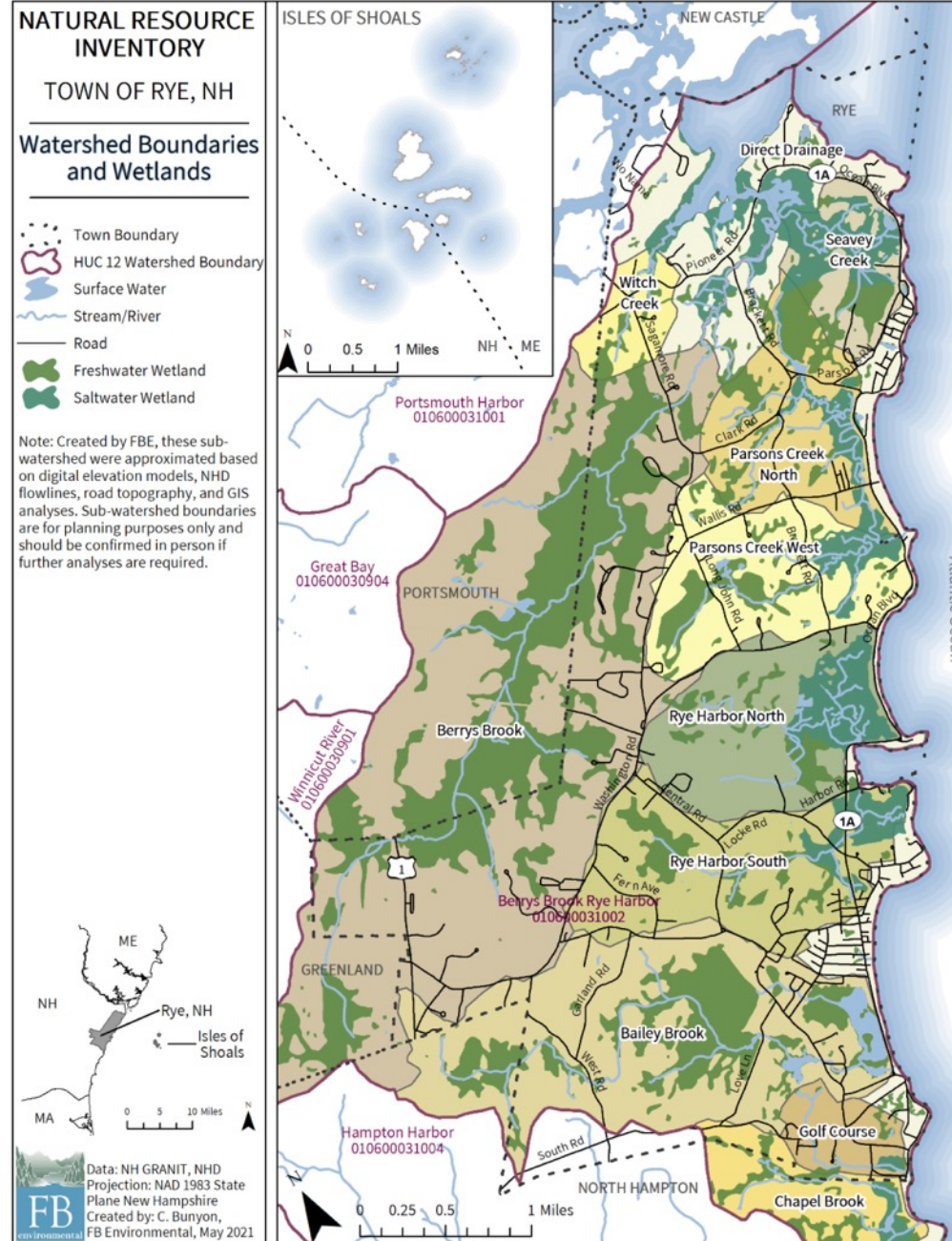
www.cai-tech.com

0 2900 5800 8700

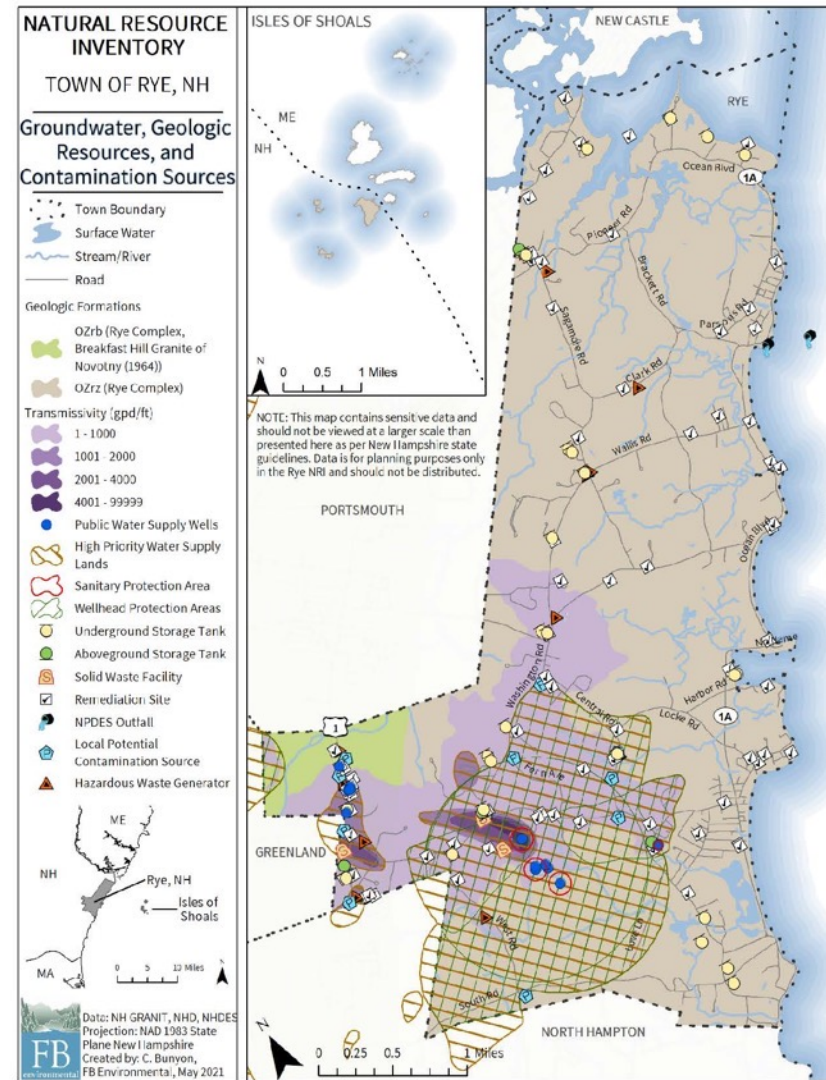


Conservation Land

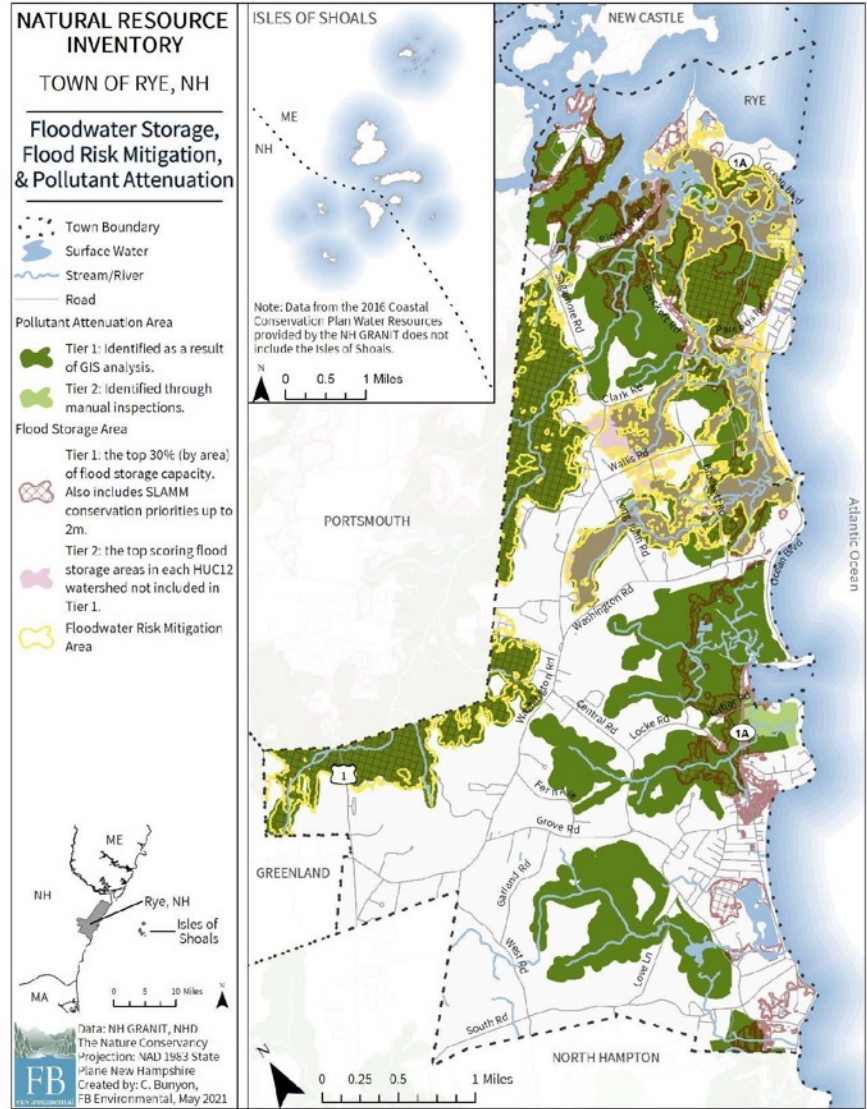
Map 2



Map 3

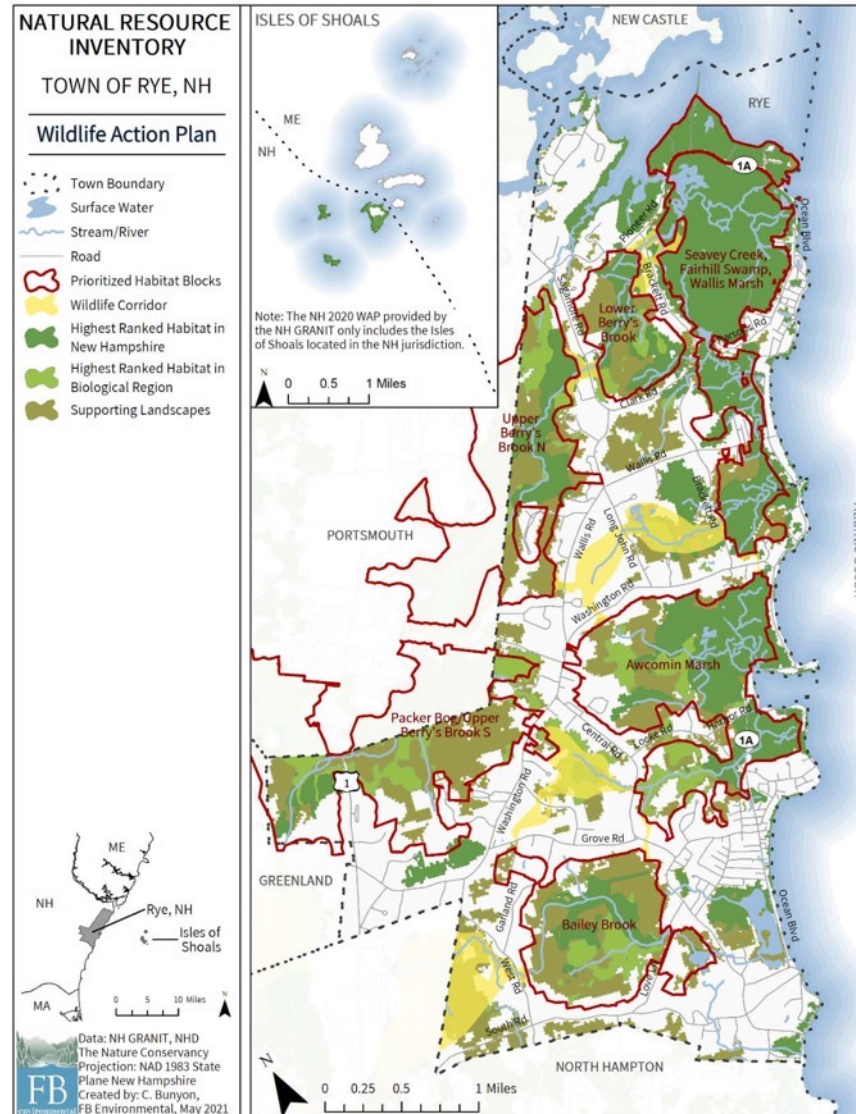
Return to [Section 2.4](#).

Map 5



Return to [Section 2.5](#).

Map 9



Return to [Section 3.2](#), [Section 7.1](#), or [Section 7.2](#).

Discussion

- Actions to continue protecting critical natural resources
 - Ideas/priorities for the Town and for individual community members or neighborhoods
- What assistance or resources would be helpful?
- What questions do you have?

