

# 120 Garland Road & Rye Water by the numbers

- Bailey Brook running through the property went from no dammed pond in 2008 to a dammed area of approximately 64,000 square feet in 2023
- The outfall of the dam is less than 1000 feet from Bailey Brook and Cedar Run Rye Water District Wells and 1884 feet from Garland Wells
- Is this new dam good or bad for Rye?

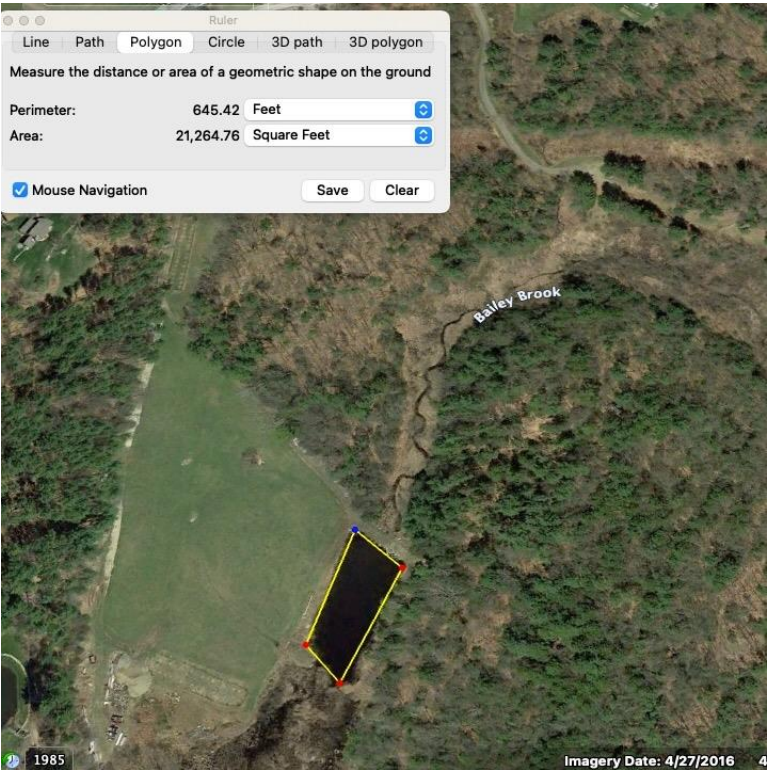
*Data was complied by the Rye Civic League from public & free [Google Earth Pro](#) satellite imagery taken at about the same time of year (April –May). Area and distance calculations are approximate and were measured with Google Earth Pro's built in tools.*

# Area of impounded Bailey Brook water at 120 Garland Road

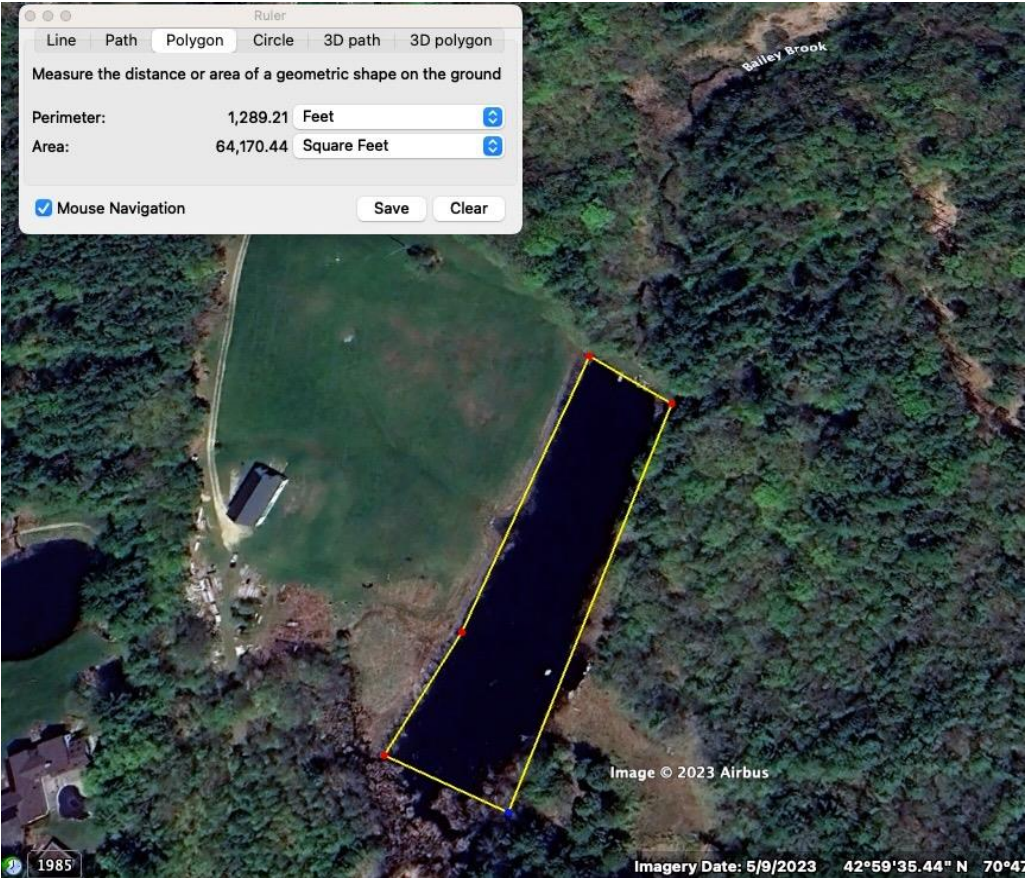
2008-None



2016- 21,000 square feet



2023-64,000 square feet

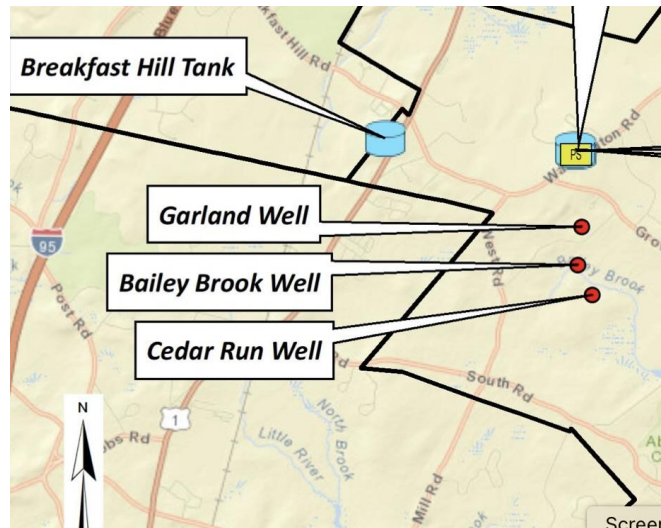


Approximate areas calculated April-May for each view



# Approximate Distance to Rye Water District Wells from Dam Outlet

1884 feet from Garland Well & less than 1000 feet from Bailey Brook & Cedar Run Wells



Source: Rye Water District

