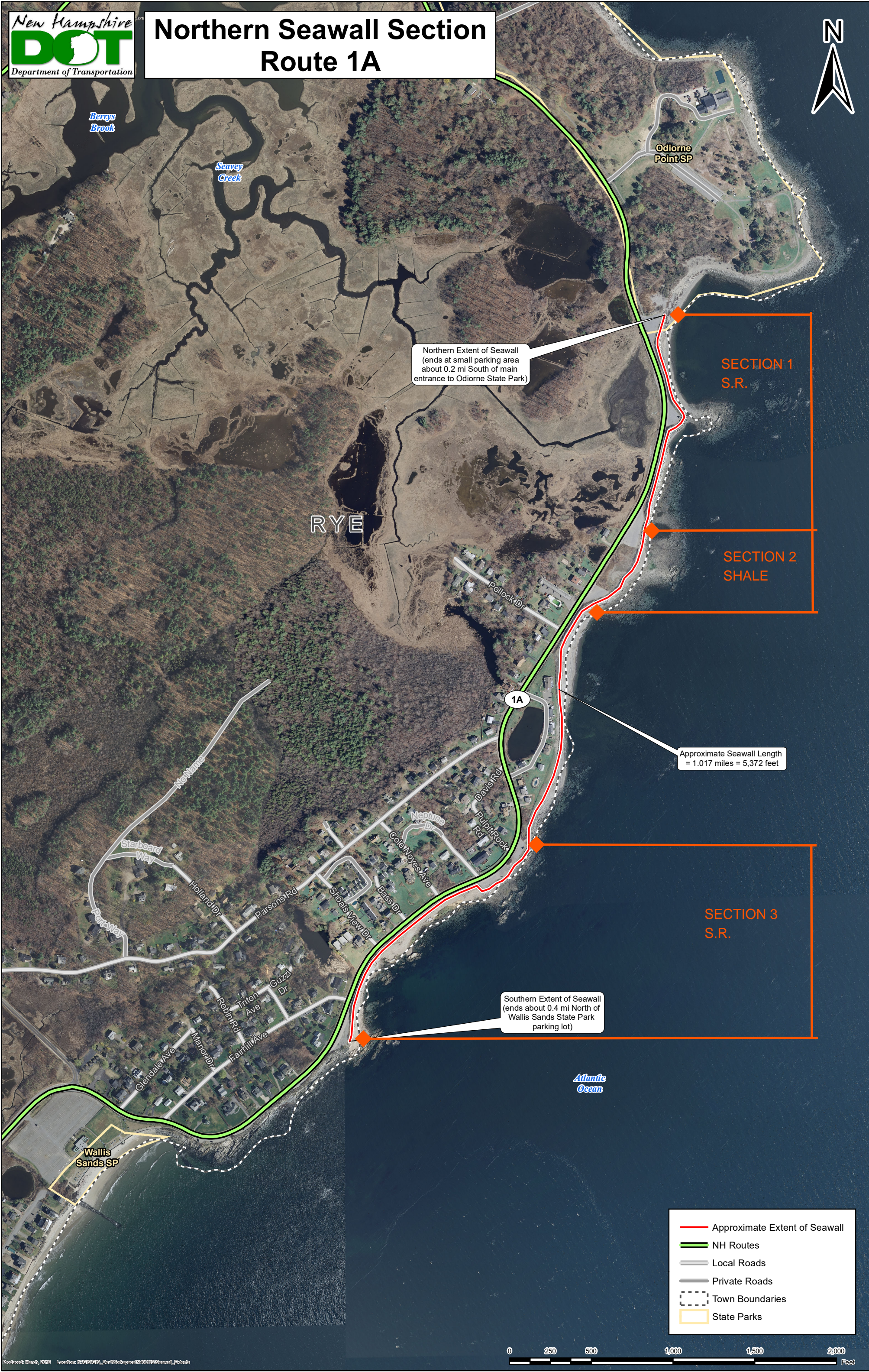


Northern Seawall Section Route 1A



Berays Brook

Seavey Creek

Odiorne Point SP

Northern Extent of Seawall
(ends at small parking area
about 0.2 mi South of main
entrance to Odiorne State Park)

SECTION 1
S.R.

RYE

SECTION 2
SHALE

1A

Approximate Seawall Length
= 1.017 miles = 5,372 feet

SECTION 3
S.R.

Southern Extent of Seawall
(ends about 0.4 mi North of
Wallis Sands State Park
parking lot)

Atlantic Ocean

Wallis Sands SP

- Approximate Extent of Seawall
- NH Routes
- Local Roads
- Private Roads
- Town Boundaries
- State Parks

