



SCHOOL ADMINISTRATIVE UNIT 50
Greenland, New Castle, Newington, Rye
48 Post Road
Greenland, NH 03840
603-422-9572
www.sau50.org

Stephen Zdravec
Superintendent
szdravec@sau50.org

Kelli R. Killen
Assistant
Superintendent
kkillen@sau50.org

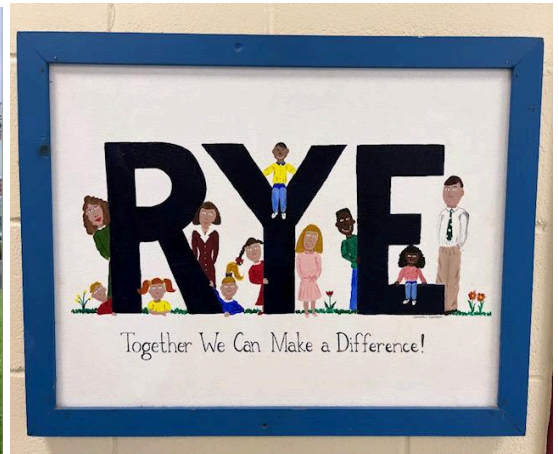
Susan Penny
Business Administrator
spenny@sau50.org

Stacey Kirby
Director of Special
Education
skirby@sau50.org

Chris Russo
Director of Technology
crusso@sau50.org

Brian Helfrich
Director of Facilities
brian@sau50.org

SAU 50 Director of Facilities - Administrator Report **Brian C. Helfrich - Rye - April 2024**



Accomplishments, Successes & Near-Term Projects:

- ★ Water testing is once again a central focus of SAU 50 for health and safety and to remain in compliance with the EPA. Rye Elementary School round 3 results of lead testing with the “**GetTheLeadOut**” with [zero drinking outlets](#) above the recommended limit. You can search by facility name (Rye Elementary School) or state-issued ID (22475). This is the final round of testing for this program. We are still awaiting Rye Junior High results as they sent us Nashua High School test kits by mistake. I will include their results in a future report. Technically we are only supposed to test drinking faucets but I find it helpful to know what is happening with as many faucets as possible and is why you will see the kitchen listed on the test results page. I will also add this testing is important as results can and do change very quickly and why it's critical to stay on top of it. Often old plumbing or fixtures can result in lead getting in the water system and changing the test results.

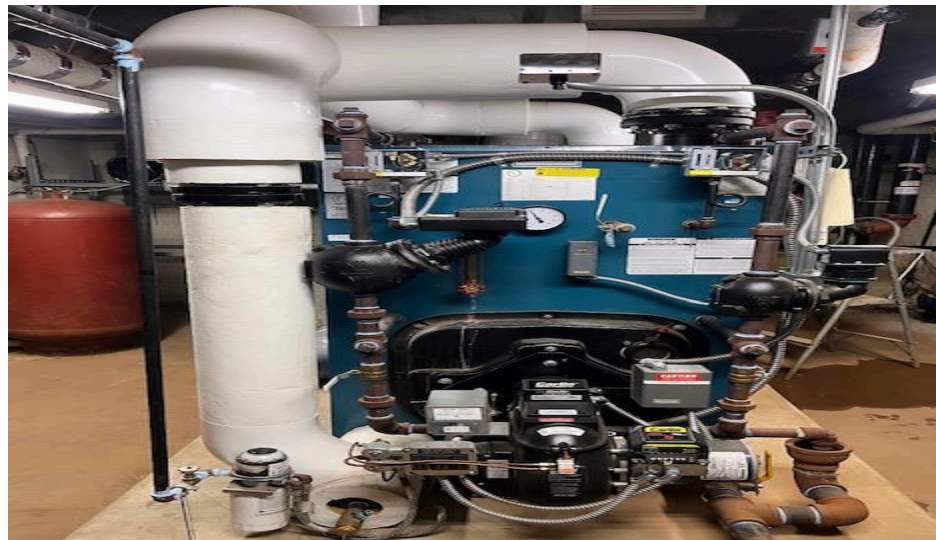
3 All School Data

Use this data

Hide fields Filter Grouped by 1 field Sort

R3 Outlet ID	Facility Name	Location / Room Number	Outlet Type	R3 Result(s) (ppb)
FACILITY NAME				
Rye Elementary Sch Count 10				
5528	22475-1	Rye Elementary School	next to front office	Drinking Fountain BRL
5529	22475-2	Rye Elementary School	across from 106	Drinking Fountain BRL
5530	22475-3	Rye Elementary School	between 191 and 193	Drinking Fountain 1.35
5531	22475-4	Rye Elementary School	near 149	Drinking Fountain BRL
5532	22475-5	Rye Elementary School	135 steam room	Drinking Fountain 3.84
5533	22475-6	Rye Elementary School	in gym	Drinking Fountain BRL
5534	22475-7	Rye Elementary School	gym floor	Drinking Fountain BRL
5535	22475-8	Rye Elementary School	kitchen near food window opening	Kitchen Faucet 2.03
5536	22475-9	Rye Elementary School	near dishwashing on right side when walk in	Kitchen Faucet 0.762
5537	22475-10	Rye Elementary School	on left side in dishwashing station room	Kitchen Faucet 0.509

★ HVAC maintenance is well under way. We have a great plan in place with Palmer and Sicard who knows our HVAC systems better than we do. You know the HVAC is running as intended when nobody knows it's even on. Over the next month you will see Palmer and Sicard here often performing all the intricate preventative maintenance to ensure years of efficient operation of our systems as well as making improvements to our RTU (roof top units) at both schools over the summer months per our CIP (capital improvement plan). We are also going to solve some of the unbearable heat issues with the rooms above the boiler units at RJH by adding mini splits to the guidance office and conference room. We utilize these units at GCS and NPS and they work amazingly well for smaller spaces (cooling, heating and dehumidification).



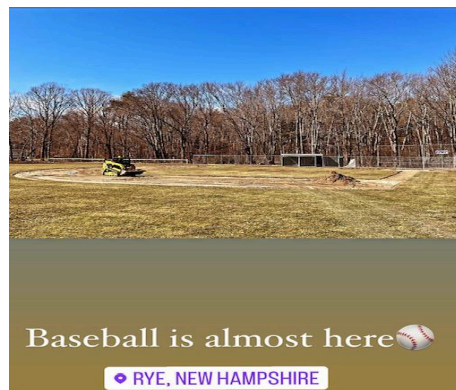
- ★ I am following up the lead water testing with PFAS/PFOS testing in May as well for SAU 50 schools with [Absolute Resources](#). This is the same company we used in the past and local to Portsmouth, NH. PFAS/PFOS are a much more complicated subject and more difficult challenge to solve. I am hopeful based on state facility meetings I have been on that the New Hampshire Department of Environmental Services will be doing a PFAS/PFOS testing program in the near future for all NH schools similar to the “GetTheLeadOut” program.



- ★ The Rye Elementary School playground is entering the final phase. We have had 4 deliveries of equipment over the last month and expect to break ground in the middle of May. Excitement is at an all time high and I can't wait to see the students faces when they get to test it all out. I want to shout out the countless people in the Rye community who helped take this from a dream to a reality over the past 2 years.



- ★ Lang Field has seen upgrades in its landscaping care, signage, infield dirt, dugout repair, infield sifting and trimming. I will be meeting with Jim Gordon, Jordan Carlidge and NELC over the coming weeks to ensure we have a good plan in place to maintain what we have and continue to improve upon the field. I also want to add that we are going to do our best to include the same care and maintenance for the new softball field out back as well in future budgets. Both fields deserve the same level of care and maintenance moving forward. Super shoutout to Jim Gordon and Matt Curtin for helping set-up the new baseball fence. It took us roughly 2 hours prepping the fence. Not an easy task but a critical one for the field.



- ★ After doing an energy audit of the schools, I noticed some SAU 50 buildings were in desperate need of weather stripping around entrances and exits. Rye Junior High was overdue to have new weatherstripping put on the gymnasium access doors. This will not only help with energy efficiency and lower energy bills but also prevent pests from entering thr building. Granite Glass has done a lot of work for SAU 50 over the

years and they are an example of a local business relationship we want to foster and grow over time. They will also be bidding on future door/window projects at SAU 50 schools.



- ★ One of the biggest projects at the Rye schools this summer is the long anticipated RJH gym window project. We have been meeting with contractors to line up the best options and pricing for this important project that will heavily impact the safety, energy efficiency of the school, access to proper ventilation and the optics/curb appeal.



- ★ White House Hosts First-Ever Summit for Sustainable School Buildings and Grounds - [Watch Live April 26th at 1pm](#) - This could be huge for all schools and future grants.



SCEP
STATE & COMMUNITY ENERGY PROGRAMS

Watch the First-Ever White House Summit for Sustainable School Buildings and Grounds

April 11, 2024

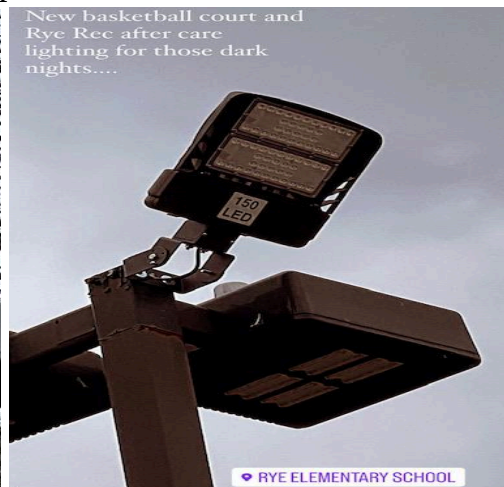


Schools are invited to watch the White House's first-ever Summit for Sustainable and Healthy K-12 Infrastructure on April 26th, highlighting the Biden-Harris Administration's commitment to providing communities equitable access to energy efficient, climate resilient, and healthy school facilities that are conducive to learning. This summit will highlight the pressing need for sustainable 21st-century school infrastructure and the impact that facility conditions have on student and teacher health and learning outcomes.

The event will also provide deeper insight into the tools and existing commitments offered by the federal government to invest in school sustainability and infrastructure. Students, educators, administrators, parents, and other school stakeholders are invited to tune in to the opening plenary and panels on April 26th from 1 – 3:30 p.m. ET. <https://youtube.com/live/am1pC1rWUE>

Challenges/Future Budget Implications

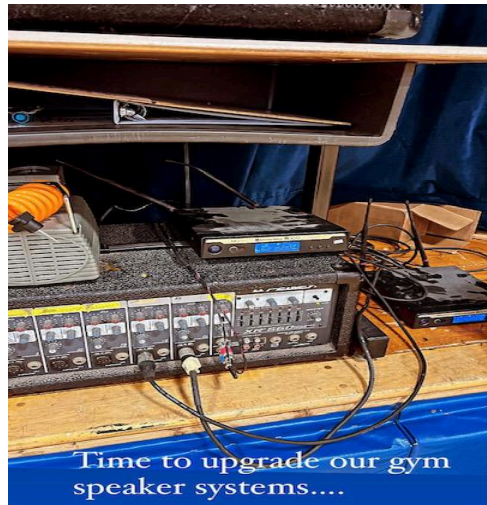
- ★ Exterior lighting at both Rye schools has been a topic I keep hearing from parents, staff and the community at large. At RJH the low exterior lighting poses a danger at dusk due to low visibility of people entering and exiting the front of the school. At RES we had issues out back for Rye Rec and the basketball courts. I have been working with companies to get quotes to increase the LED lighting in a way that will provide safer visibility without causing “light pollution” to drivers or neighbors. Once the RES playground is installed, we will want improved lighting so students and residents can safely play in that area when it gets dark around 3pm-5pm in the dead of winter.



New basketball court and Rye Rec after care lighting for those dark nights....

RYE ELEMENTARY SCHOOL

- ★ The speakers/equipment at both Rye schools are extremely aged. Currently we utilize a Peavey XR 560 powered mixer, mics and accessories at RJH from 1998. They are inadequate for the needs of both schools in 2024. Moving forward with the plays/events we now have etc. Jim Gordon and I will be working with Chris Cooney and Chris Russo to see what our best options are for hopefully getting this in a future budget. I want to shout-out residents/parents like Robin Whebe who often lug his own speakers and equipment to the schools so we can have plays, music events, walkathons etc.



- ★ Something that has been on many people's minds for years at RJH is the upstairs stairwell “study cubbies” and how we can make them more accessible and attractive to students. We are gathering quotes to hopefully include in a future budget or grant.



- ★ Tree care at both schools grounds will be a focus of mine over the coming months into the new fiscal year. In my short time here we have had several trees fall onto the property at both schools. Yearly tree limbing will make our grounds safer and decrease instances of trees falling on and damaging property. One area in particular is the Lang Field ash trees which we will have removed this summer before more fall onto the field/dugouts.

Other School Projects Happenings:

1. GCS

- a. Stone school windows replacement for energy efficiency and safety.
- b. Gym floor replacement of rotted wood.
- c. Stone school door replacements for energy efficiency and safety.
- d. Rubber crack fill and sealcoat of parking lot.
- e. HVAC adding mini splits to 1965 wing and conference room.
- f. Seacoast Security JP Series Video Intercom upgrade (coming soon to all schools).

2. MHT

- a. Exterior door replacement of the entire school for safety and energy efficiency.
- b. JP Series Video Intercom upgrade (coming soon to all schools).
- c. Removal of 14 Ash trees infected with EAB (emerald ash borer).

3. NPS

- a. Playground/swing upgrade with traditional, ADA compliant and inclusive elements and rubber flooring pathways.

Thank You Rye facility staff for all your help throughout the year!



The A Team

RYE ELEMENTARY SCHOOL

RYE ELEMENTARY SCHOOL





*Thank you Jim Gordon for always going above and beyond to help students and staff at both rye schools.