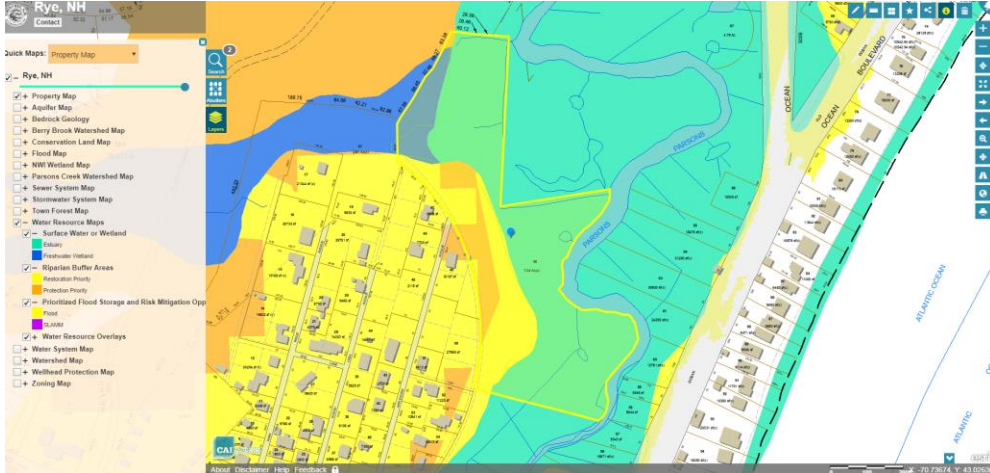
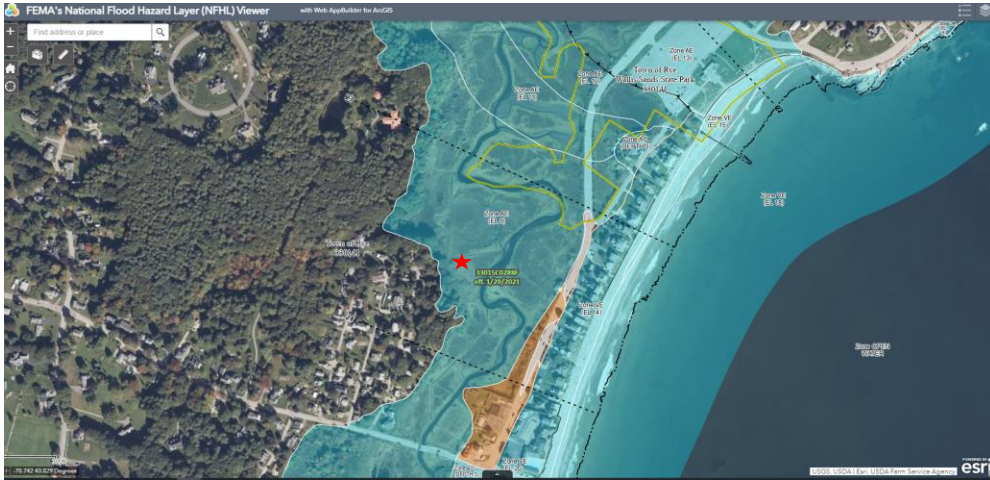


# Spiewak Property, 0 Ocean Boulevard, Tax Map 194, Lot 62

## 1) Restoration and Protection Priority Riparian Buffer Areas



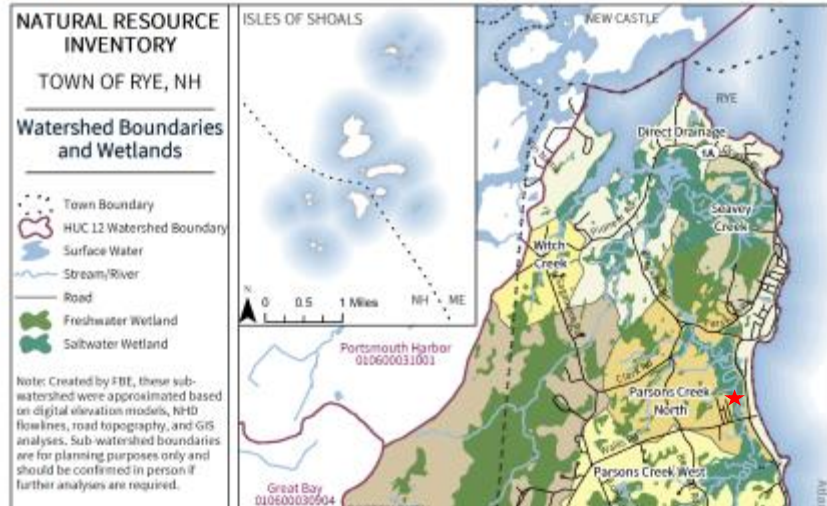
## 2) Flood Zone



## 3) Parsons Creek Watershed

### NATURAL RESOURCES INVENTORY | RYE, NEW HAMPSHIRE

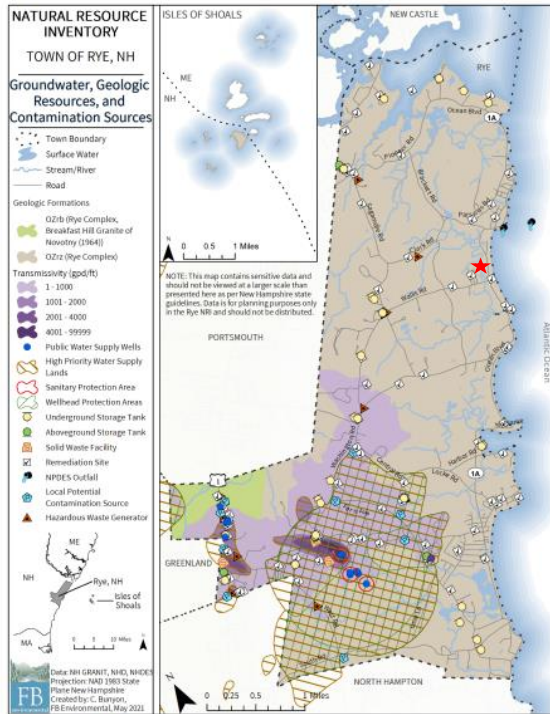
#### Map 2



4) Near remediation sites for groundwater contamination

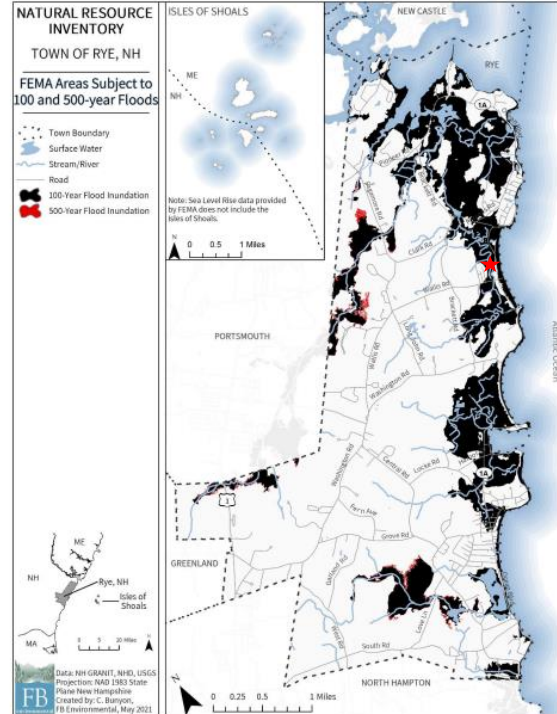
5) 100-Year Flood Inundation

Map 3



Return to [Section 2.4](#).

Map 4

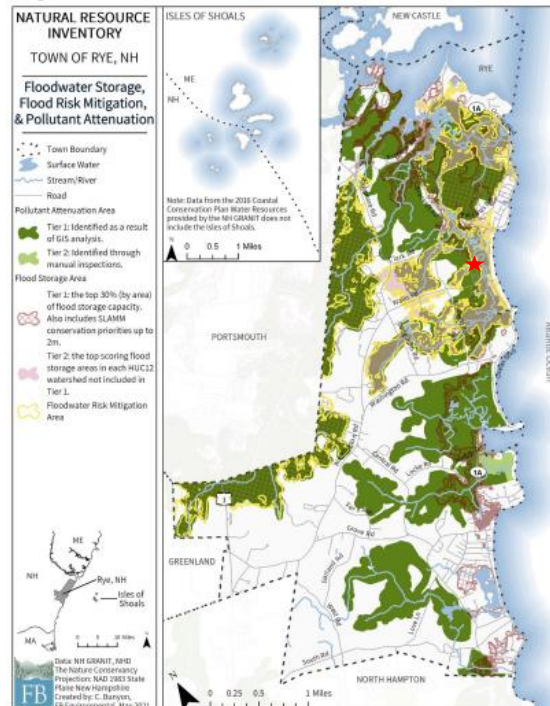


Return to [Section 2.5](#).

6) Floodwater Risk Mitigation Area

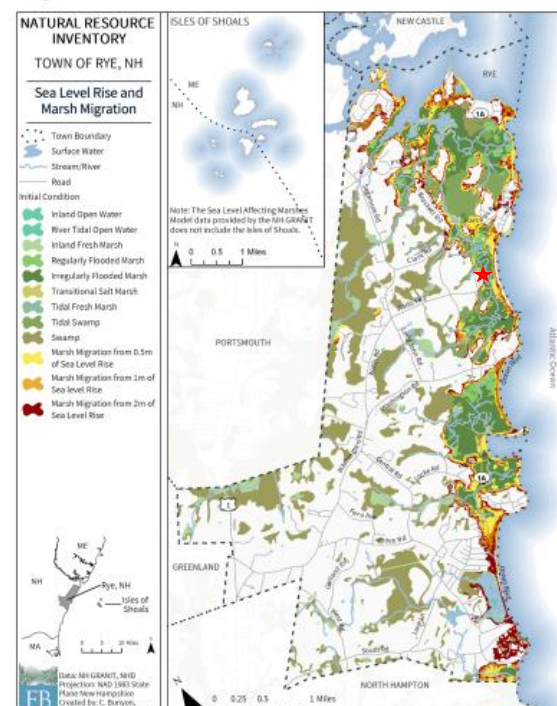
7) Marsh Migration from 0.5m, 1m, and 2m of Sea Level Rise

Map 5



Return to [Section 2.5](#).

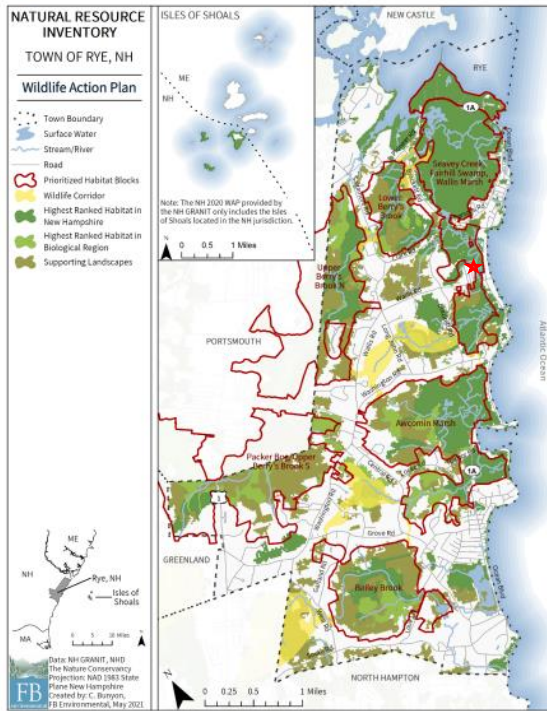
Map 6



Return to [Section 2.2](#).

8) Prioritized Habitat Block & Highest Ranked Habitat in NH

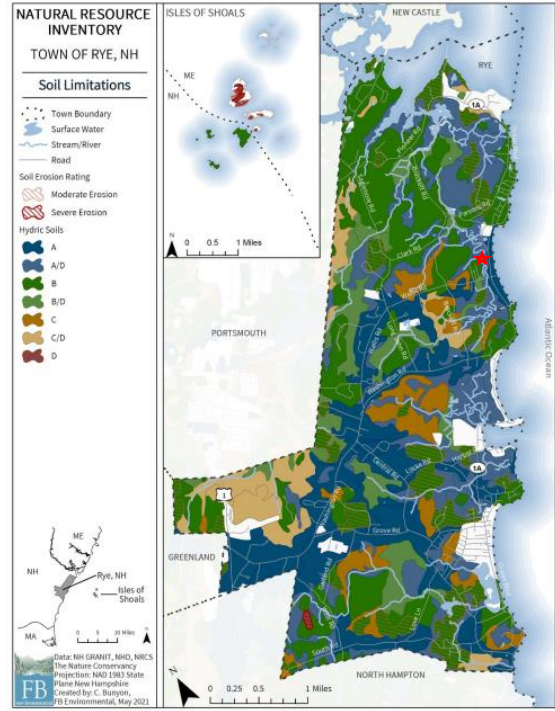
Map 9



Return to [Section 3.2](#), [Section 7.1](#), or [Section 7.2](#)

9) A/D & B Hydric/Saturated/Poorly Draining Wetland Soils (not ideal for development)

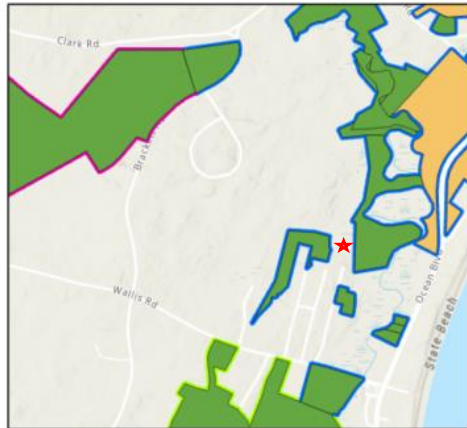
Map 11



Return to [Section 4.1](#)

10) Adjacent to existing conserved land

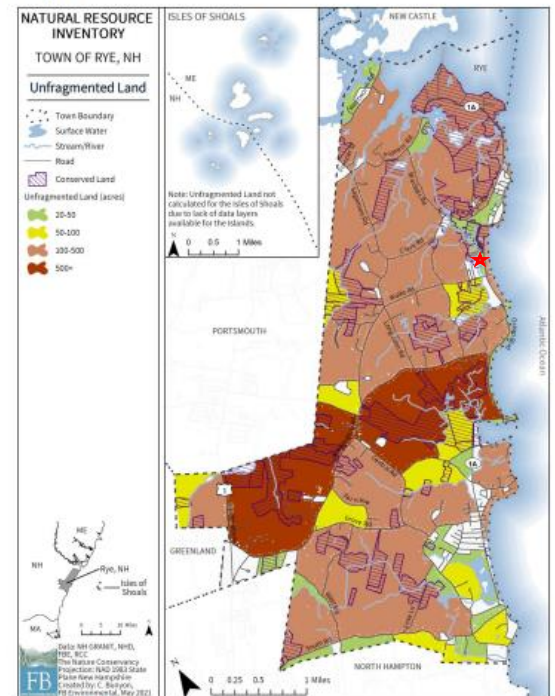
Conserved Land



Conserved Land by Owner	Conservation Land Type of Protection
Federal	Conservation Easement
State	Deed Restriction
Municipal/County	Fee Owned
Other Public/Quasi-Public	Protective Easement
Private	(for Water Supply Lands)

11) Adjacent to existing unfragmented land

Map 15



Return to [Section 7.2](#)