

NOT FOR CONSTRUCTION

DESIGNED BY: XXX
 DRAWN BY: XXX
 CHECKED BY: XXX
 PROJECT: 22404.11

PEASE DEVELOPMENT AUTHORITY
 DIVISION OF PORTS AND HARBORS
 55 Market Street
 Portsmouth, NH

RYE HARBOR
DECK AND DOCK HOUSE
 1870 Ocean Boulevard
 Rye, NH

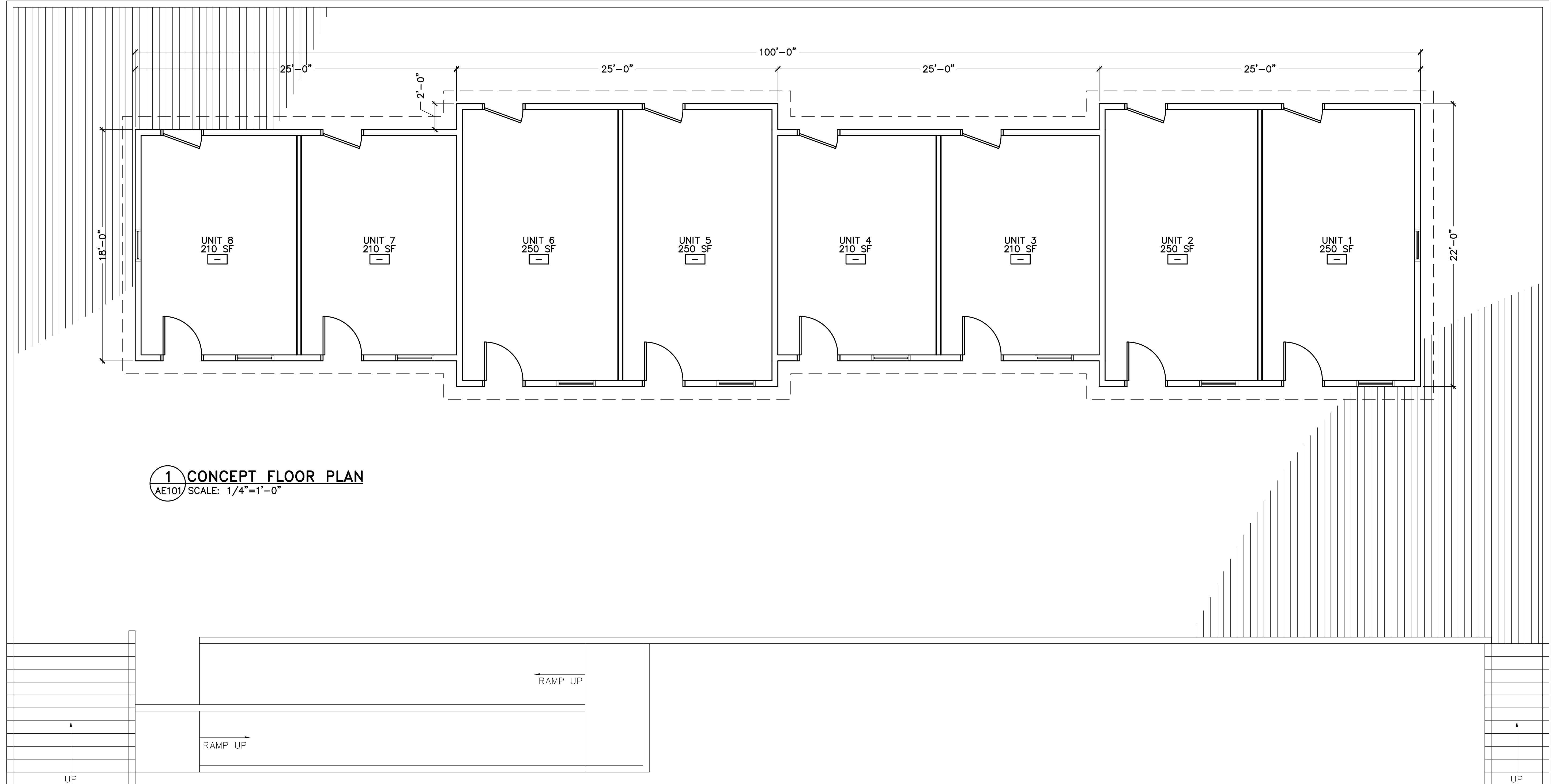
CONCEPT FLOOR PLAN

SCALE: AS NOTED

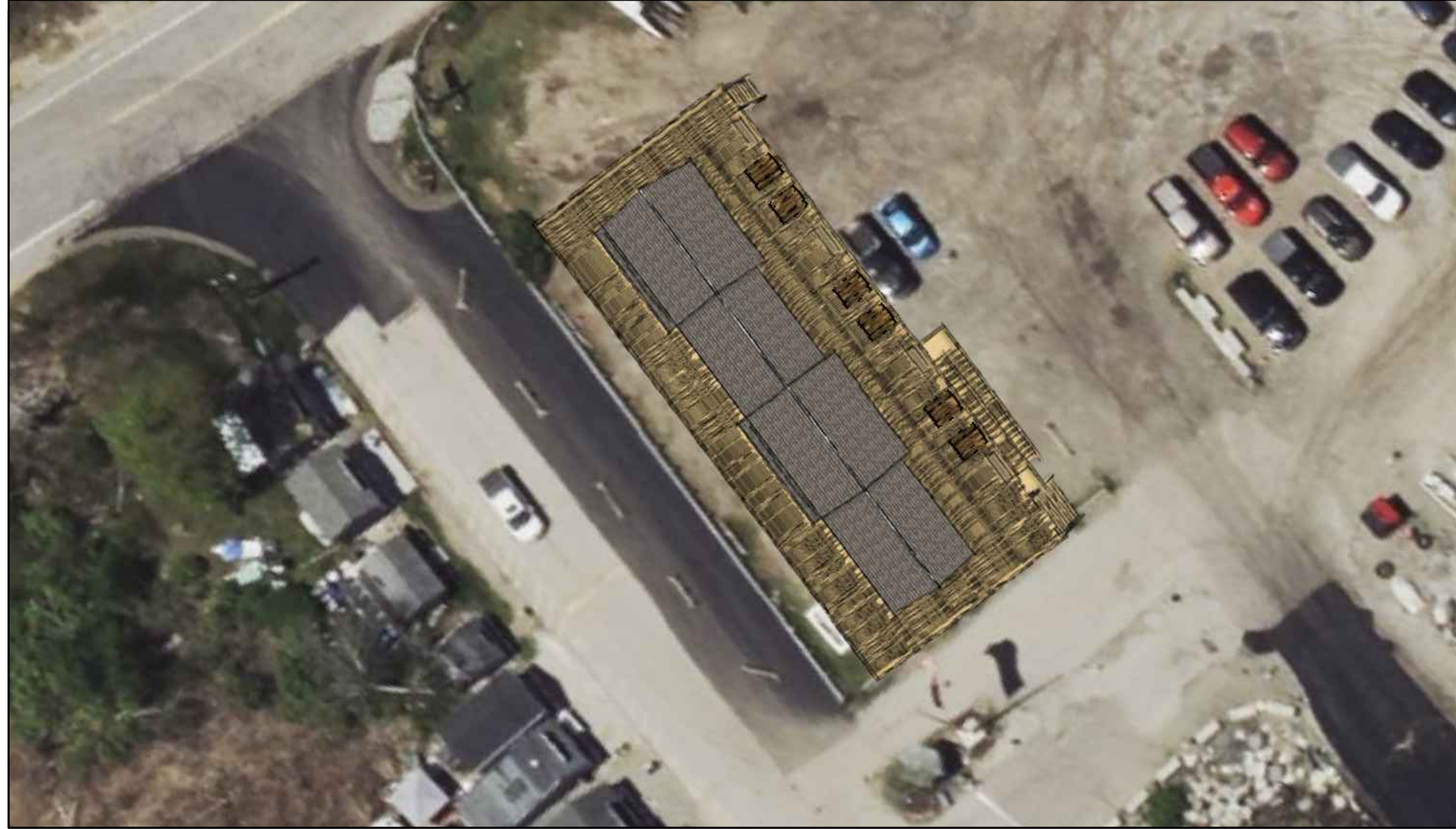
DATE: 07-18-24

DWG.: **AE101**

SHEET: OF .



1 CONCEPT FLOOR PLAN
 AE101 SCALE: 1/4"=1'-0"



NOT FOR CONSTRUCTION

DESIGNED BY: XXX
 DRAWN BY: XXX
 CHECKED BY: XXX
 PROJECT: 22404.11

PEASE DEVELOPMENT AUTHORITY
DIVISION OF PORTS AND HARBORS
 55 Market Street
 Portsmouth, NH

RYE HARBOR
DECK AND DOCK HOUSE
 1870 Ocean Boulevard
 Rye, NH

3D VIEWS

SCALE: AS NOTED

DATE: 07-18-24

DWG.: **AE201**

SHEET: OF .

ESTIMATE OF PROBABLE COST



OAK POINT
ASSOCIATES

architecture
engineering
planning

PROJECT TITLE
Deck and Dock House

PROJECT LOCATION
Rye Harbor
Rye, New Hampshire

CLIENT NAME
PDA

CLIENT PROJECT NUMBER

DATE
18 July 2024

OPA PROJECT NUMBER
22404.11

STATUS OF DESIGN
Schematic

ESTIMATE VALID TO
Winter 2025

ITEM DESCRIPTION	PERCENTAGE	MATERIALS	LABOR	ESTIMATED AMOUNT
BASE BID - PROJECT COST SUMMARY				
DIVISION 01 - GENERAL REQUIREMENTS (see mark-up below)		\$0	\$0	\$0
DIVISION 03 - CONCRETE		\$1,560	\$2,640	\$4,200
DIVISION 05 - METALS		\$7,500	\$2,500	\$10,000
DIVISION 06 - WOOD, PLASTICS, AND COMPOSITES		\$239,035	\$167,060	\$406,095
DIVISION 07 - THERMAL AND MOISTURE PROTECTION		\$12,500	\$9,068	\$21,568
DIVISION 08 - OPENINGS		\$41,600	\$11,600	\$53,200
DIVISION 31 - EARTHWORK		\$3,000	\$5,775	\$8,775
DIVISION 32 - EXTERIOR IMPROVEMENTS		\$685	\$680	\$1,365
BASE BID SUBTOTALS		\$305,880	\$199,323	\$505,203
Design Contingency Subtotal	15.0%			\$75,780
General Conditions Subtotal	10.0%			\$58,098
OH & P Subtotal	15.0%			\$95,862
Bond Subtotal	2.5%			\$18,374
BASE BID TOTAL:				\$753,318
BASE BID TOTAL (ROUNDED):				\$753,300
<i>Base Bid Goal</i>				\$775,000
<i>Delta</i>				-\$21,682
OPTIONS				
OPTION 1 TOTAL (ELECTRIC SERVICE)				\$115,590
OPTION 2 TOTAL (WATER SERVICE AND HOLDING TANK)				\$47,120
PROJECT TOTAL w/OPTIONS				\$916,011