



SCHOOL ADMINISTRATIVE UNIT 50
Greenland, New Castle, Newington, Rye
48 Post Road
Greenland, NH 03840
603-422-9572
www.sau50.org

Stephen Zdravec
Superintendent
szdravec@sau50.org

David Hobbs
Assistant
Superintendent
dhobbs@sau50.org

Susan Penny
Business Administrator
spenny@sau50.org

Stacey Kirby
Director of Special
Education
skirby@sau50.org

Chris Russo
Director of Technology
crusso@sau50.org

Brian Helfrich
Director of Facilities
brian@sau50.org

SAU 50 Director of Facilities - Administrator Report **Brian C. Helfrich - Rye - October 2024**



Accomplishments, Successes & Near-Term Projects:

- ★ The new school year started off with a bang at RES with the playground addition. This has been a long time coming and something the community at large can be proud of. Great job by everyone involved!

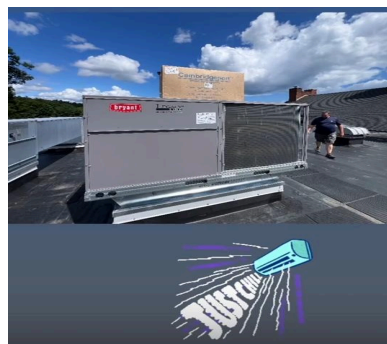


★ HVAC pre-winter maintenance is well under way. We have a great plan in place with Palmer and Sicard who knows our HVAC systems better than we do. You know the HVAC is running as intended when nobody knows it's even on. Over the next month you will see Palmer and Sicard here often performing all the intricate preventative maintenance to ensure years of efficient operation of our systems. This summer we added several RTU (roof top units) at both schools per our CIP (capital improvement plan). We also solved some of the unbearable heat issues with the rooms (conference/tech) above the boiler units at RJH by adding mini splits. We utilize these units at GCS and NPS and they work amazingly well for smaller spaces (cooling, heating and dehumidification). We also added [Viking Controls](#) HVAC control system to both schools. In the coming week I will be creating and adjusting a schedule so we become more efficient than ever in the history in Rye schools winter heating. In Greenland we will be saving around 25 days worth of energy with “smart scheduling” and expect similar results in Rye.



Pre-winter HVAC maintenance

 Rye Elementary School



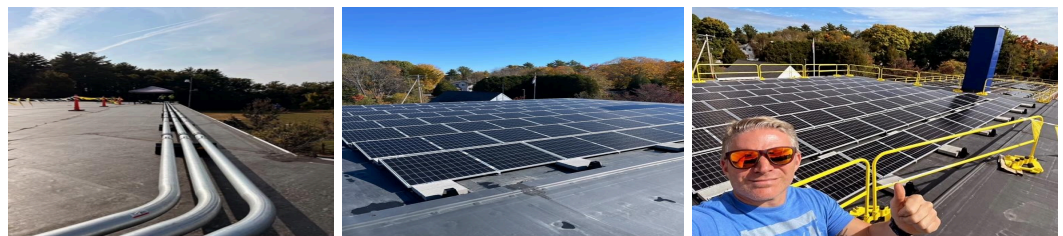
- ★ Water testing is once again a central focus of SAU 50 for health and safety and to remain in compliance with the EPA. While the state water testing programs have ended, SAU 50 has worked with [Absolute Resources](#) to continue testing the 6 buildings in the district and their water. I will include test results in a future report. I am hopeful based on state facility meetings I have been on that the New Hampshire Department of Environmental Services will be doing a PFAS/PFOS testing program in the near future for all NH schools.



- ★ The Rye Elementary School solar project is in its final phase. Revision provided an update on my project inspection last weekend with them. The fencing, storage containers and miscellaneous equipment will be removed leading up to the Eversource shutdown. At the shutdown, Revision will tie into the PV (photovoltaic) system. Due to the school play this got pushed out a week until Saturday November 2nd. If you want to geek out (like I did) on specifics of a PV...enjoy this energy.gov video:

<https://www.energy.gov/eere/solar/solar-photovoltaic-technology-basics>

Once all this is done, Revision will perform a final system walkthrough with myself and Jim Gordon. We will then get the monitoring app like we have for RJH and in the future can truly start to analyze our solar data.



Solar Panel Details

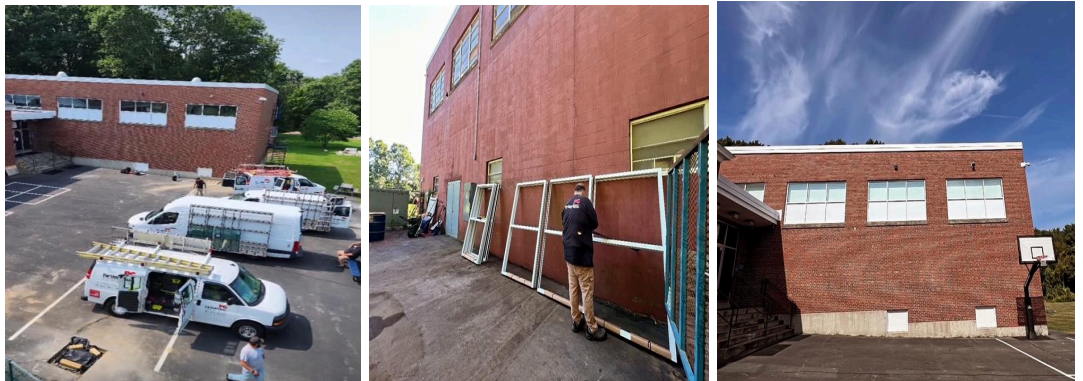
 **Dan Hackett**
205,000 kilowatt hours of clean energy from 383 panels in year 1.
\$340,000 net savings over 25 years
Annual CO2 reduction 201,000 lbs.
So grateful to school leaders and citizens of Rye for making this very meaningful investment in clean energy.



7m Like Reply 1

 **Brian Christopher** Author
Top contributor
Dan Hackett Thanks Dan!

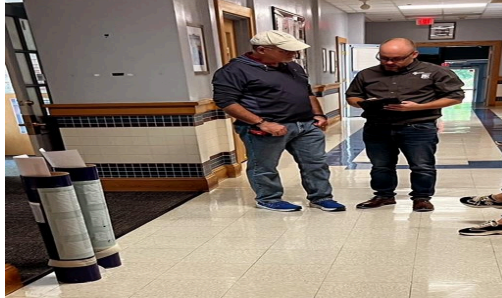
- ★ One of the biggest projects at the Rye schools this summer was the long anticipated RJH gym window renovation project. The 1965 windows were replaced with much safer, energy efficient ones that will give us access to proper ventilation and greatly improve the RJH facility optics, school pride & curb appeal.



- ★ We have both an SAU 50 wide facility useful life planning document as well as our 5 year CIP. The useful life document helps feed our CIP each year. The CIP has been updated during the past month deep dive budgeting process and can be found here:

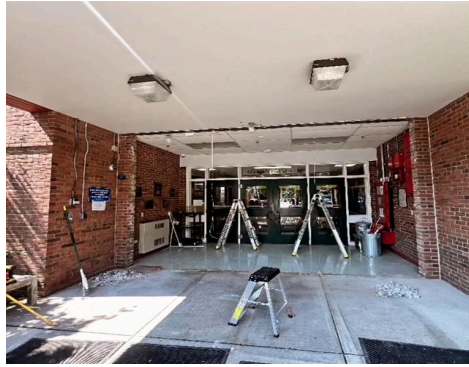
[x Rye School CIP: 2026-2030.xlsx](#)

- ★ This early fall we performed a weekend facilities audit with EEI [Energy Efficient Investments](#). Greenland Central School utilized their services roughly a decade ago with good success. During this audit we walked the Rye schools basement to attic to roof. We are in the process of digesting the information and ways we can more quickly and cost effectively solve all the facilities issues we face as a community. Some key areas of need were RJH attic, RES boiler room, RJH steam system, ventilation upgrades, LED improvements and conversion from oil to propane amongst others.



- ★ Another huge project this late summer was the RES exterior doors project. We replaced a total of 9 exterior doors dating to the early-mid 1990's. The new doors are safer and more energy efficient. This was

highlighted during our NHDHS school safety review last year as a goal item.



Various Rye Schools Happenings!



Mason work on RJH chimneys.



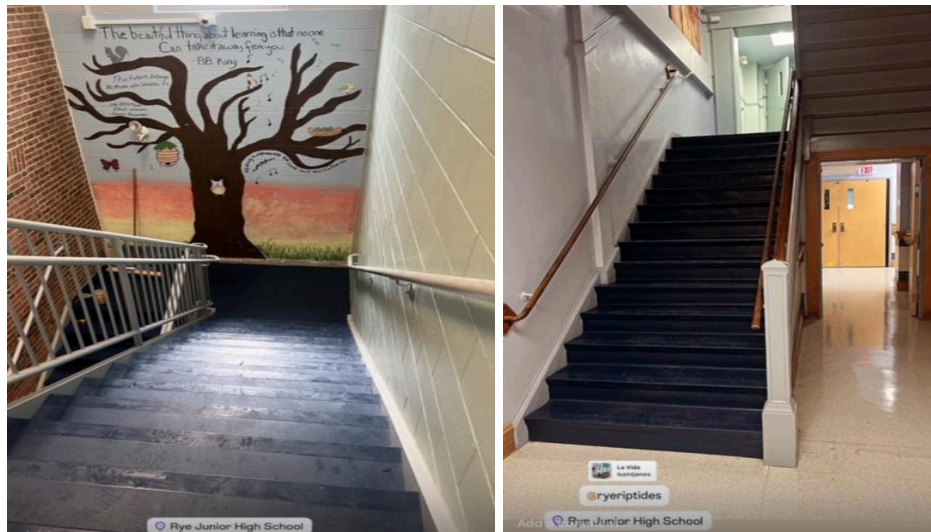
RES playground flashback - what a difference!



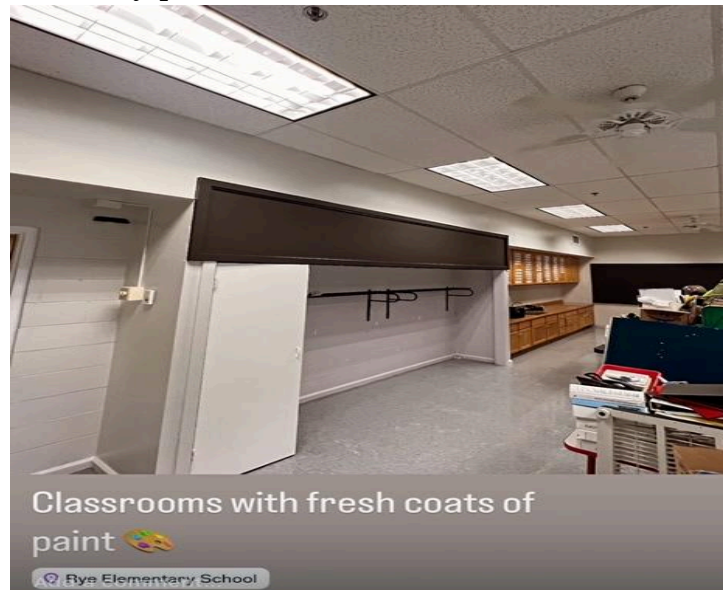
RES and RJH landcare by NELC before school started!



New stair treads at RJH!



Freshly painted classrooms at RES and RJH!



Special shoutout to Commissioner Gordon and Wild Bill!



Other School Project Recent/Future Happenings:

1. **GCS**

- a. Stone school windows replacement for energy efficiency and safety.
- b. Gym floor replacement of rotted wood.
- c. Stone school door replacements for energy efficiency and safety.
- d. Rubber crack fill and sealcoat of parking lot.
- e. HVAC adding mini splits to 1965 wing and conference room.
- f. Seacoast Security JP Series Video Intercom upgrade (coming soon to all schools).

2. **NPS**

- a. Playground/swing upgrade with traditional, ADA compliant and inclusive elements and rubber flooring pathways.
- b. HVAC adding mini splits to 1970's wing school (grades $\frac{3}{4}$ and $\frac{5}{6}$).
- c. New flag pole install project in front of school.
- d. Greenhouse garden goal.
- e. Adding laundry unit to custodial room.
- f. Upgraded gym/cafe ceiling fans.

3. **MHT**

- a. New exterior doors.
- b. Rotten wood trim replacement.
- c. EAB (emerald ash borer) tree treatments.
- d. Playground ladder repairs.
- e. Security upgrades (JP series intercom and new doors).
- f. Deep cleaning of kitchen and kitchen equipment audit.

