

**Superintendent's Report
Rye School Board Meeting
Wednesday, November 20, 2024
5:30 PM**



Agenda Overview

You have the usual approvals of minutes, manifests, transfers and policies. We will also need to vote on the final number for the proposed FY 26 Budget and ratify the negotiated CBA with teachers.

SAU 50 Sensation

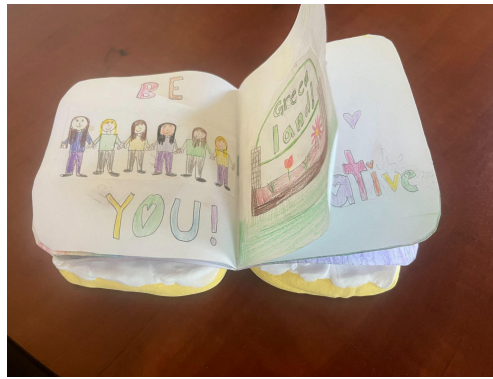
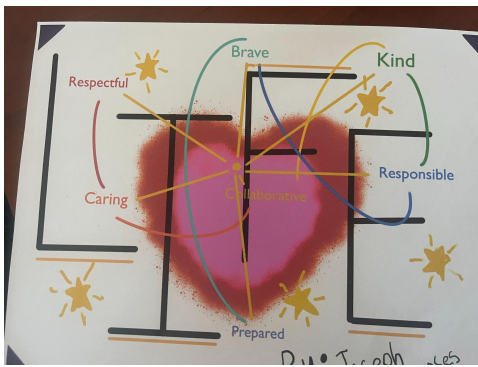
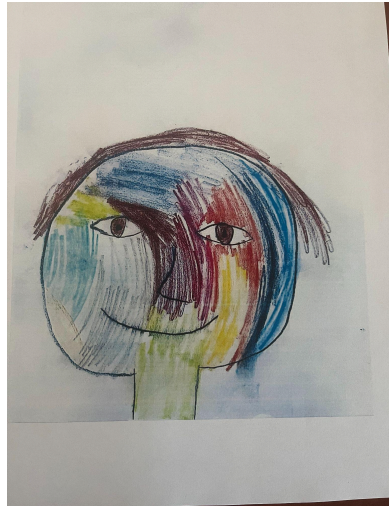
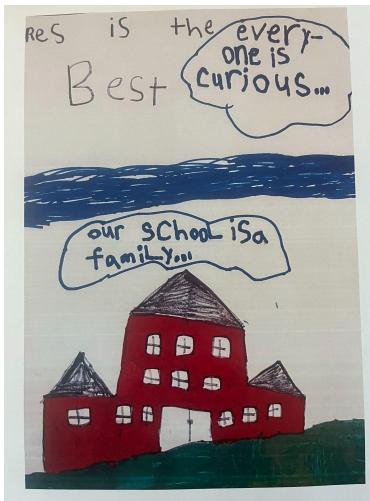
Please find the latest edition of our newsletter [here](#).

Secondary Advisory/AREA

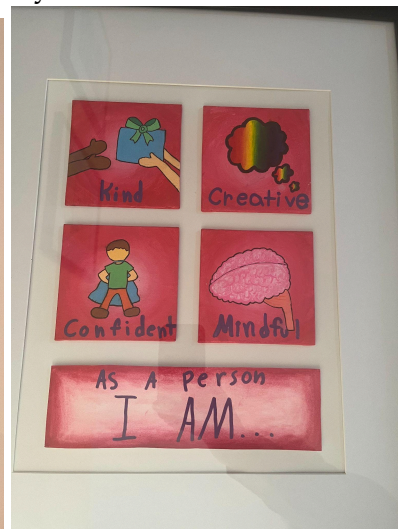
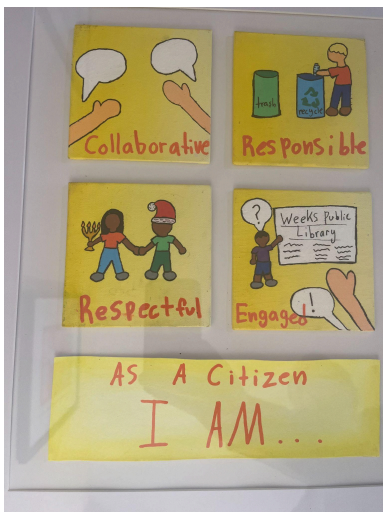
We continue to collaborate with Portsmouth to build strong connections and smooth transitions. Dave and I met with PHS administration last week with a focus on math curriculum and student placement. Dave continues to bring teachers together to focus on curriculum alignment, with a particular focus on Math continuing the Social Studies work from last year.

Strategic Plan/POL Update

We had a number of quality entries in the student competition to create a visual representation for the Portrait of a Learner. Below are some of the pictures....



And congrats to Georgia Westerberg for the winning entry!!!!



Professional Growth Committee

The PGC sent out a survey to gauge interest in PD offerings and potential in-house mini courses. There has been a very positive response and we will be rolling out a menu of offerings with the new Frontline professional growth module.

Proposed Policies

The following policies are up for consideration. To better communicate changes to the policies, Rebecca has created [this summary](#) of the new policies.

2nd Reading/Adoption

DAF: Administration of Federal Grant Funds

EBCH: Chemical Safety and Chemical Hygiene Plan

IGE: Parental Objections to Specific Course Material

IHAM: Health Education and Exemption From Instruction

First Reading

GBGBA/JLCEA/KFD: Use of Automated External Defibrillators

JLF: Reporting Child Abuse or Neglect

JLP: Parental Notification of and Involvement in Student Welfare

2024-2025 Meeting Dates

Tuesday, December 3, 2024 at 4:00 PM at Portsmouth High School (AREA)

Wednesday, December 18, 2024, 5:30 PM at Rye Junior High School

Wednesday, January 15, 2025, 5:30 PM at Rye Junior High School

Wednesday, February 19 2025, 5:30 PM at Rye Junior High School

Tuesday, March 4, 2025 at 4:00 PM at Portsmouth High School (AREA)

Wednesday, March 19 2025, 5:30 PM at Rye Junior High School

Wednesday, March 26, 2025 at 6:30 PM at Greenland Central School (Joint Board)

Wednesday, April 23, 2025, 5:30 PM at Rye Junior High School

Tuesday, May 6, 2025 at 4:00 PM at Portsmouth High School (AREA)

Wednesday, May 14, 2025, 5:30 PM at Rye Junior High School

Wednesday, May 21, 2025 at 6:30 PM at Maude H. Trefethen School (Joint Board)

Wednesday, June 18, 2025, 5:30 PM at Rye Junior High School