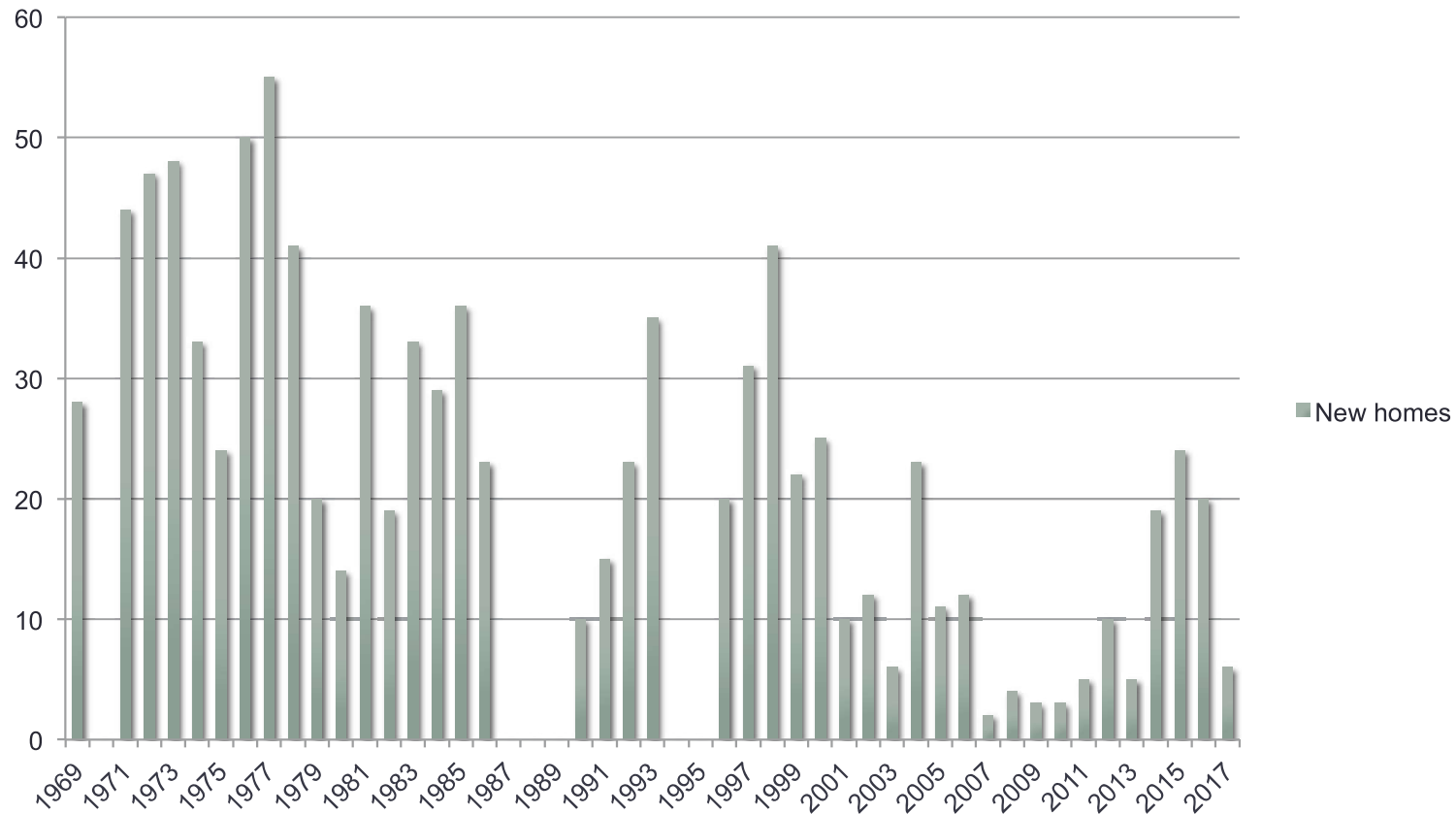


The era of feverish new housing development ended around 2000.

New homes



Source: Building Inspector’s reports in Town annual reports. Data are missing for some years and may not have been consistently reported. Data prior to 2004 may include tear-down/rebuilds. Beginning in 2004, these were broken out and have been excluded. Starting 2012, the graph is based on the “new dwelling units” reported by the Building Inspector, including apartments.