



SCHOOL ADMINISTRATIVE UNIT 50  
Greenland, New Castle, Newington, Rye  
48 Post Road  
Greenland, NH 03840  
603-422-9572  
www.sau50.org

Stephen Zdravec  
Superintendent  
[szdravec@sau50.org](mailto:szdravec@sau50.org)

David Hobbs  
Assistant  
Superintendent  
[dhobbs@sau50.org](mailto:dhobbs@sau50.org)

Susan Penny  
Business Administrator  
[spenny@sau50.org](mailto:spenny@sau50.org)

Stacey Kirby  
Director of Special  
Education  
[skirby@sau50.org](mailto:skirby@sau50.org)

Chris Russo  
Director of Technology  
[crusso@sau50.org](mailto:crusso@sau50.org)

Brian Helfrich  
Director of Facilities  
[brian@sau50.org](mailto:brian@sau50.org)

## **SAU 50 Director of Facilities - Administrator Report** **Brian C. Helfrich - Rye - January 2025**



### **Accomplishments, Successes & Near-Term Projects:**

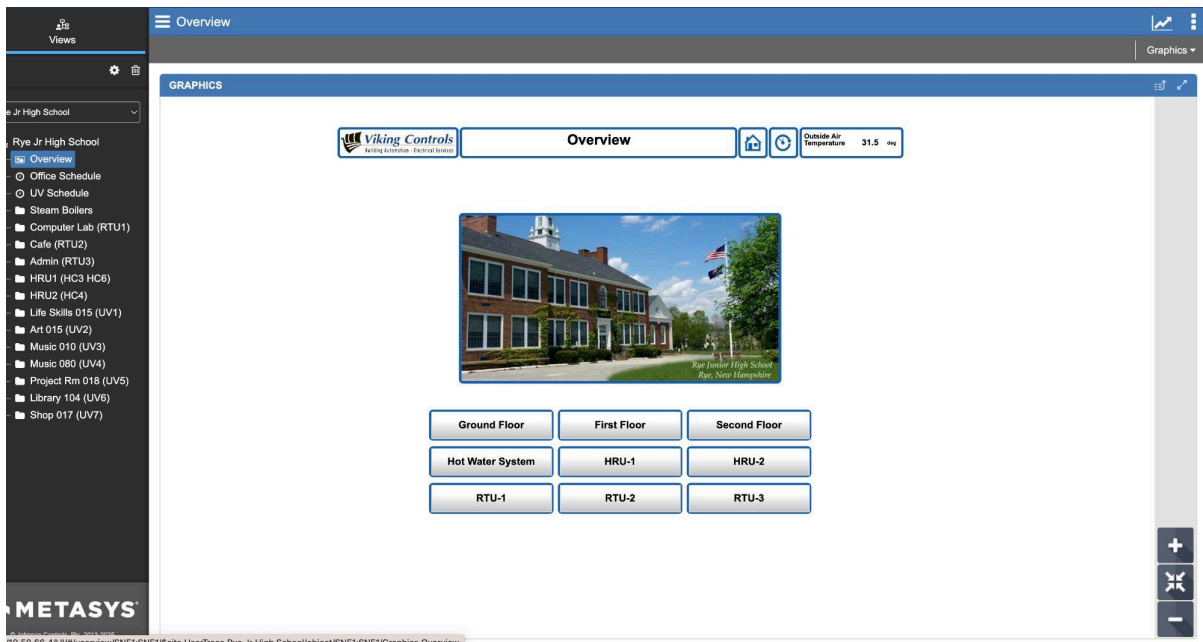
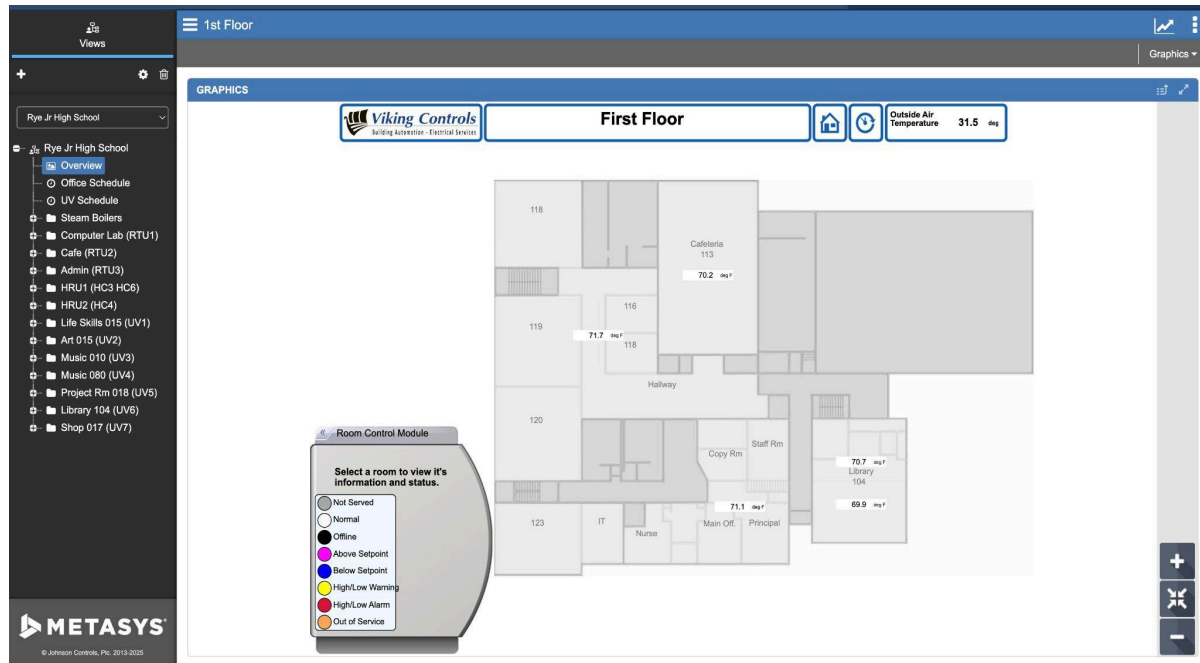
- ★ The past few months have been filled with planning for the new year, closing out the final phases of big projects and fine tuning our CIP and future facility projects. We have both an SAU 50 wide facility useful life planning document as well as our 5 year CIP. The useful life document helps feed our CIP each year. The latest CIP can be found below. As a reminder, this is an ever changing document updated over time.

[x Rye School CIP\\_ 2026-2030.xlsx](#)

- ★ Revision Energy, Rye Community Power and the Rye facilities team completed our final walkthrough of the RES solar system in November. Years of planning and hard work are coming to fruition and will pay dividends for decades to come. This is something we all can and should be very proud of. Thanks to Howard Kalet and Tom Pfau from Rye Community Power and Travis Genatossio from Revision for endless hours of hard work on both our school solar projects.



★ RJH finally has an HVAC control system through Viking Controls that “Commissioner” Jim Gordon and I can monitor remotely. We now have the ability to adjust as needed during unusual weather events and scheduled holidays etc. We are slated to get more in depth training but are both already using the system. This is a huge step for RJH to gain more energy efficiencies in the future.





- ★ I was honored to have Kate Morrison ask me to help her with a math extension project about solar panels which will be featured on the tv's around the school very soon. Having the opportunity to directly make facilities work a small part of the classroom was one of the highlights of my year. Thanks Kate and 5th graders!

***“We SO appreciate the help that both of you gave us, they are still really into the project and are just about done with their slides for the school TVs, and we are going to ask Anne to include their project in one of her upcoming newsletters (they're putting together a paragraph to send her). Our goal is to continue doing these monthly enrichment projects... so you might be hearing from us again! ;)”***

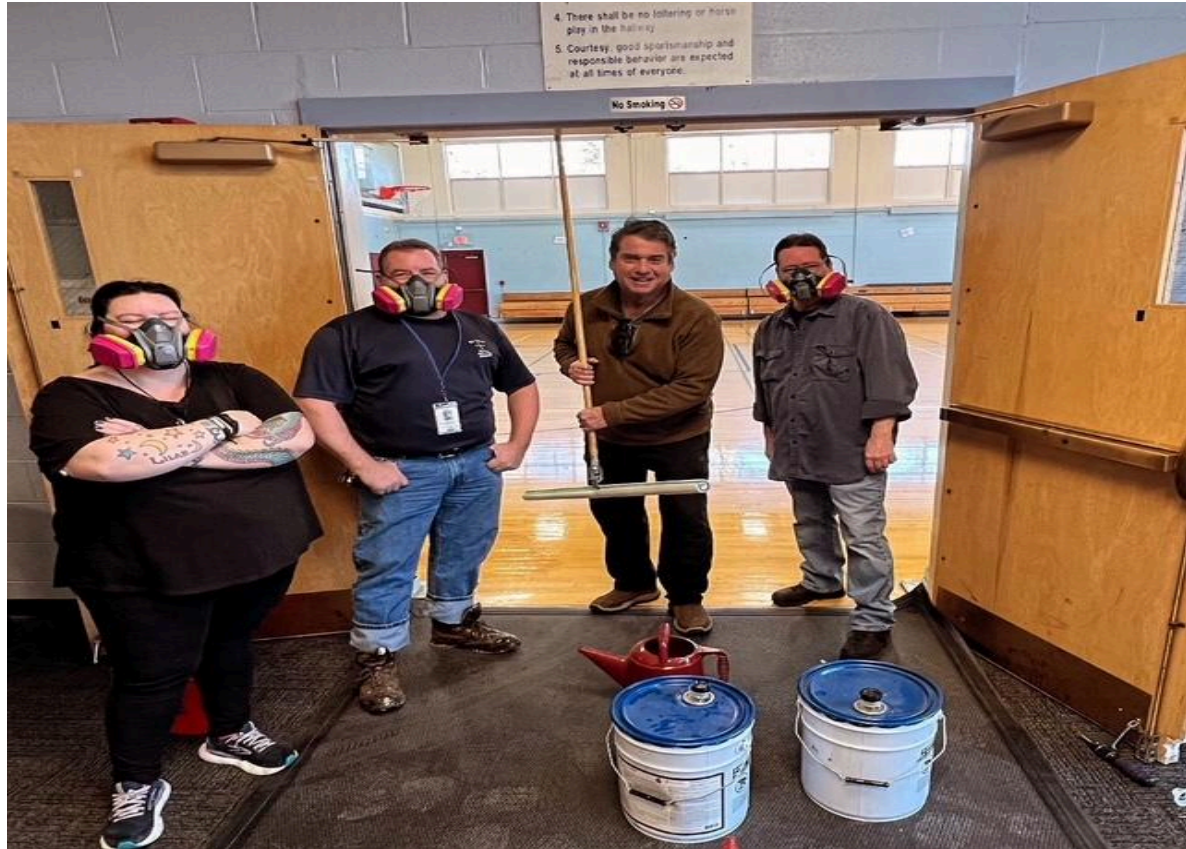


- ★ The RJH gym floor project is one of the most highly anticipated for the 2025 year. I have had several parents and coaches reach out to me with their ideas and expertise in some cases. We all want the same thing, a new floor that is beautiful, solid for various games and benefits our students. To this end, I walked the gym and basement to get a better idea of the subfloor and ways to improve it when we do begin this project. Thanks to Nate Dunn, Pat Quinn and Dave Repczynski for your support and help. This is just the beginning but already we have had another walkthrough with the owners of Danaher flooring who have become our district gym floor company of choice due to their reputation, attention to detail and excellence in school gym floors. They did the

RES gym floor last year and currently are working on the GCS gym floor.



Mike Danaher the owner of Danaher Flooring giving us advice over the break on how to finish the RJH gym floor.



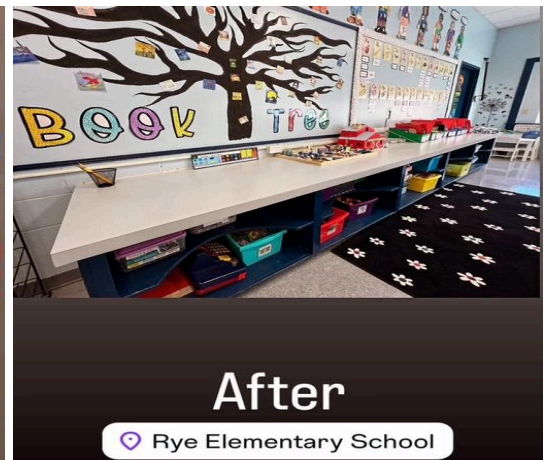


*Various Rye Schools Happenings!*

RJH flashback to 1970!



New countertops at RES!



School hallways!



Helping 3rd Grade at RES!

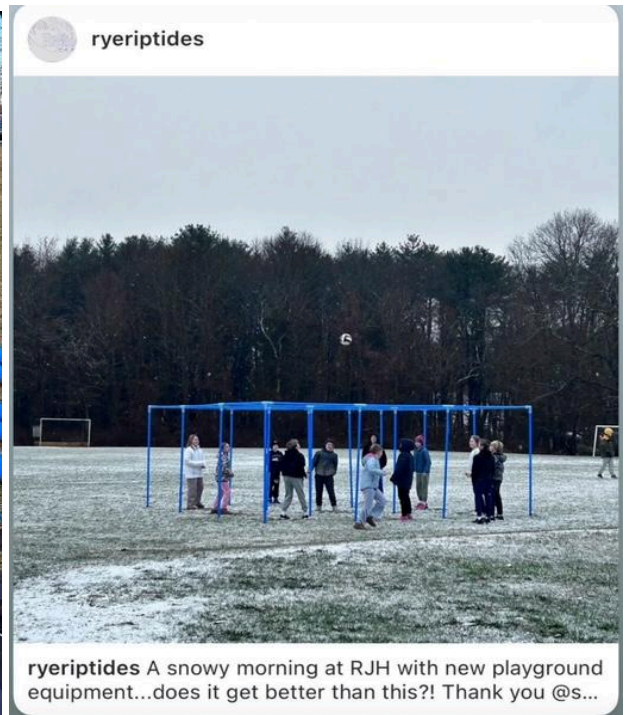




RES softball and baseball fields winter prep!



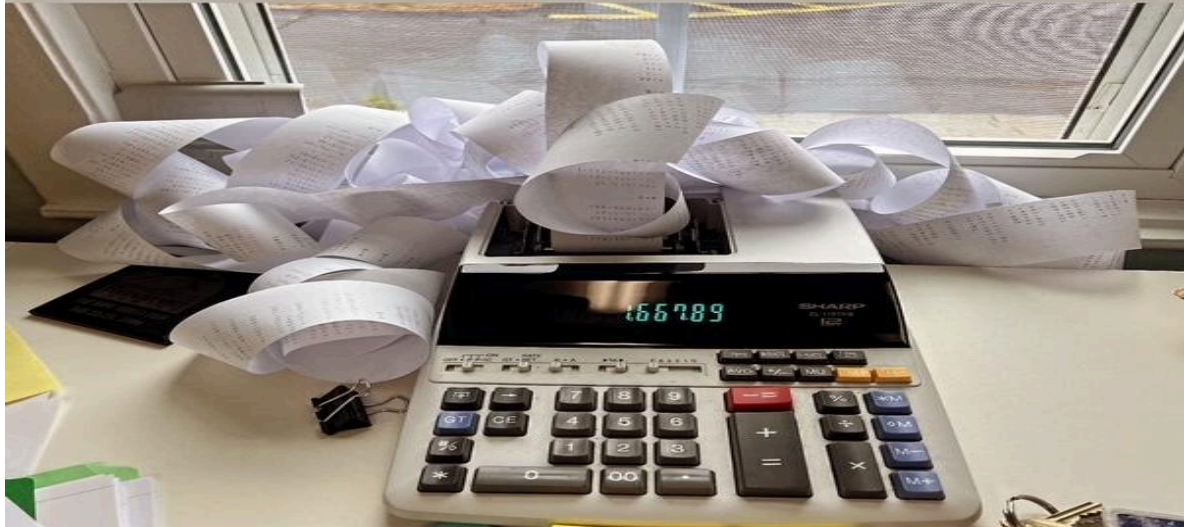
9 square in the air at RJH!





Sue Penny always working for our schools!

It's a busy time of year for the SAU 50 Central Office 🦹‍♂️ 📈 😊



Thanks to Rye DPW for helping cold patch RES!



Thanks Rye DPW 🙌

Commissioner Gordon repair work on exterior shed storage!



**Other School Project Recent/Future Happenings:**

1. **MHT**
  - a. Exterior wood trim replaced with Azek.
  - b. Window repairs.
  - c. Winter ice skating rink.
  - d. Safety committee team created with DHS goals checklist.
  - e. Key cataloging.
  - f. Weatherstripping exterior doors.
  - g. Remote temperature monitoring.
  - h. CIP fine tuning.



## 2. NPS

- a. Playground/swing upgrade with traditional, ADA compliant and inclusive elements and rubber flooring pathways.
- b. Playground committee was formed.
- c. Continued mini splits added to the 1970 wing.
- d. New gas alarm installed.
- e. Increased cleaning company efficiency.
- f. Kitchen repairs.
- g. CIP fine tuning.
- h. Winter ice skating rink (thanks to Chris Russo and Peter Latchaw).

## 3. GCS

- a. Gym floor replacement.
- b. Bleacher replacement.
- c. Targeted spray foam insulation.
- d. Stump removal.
- e. Pressure valve repair.
- f. Mini-splits added.
- g. Stage curtains updated.
- h. HVAC fine-tuning.
- i. 100 year old safe opening and historical document extraction.

